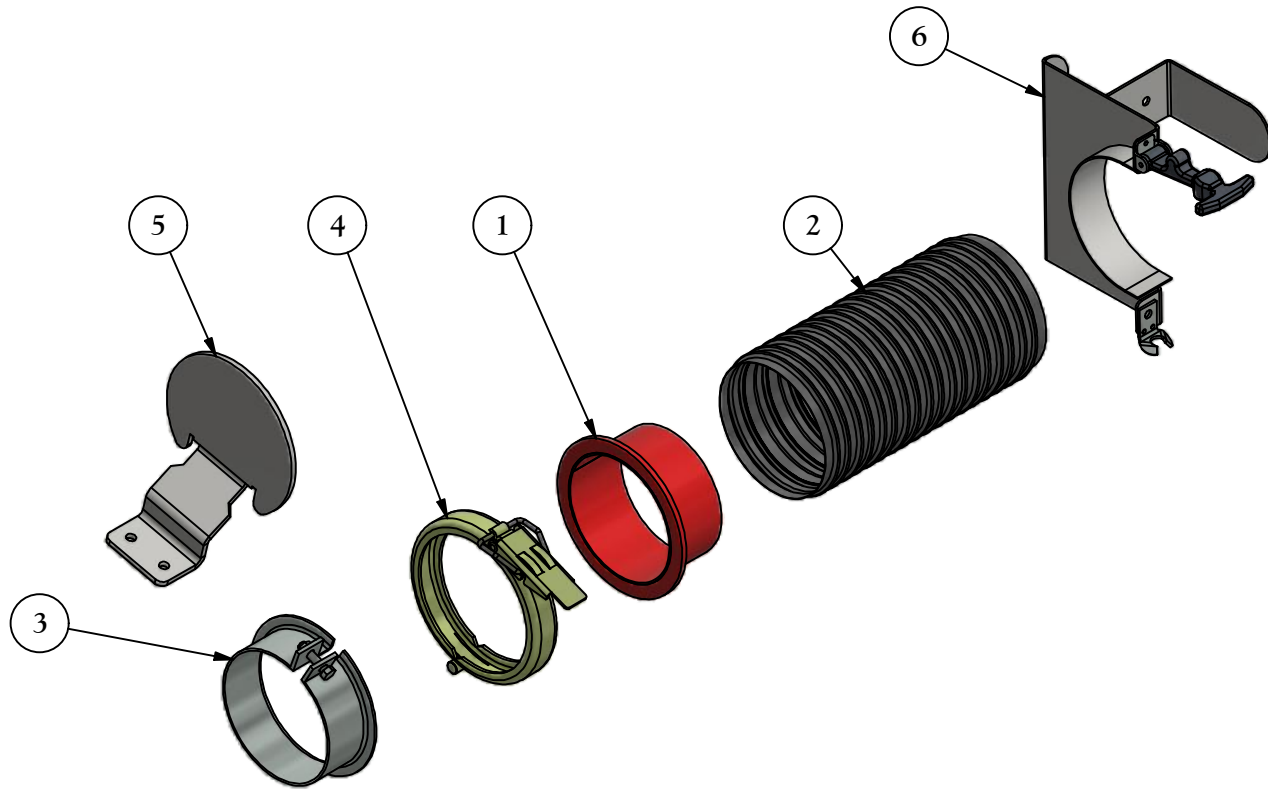


Seed Tender Quick Attach Auger 6" and 7"



6" Auger Parts List

| ITEM | QTY | PART NUMBER | DESCRIPTION |
|------|-----|--------------------|------------------------------|
| 1 | 1 | S5005 | Male Circle Lock (MMSI Part) |
| 2 | 1 | Flex Spout Example | Flex Spout |
| 3 | 1 | S5007 | 6" Bolt On Steel Female Band |
| 4 | 1 | S5006 | 6" Circle Lock Ring Clamp |
| 5 | 1 | S5010 | Mount Bracket |
| 6 | 1 | S5000 | 6" Leg Mount |
| 7 | 5 | B3/8x1.25 | Bolt |
| 8 | 5 | N3/8 | Nut |
| 9 | 5 | W3/8L | Lock Washer |
| 10 | 1 | B1/4x2 | Bolt |
| 11 | 1 | N1/4NYL | Nylock Nut |

7" Auger Parts List

| Item | Qty | Part Number | Description |
|------|-----|--------------------|---------------------------------|
| 1 | 1 | S5505 | 7" Male Circle Lock (MMSI Part) |
| 2 | 1 | Flex Spout Example | Flex Spout |
| 3 | 1 | S5507 | 7" Bolt On Steel Female Band |
| 4 | 1 | S5506 | 7" Circle Lock Ring Clamp |
| 5 | 1 | S5510 | 7" Mount Bracket |
| 6 | 1 | S5509 | 7" Leg Mount |
| 7 | 5 | B3/8x1.25 | Bolt |
| 8 | 5 | N3/8 | Nut |
| 9 | 5 | W3/8L | Lock Washer |
| 10 | 1 | B1/4x2 | Bolt |
| 11 | 1 | N1/4NYL | Nylock Nut |

Patriot Equipment
 1302 K Road Minden, NE
 308-832-0220

This drawing, and the information hereon, are the property of Minden Machine Shop Inc., and may be used only as authorized by us. Unpublished - All rights reserved under the copyright laws.