

PATRIOT™

Bale Feeder **Owner/Operator Manual**



Manufactured by
Minden Machine Shop Inc.
1302 K Road
Minden NE 68959
1-308-832-0220

Table of Contents

Introduction	3
Safety Information	4
Safety Decals	9
Dimensions and Capacities	10
Bolt Torque Table	11
Wheel Attachment and Torque Requirements	12
Setup	16
Towing	16
Operation	16
Service and Maintenance	16
Storage	16
Optional Equipment	17
Parts Diagram	22
Proposition 65	24
Warranty	26

INTRODUCTION

Thank you for purchasing a Patriot Equipment product! We hope you will get many years of productive use from it. The product has been designed to perform a certain function. All product users must read and understand this manual prior to equipment operation. This manual is considered part of your machine and should remain with the machine at all times. Do not allow anyone to operate or maintain this equipment if they have not fully read and comprehended this manual. Failure to follow the recommended procedures may result in personal injury or death or equipment damage.

Information in this manual is designed to help owners and operators to obtain the best results and safe operation from their investment. The life of any machine depends largely on the care it is given and we suggest that the manual should be read and understood and referred to frequently. If for any reason you do not understand the instructions and safety requirements, please contact your authorized dealer. The intent of this manual is to provide guidelines to cover general use and to assist in avoiding accidents and injuries.

There may be times when circumstances occur that are not covered in the manual. At those times it is best to use common sense and contact your authorized dealer or our factory.

The requirements of safety cannot be emphasized enough in this publication. We urge you to make safety your top priority when using and maintaining the equipment. We strongly advise that anyone allowed to operate this equipment be thoroughly trained and tested, to prove they understand the fundamentals of safe operation.

Some photographs, diagrams or illustrations in this manual may show doors, guards and shields opened or removed to aid in clarity and understanding of a particular procedure. All guards, shields and safety devices must be in their proper position prior to operation.

SAFETY AND OPERATION RULES

General Safety Statements

Safety precautions are essential when the use of any mechanical equipment is involved. These precautions are necessary when using, storing, and servicing mechanical equipment. Using this equipment with the respect and caution demanded will considerably lessen the possibilities of personal injury. If safety precautions are overlooked or ignored, personal injury or property damage may occur.

The machine was designed for a specific application. It should not be modified and/or used for any application other than which it was designed. If there are any questions regarding its application, please write or call. Do not use this unit until you have been advised. For more information contact:

Patriot Equipment
1302 K Rd
Minden, NE 68959
308-832-0220

Read this entire manual carefully. Know your equipment. Consider the application, limitations, and the potential hazards specific to your unit. Operator and bystander safety is of prime concern to us. This manual was written with the safety of the operator and others who come in contact with the equipment. This manual was written to help you understand the safe operating procedures of the product. We want you as our partner in safety. A copy of this manual should be available to all persons who may operate this machine.

It is your responsibility as an owner, operator, or supervisor to know what specific requirements, precautions, and work hazards exist and to make these known to all other personnel working with the equipment or in the area, so that they too may take any necessary safety precautions that may be required. Avoid any alterations of the equipment. Such alterations may create a dangerous situation where serious injury or death may occur and will void warranty.

Why is SAFETY important? Three reasons:

1. Accidents disable and kill
2. Accidents cost money
3. Accidents can be avoided

Note the use of the signal words **DANGER**, **WARNING**, and **CAUTION** with safety messages. The appropriate signal word for each message has been selected using the following guidelines:

DANGER: An immediate and specific hazard which will result in severe personal injury or death if proper precautions are not taken.

WARNING: A specific hazard or unsafe practice which could result in severe personal injury or death if proper precautions are not taken.

CAUTION: Unsafe practices which could result in personal injury if proper precautions are not taken or a reminder of good safety practices.

Safety Alert Symbol



BE ALERT! YOUR SAFETY IS INVOLVED!

The Symbol Shown Above Is Used To Call Your Attention To Instructions Concerning Your Personal Safety. Watch for This Symbol - It Points Out Important Safety Precautions. It Means ATTENTION! Become Alert! Your Personal Safety Is Involved! Read The Message That Follows And Be Alert To The Possibility Of Personal Injury Or Death.

Read this manual before operating or working around the equipment! This manual must be delivered with the equipment to its owner and operator. Failure to read this manual and its safety instructions is a misuse of equipment.

Safety Equipment

Please, remember safety equipment provides important protection for persons around a machine that is in operation. **Be sure ALL safety shields and protective devices are installed and properly maintained.** If you find any shields or guards damaged or missing, contact Patriot Equipment for the correct items.

Safety Procedures



1. Use only the correct equipment with the proper capacity when installing or removing the machine.
2. Use correct lifting equipment when filling the bale feeder. Equipment with too little capacity may tip towards the front where the lifted weight is.
3. Do not operate unit without safety shields or guards in place.
4. IMPORTANT: Use caution when transporting. Be alert of the transport unit's overall width when approaching obstacles, such as post sign and poles, along the road. Check the transport width of the unit to ensure clearance before entering.
5. Comply with all safety warnings and cautions in this manual as well as the operator's manuals of any tow vehicles that may be used.
6. Do not allow any riders on the machine when in use.
7. Never allow anyone in the work area when loading the bale feeder. Injury or death could occur.
8. Be sure the bale feeder does not have anyone inside when loading the bale feeder.
9. The bale feeder should be placed and then loaded. NEVER LOAD THE BALE FEEDER AND THEN PLACE, DAMAGE WILL OCCUR.
10. Never walk inside the bale feeder as you can slip or trip and cause injury or death.
11. In case of any defect or awareness of potential danger, please contact Patriot Equipment at 1-800-264-6587 immediately.



Operator Qualifications

Operation of this machine shall be limited to competent and experienced persons. In addition anyone who will operate or work around the machine must use good common sense. In order to be qualified, they must also know and meet all other requirements, such as:

1. Some regulations specify that no one under the age of 18 may operate power machinery. It is your responsibility to know what these regulations are in your own area or situation.
2. Current Occupational Safety Health Administration regulations state in part: "At the time of initial assignment and at least annually thereafter, the employer shall instruct every employee or user in the safe operation and servicing of all equipment with which the employee or user is, or will be involved."
3. Unqualified persons are to stay out of the work area.
4. A person who has not read and understood all operating and safety instruction is not qualified to operate the machine.

Safety Overview

YOU are responsible for SAFE operation and maintenance of the machine. YOU must ensure that you and anyone who is going to operate and maintain or work around the machine must be familiar with the operating, maintenance, and safety information contained in the manual.

Remember YOU are the key to safety. GOOD PRACTICES protect not only you but also the people around you. Make these practices a working part of your safety program. Be certain EVERYONE operating this machine is familiar with the procedures recommended and follows safety precautions. Remember, most accidents can be prevented. Do not risk injury or death by ignoring any information addressed.

Machine owners must give operating instructions to operators before allowing them to operate the machine. They must be reviewed at least annually thereafter per OSHA regulation 1928.57.

The most important safety device on the equipment is a SAFE OPERATOR. It is the operator's responsibility to read and understand ALL instructions in the manual and to follow them. All accidents can be avoided!

Any person who has not read and understood all operation and safety instructions is not qualified to operate the machine. An untrained operator exposes himself and bystanders to possible serious injury or death.

Do not modify the equipment in any way. Unauthorized modifications may impair the functions and/or safety and could affect the life of the equipment.

Safety Affirmation

1. I have read and understand the operator's manual and all safety signs before operation, maintenance, adjusting, or unplugging the machine.
2. I will allow only trained persons to operate the machine. *An untrained operator is not qualified to operate this equipment.
3. I have access to a fire extinguisher.
4. I have all guards in place and will not operate the machine without them.
5. I will not allow riders on the machine.
6. I understand the danger of moving parts (rotating parts, hydraulics, and pinch points) and will stop engine before servicing.
7. I recognize the danger of the machine coming in contact with power lines.
8. I have the safety lock up pins and know and understand where and when to use them.
9. I understand that any accidents that occur with the machine are my responsibilities.
10. I understand that Patriot Equipment will not be held responsible for any accidents that involve the machine.

Sign Off Sheet

(This sheet should be signed annually as part of your safety program)

As a requirement of OSHA, it is necessary for the owner/employer to train the employee in the safe operation and safety procedures with this machine. We include this sign off sheet for your convenience and personal record keeping.

DATE	EMPLOYER SIGNATURE	EMPLOYEE SIGNATURE

Machine Inspection

After delivery of your new machine and/or completion of assembly, and before each use, inspection of the machine is mandatory. This inspection should include, but not be limited to:

1. Check to see that all guards are in place, secured and functional.
2. That all fasteners are tight.
3. All hubs and tires are secure.
4. Towing hitch is in working order.

Lighting and Marking

It is the responsibility of the customer to know the lighting and marking requirements of the local highway authorities and to install and maintain the equipment to provide compliance with the regulations. Add extra lights when transporting at night or during periods of limited visibility if necessary.

Serial Number

To ensure efficient and prompt service, please furnish us with the model and serial number of the machine in all correspondence or other contact. The serial number is located on a visible location of the machine.

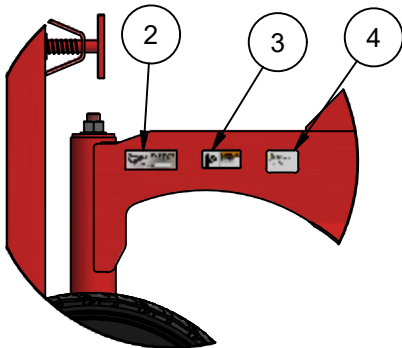
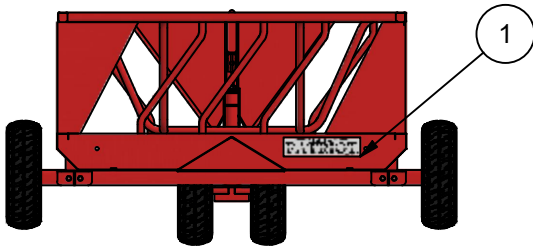
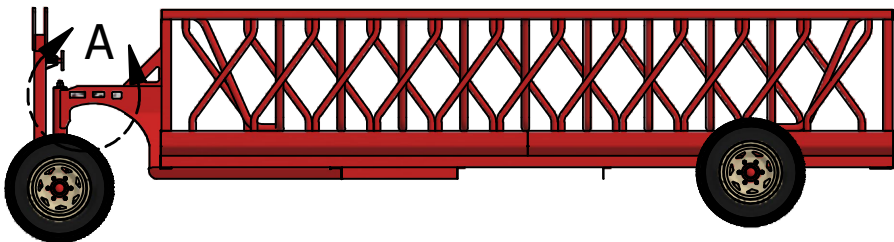
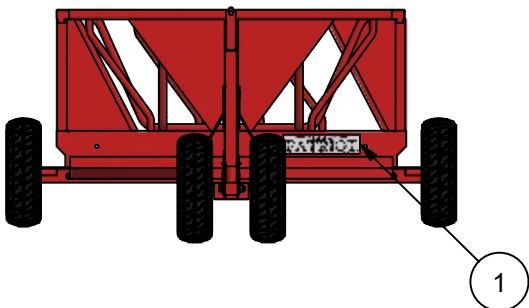
Safety Decals

1. Keep safety decals clear and legible at all times.
2. Replace decals and signs that are missing or have become unreadable.
3. Safety signs are available from your Dealer or the Manufacturer.

How to install Safety Decals

1. Be sure that the installation area is clean and dry.
2. Decide on the exact position before you remove the backing paper.
3. Align the decal over the specified area and carefully press the small portion with the exposed sticky backing in place.
4. Slowly peel back the remaining paper and carefully smooth the remaining portion of the decal in place.
5. Small air pockets can be pierced with a pin and smoothed out using a piece of decal backing paper.

Decals



DETAIL A
SCALE 1/15



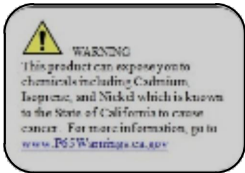
TS2001



TS2003



TS2017



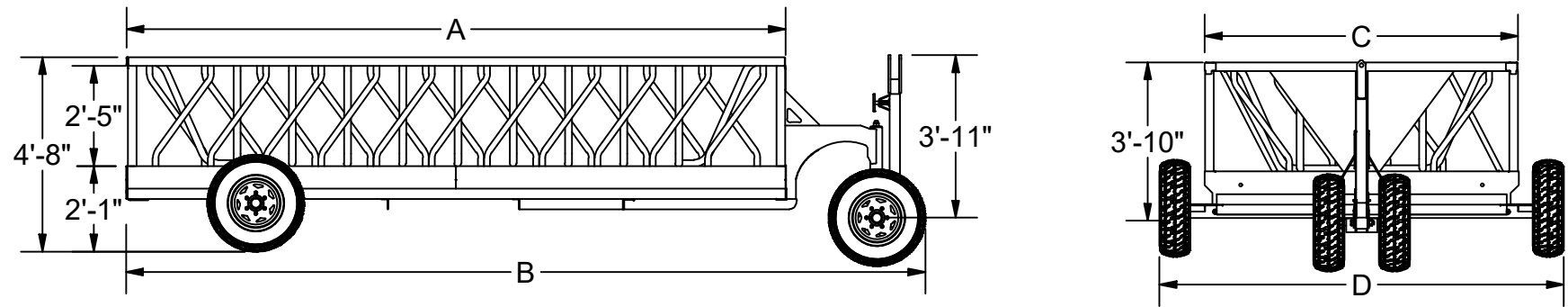
TS2018

Parts List			
ITEM	QTY	PART NUMBER	DESCRIPTION
1	2	TS2001 White	5x20 Patriot Decal White
2	1	TS2003	Serial Number Decal
3	1	TS2017	Read Manual Before Use
4	1	TS2018	P65 Warning

Patriot Equipment
1302 K Road Minden, NE
308-832-0220

This drawing, and the information hereon, are the property of Minden Machine Shop Inc., and may be used only as authorized by us. Unpublished - All rights reserved under the copyright laws.

Dimensions and Capacities



H-Class Bale Feeder								
Length	# of Stalls	# of Axles	# of Bales	Capacity	Dim. A	Dim. B	Dim. C	Dim. D
12'	24	1	1-2	7 Ton	12'	15'5"	7'7"	9'9"
16'	30	1	2-3	7 Ton	16'	19'5"	7'7"	9'9"
20'	37	1	3-4	7 Ton	20'	23'5"	7'7"	9'9"
24'	43	2	4-5	10 Ton	24'	27'5"	7'7"	9'9"
32'	55	2	5-6	10 Ton	32'	35'5"	7'7"	9'9"
40'	67	3	6-7	10 Ton	40'	43'5"	7'7"	9'9"

E-Class Bale Feeder								
Length	# of Stalls	# of Axles	# of Bales	Capacity	Dim. A	Dim. B	Dim. C	Dim. D
12'	17	1	1-2	7 Ton	12'	15'5"	6'2"	8'7"
16'	21	1	2-3	7 Ton	16'	19'5"	6'2"	8'7"
20'	26	1	3-4	7 Ton	20'	23'5"	6'2"	8'7"
24'	31	1	4-5	7 Ton	24'	27'5"	6'2"	8'7"
32'	40	2	5-6	10 Ton	32'	35'5"	6'2"	8'7"
40'	49	2	6-7	10 Ton	40'	43'5"	6'2"	8'7"

Torque Data for Standard Nuts, Bolts, and Capscrews

Tighten all bolts to torques specified in chart unless otherwise noted. Check tightness of bolts periodically, using bolt chart as guide. Replace hardware with same grade bolt.

Note: Unless otherwise specified, high-strength Grade 5 hex bolts are used throughout assembly of equipment.

Bolt Torque for Standard Bolts

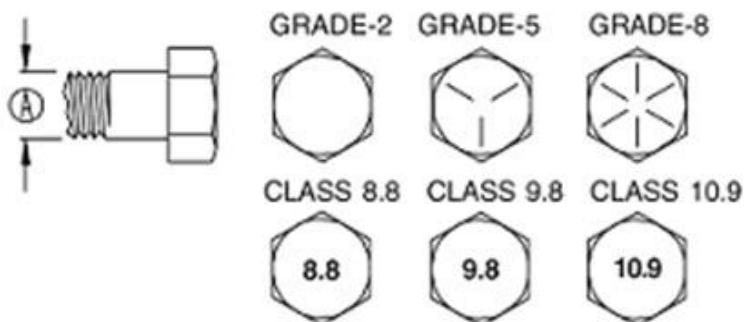
Bolt Size A	Grade 2		Grade 5		Grade 8	
	lb-ft	(N.m)	lb-ft	(N.m)	lb-ft	(N.m)
1/4"	6	8	9	12	12	16
5/16"	10	13	18	25	25	35
3/8"	20	27	30	40	45	60
7/16"	30	40	50	70	80	110
1/2"	45	60	75	100	115	155
9/16"	70	95	115	155	165	220
5/8"	95	130	150	200	225	300
3/4"	165	225	290	390	400	540
7/8"	170	230	420	570	650	880
1"	225	300	630	850	970	1310

Torque figures indicated are valid for non-greased or non-oiled threads and heads unless otherwise specified. Therefore, do not grease or oil bolts or capscrews unless otherwise specified in this manual. When using locking elements, increase torque values by 5%.

Bolt Torque for Metric Bolts

Bolt Size A	Class 8.8		Class 9.8		Class 10.9	
	lb-ft	(N.m)	lb-ft	(N.m)	lb-ft	(N.m)
6	9	13	10	14	13	17
7	15	21	18	24	21	29
8	23	31	25	34	31	42
10	45	61	50	68	61	83
12	78	106	88	118	106	144
14	125	169	140	189	170	230
16	194	263	216	293	263	357
18	268	363	364	493
20	378	513	515	689
22	516	699	702	952
24	654	886	890	1206

Grade or Class value for bolts and capscrews are identified by their head markings.



Wheel Attachment and Torque Requirements

Patriot Equipment would like to reiterate the extreme importance of properly matching your axles, wheels, and tires when specifying or replacing your trailer wheels. It is of equal importance that you apply and maintain proper wheel mounting torque on your trailer axle. Please follow the wheel selection, torque requirement, and torque sequence guidelines that follow.

Wheel Selection

Wheels are a very important and critical component of your running gear system. When specifying or replacing your trailer wheels it is important that the wheels, tires, and axle are properly matched. The following characteristics are extremely important and should be thoroughly checked when replacement wheels are considered.

1. **Bolt Circle:** Many bolt circle dimensions are available and some vary by so little that it might be possible to attach an improper wheel that does not match the axle hub. Be sure to match your wheel to the axle hub, bolts circle, hub pilot and wheel mount surface to hub face. Also, confirm that proper studs stick out.
2. **Capacity:** Make sure that the wheels have enough load carrying capacity and pressure rating to match the maximum load of the axle tire and trailer.
3. **Offset:** This refers to the relationship of the center line of the tire to the hub face of the axle. Care should be taken to match any replacement wheel with the same offset wheel as originally equipped. Failure to match offset can result in reducing the load carrying capacity of your axle.
4. **Rim Contour.**



CAUTION

Replacement tires must meet the same specifications as the originals. Mismatched tires and rims may come apart with explosive force and cause personal injury to yourself and others. Mismatched tires and rims can also blow out and cause you to lose control and have an accident which can result in serious injury or death.



CAUTION

Do not attempt to repair or modify a wheel. Even minor modifications can have a great effect. Do not install a tube to correct a leak through the rim. If the rim is cracked, the air pressure in the tube may cause the pieces of the rim to explode with great force and can cause serious injury or death.

Torque Requirements

You should always consult with the wheel manufacturer to determine the appropriate torque level for your wheels. It is extremely important to apply and maintain proper wheel mounting torque on your trailer axle. Torque is a measure of the amount of tightening applied to a fastener (nut or bolt) and is expressed as length times force. For example, a force of 90 pounds applied at the end of a wrench one foot long will yield 90 Ft Lbs. of torque. Torque wrenches are the proper method to ensure torque is applied correctly to a fastener.



CAUTION

Wheel nuts or bolts must be tightened and maintained at the proper torque levels to prevent loose wheels, broken studs, and possible dangerous separation of wheels from your axle, which can lead to an accident, personal injuries or death.

Be sure to use only the fasteners matched to the cone angle of your wheel (usually 60 degrees or 90 degrees). The proper procedure for attaching your wheels is as follows:

1. Start all nuts/bolts by hand to prevent cross threading.
2. The tightening should be done in stages;
 - a. Initially snug (10 ft-lb) the nuts/bolts to align and seat the wheel to the hub, in the order described in the torque sequence diagram below.
 - b. Tighten the nuts/bolts performing the wheel torque sequence below.
3. Wheel nuts/bolts should be torqued before first road use and after each wheel removal. Check and re-torque after the first 10 miles, 25 miles and again at 50 miles. Check periodically thereafter, THIS IS VERY IMPORTANT.
4. Wheel nuts are designed to have full thread engagement with the wheel stud. Wheel stud threads should be visible outside the wheel nut. There will be varying amounts of thread stick out depending on variables such as center disc thickness and nut thickness. In general, there should be approximately three threads visible past the end of the nut.

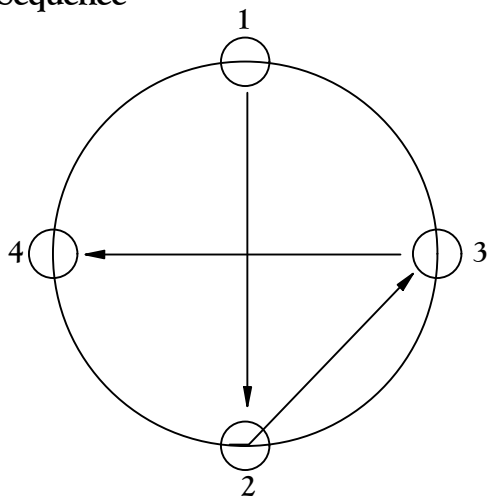
Wheel Attachment and Torque Requirements

Wheel Installation Torque Sequence (Ft. Lbs.)					
Wheel Size	Stud Size	1st Stage	2nd Stage	Final Torque	Cone Nut Degree
12" - 440 BC	1/2"-20	20-25	35-40	60-75	60 Degree Cone Nut
12" - 545 BC	1/2"-20	20-25	35-40	60-75	60 Degree Cone Nut
13" - 440 BC	1/2"-20	20-25	35-40	60-75	60 Degree Cone Nut
13" - 545 BC	1/2"-20	20-25	35-40	60-75	60 Degree Cone Nut
14" - 545 BC	1/2"-20	20-25	50-60	100-120	60 Degree Cone Nut
15" - 545 BC	1/2"-20	20-25	50-60	100-120	60 Degree Cone Nut
15" - 655 BC	1/2"-20	20-25	50-60	100-120	60 Degree Cone Nut
16" - 655 BC	1/2"-20	20-25	50-60	100-120	60 Degree Cone Nut
16" - 865 BC	9/16"-18	20-25	50-60	140-170	60 Degree Cone Nut
16.5" - 655 BC	1/2"-20	20-25	50-60	100-120	60 Degree Cone Nut
16.5" - 865 BC	9/16"-18	20-25	50-60	140-170	60 Degree Cone Nut
16.5" x 9.75" 865 BC	5/8"-18	50-60	120-125	175-225	Special Stud Piloted with 90 degree Cone Nuts
17.5" Hub Pilot 865 BC	5/8"-18	50-60	100-120	190-210	Hub piloted with clamp ring. 90 degree cone nuts and greased threads.
17.5" Hub Pilot 865 BC	5/8"-18	50-60	90-200	275-325	Hub piloted with flange nut
17.5" Hub Pilot 865 BC	5/8"-18	50-60	60-110	150-175	Hub piloted with swivel flange nut

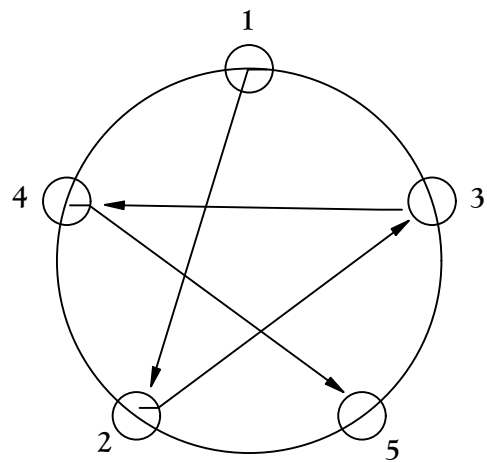
Medium and Heavy Duty Torque Requirements (Ft. Lbs.)				
Description	Part Number	Application	Torque Min. Ft. Lbs.	Torque Max. Ft. Lbs
5/8-19 90 degree Cone	006-109-00	Clamp Ring 033-052-01	190	210 Grease Threads
3/4-10 Hex Nut	006-117-00	Demountable Rim Clamp	210	260
3/4-16 Spherical Nut	006-064-01, 02	Single Wheel	450	500
	006-069-01, 02	Inner Dual	450	500
1-1/8 - 16 Spherical Nut	006-070-01, 02	Outer Dual	450	500
5/8-18 Non-swiveling Flange Nut	006-058-00	Wheels	275	325
5/8-18 Swiveling Flange Nut	006-209-00	Wheels	150	175
M22-1.5	006-118-00	Swiveling Flange Nut	450	500

Minden Machine Shop Inc.
1302 K Road Minden, NE
800-264-6587 / 308-832-0220

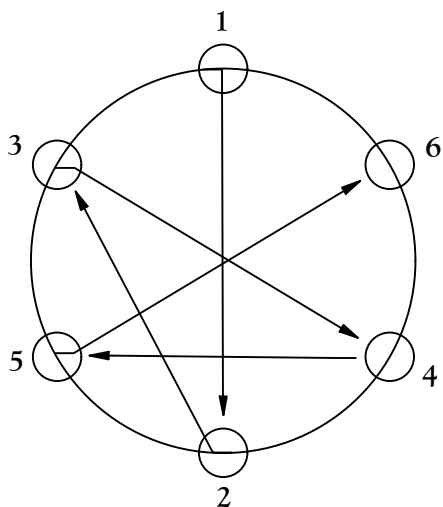
Torque Sequence



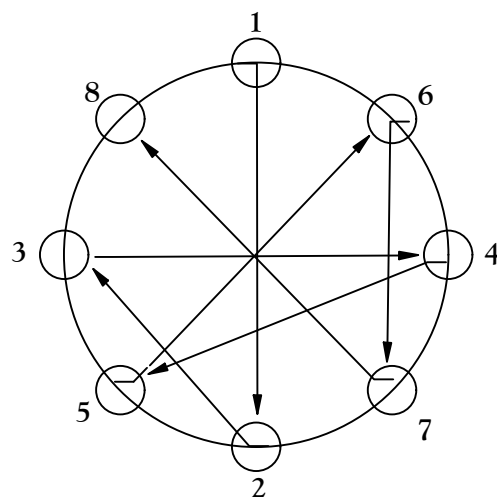
4 Bolt



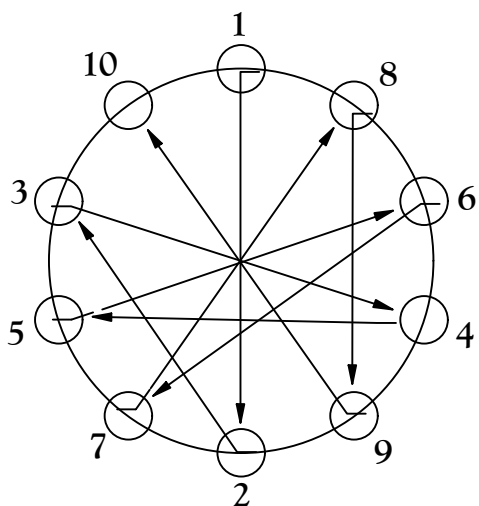
5 Bolt



6 Bolt



8 Bolt



10 Bolt

Setup

The Bale Feeder is easy to be setup for use. Upon arrival, the Bale Feeder may need to have the tires placed on it as they have been removed for shipping purposes. Place the tires back on the axles and install the lug nuts. Torque the lug nuts to the correct amount. Please see the included table for correct torque.

Once the tires are correctly installed on the Bale Feeder, the Bale Feeder is ready for use.

Towing

The Bale Feeder is designed to be towed only when it is empty. Maximum speed for the Bale Feeder is 25 miles per hour. The Bale Feeder has an extendable hitch to aid in attaching to a tow vehicle. If the hitch is extended, be sure to travel in a reversed direction and travel far enough so that the hitch's spring loaded retaining pin will "click" back in place and secure the front hitch for towing.

Check the local laws and regulations for towing the Bale Feeder to its location. Turns will have to be wider to accommodate the length of the Bale Feeder so that it can properly clear corners and obstructions. Some local laws may require lights to be used if the Bale Feeder is to be towed down the roadways.

Operation

The Bale Feeder is designed to be moved only when it is empty. Place the Bale Feeder in the desired location and then fill the Bale Feeder. See the chart for the capacity of the Bale Feeder that is being used. When operations for the Bale Feeder have ended, empty the Bale Feeder and move it to a desired location for storage.

Service/Maintenance

To maximize the service life of the Bale Feeder, it should be cleaned out when feeding operations have ended. The wheel bearings need to be inspected and repacked with grease annually.

Storage

When feeding operations have ended, the Bale Feeder needs to be cleaned out to maximize service life. Feed that is left in the Bale Feeder will collect moisture which can lead to a decreased service life of the machine. Store the Bale Feeder in an area where it can't roll down hill and where it can't be damaged or played on. Please keep anyone from entering or being on the Bale Feeder as injury or death could occur.

Optional Equipment

Installation of Bale Feeder Liner in All Models

Orientation is facing the bale feeder from the hitch end

Please refer to diagram when using these directions

1. Place the liner on top of the rungs of the bale feeder. The liner should be placed so the smooth black side of the material will face towards the inside of the bale feeder.



WARNING

Use two or more people to lift the liner roll. Failure to do so may result in back or other injury.

2. The installation of the liner is easier if it is done from the inside of the bale feeder. Make sure bale feeder is clean and safe to enter. Use a ladder to enter the bale feeder.



WARNING

When using a ladder, check that it is safe to use and has a solid base to be placed on. Falling from a ladder may result in an injury. Be aware as you move inside the bale feeder. The rungs can cause you to trip and fall which could result in an injury.

3. To begin, place the liner in the right front corner of the bale feeder. Make sure the smooth black side of the liner is to the inside (feed side) of the bale feeder. You will be installing the liner in a counter clockwise direction around the bale feeder and all four corners will have a clamp on them.



CAUTION

Be aware as you move inside the bale feeder. The rungs can cause you to trip and fall which could result in an injury.

4. Locate the first rung of the bale feeder on the right side. The liner needs to be placed in the front right corner of the bale feeder, as this will be where you will be connecting the seam when you are finished.
5. Place liner even with the outside of the top frame tube.
6. Measure 3-1/2" to 4" from the liner edge and drill two 7/16" diameter holes on either side of the rung so that the rung is centered between the holes. Holes need to be drilled to fit the width of the 2" muffler clamp.



WARNING

Be aware when drilling the holes through the liner. The drill bit could come in contact with body parts and cause a serious injury. Make sure all body parts are out of the way when drilling holes.

7. Place the muffler clamp through the holes and fasten the bottom of the muffler clamp around the bottom of the rung. Use the 3/8" flange nuts and tighten the muffler clamp with a 9/16" wrench or ratchet with 9/16" socket.

8. Proceed down the right side of the bale feeder, skip two rungs and repeat steps 5-7. Repeat until you come close to the end of the feeder.



CAUTION

Be aware as you move inside the bale feeder. The rungs can cause you to trip and fall which could result in an injury.

9. After you have placed the second to final muffler clamp on the side, it may be necessary to skip one rung and repeat steps 5-7.



CAUTION

Be aware as you move inside the bale feeder. The rungs can cause you to trip and fall which could result in an injury.

10. You should now have the right side clamps installed. Please note: you should have one clamp on the front right corner and one clamp on the rear right corner rungs.



CAUTION

Be aware as you move inside the bale feeder. The rungs can cause you to trip and fall which could result in an injury.

11. Route the liner the best you can around the corner. Repeat steps 5-7 on the two rear rungs of the bale feeder.

12. Route the liner the best you can around the corner. The left side clamp placement of the bale feeder will need to match the right side clamp placement of the bale feeder. Be sure the corner rung has a clamp on it.

13. Repeat steps 5-7 as you locate the rungs.



CAUTION

Be aware as you move inside the bale feeder. The rungs can cause you to trip and fall which could result in an injury.

14. Route the liner the best you can around the corner. Repeat steps 5-7 on the front rungs.

15. When installed correctly, there should be clamps on all corner rungs of the bale feeder.

16. Once finished with the clamps, you are now ready to fasten the seam of the liner.

17. You should have enough material to overlap the liner on the right front corner area.

18. Drill 3, 7/16" diameter holes, one hole 1-1/2" from the top, a second 1-1/2" from the bottom and the third in the center of the other two. You will want to install the 3/8" x 1" hex bolts as you drill the holes. Install the 3/8" hex bolts with a flat washer on each side of the liner and install the lock nut. Install all bolts and tighten when finished using the 9/16" end wrench and the ratchet with a 9/16" socket.



WARNING

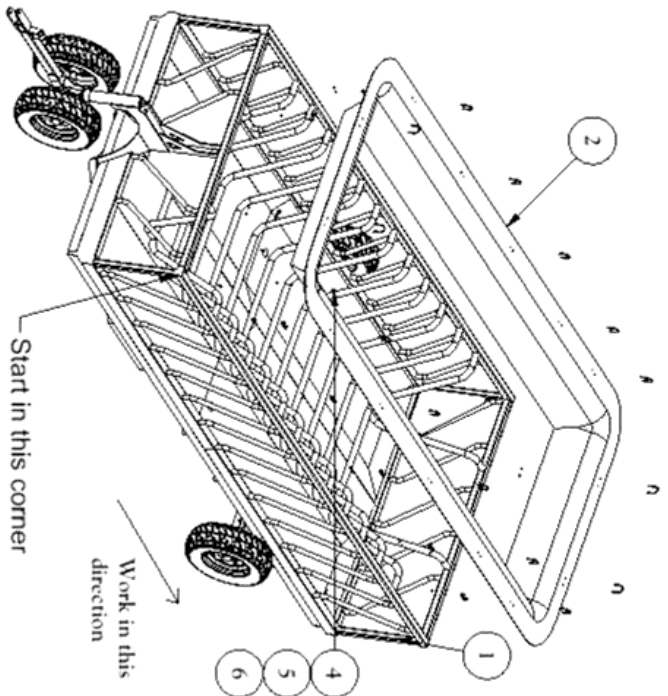
Be aware when drilling the holes through the liner. The drill bit could come in contact with body parts and cause a serious injury. Make sure all body parts are out of the way when drilling holes.

19. Congratulations! The installation of the liner into the bale feeder is complete.

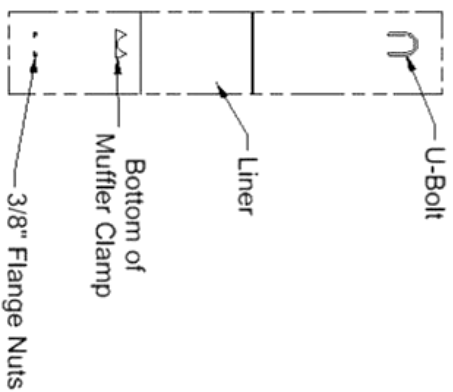
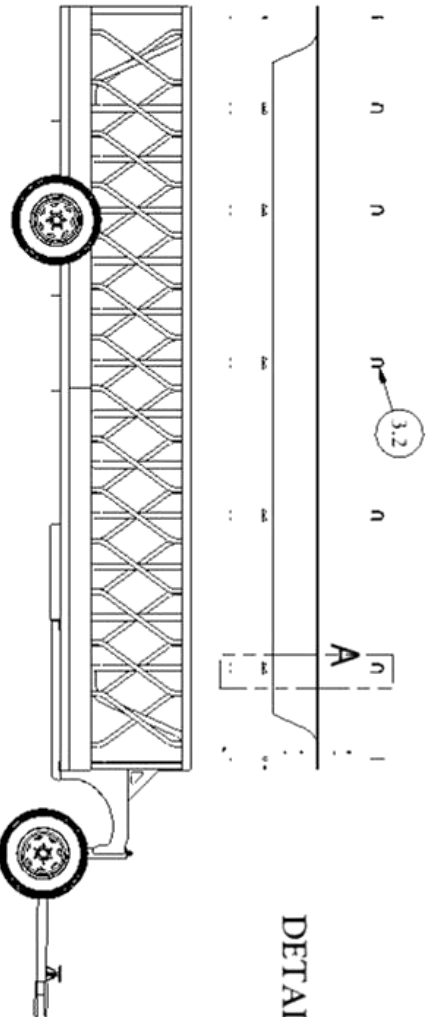
INSTALLATION INSTRUCTIONS FOR BALE FEEDER LINER

Parts List

ITEM	QTY	PART NUMBER	DESCRIPTION
1	1	Bale Feeder w/ Trolley Front	
4	1	BR1020	16' Bale Feeder Liner
2	1	BF1021	20' Bale Feeder Liner
2.2	1	BF1022	24' Bale Feeder Liner
2.4	1	BF1023	32' Bale Feeder Liner
2.6	1	BF1024	40' Bale Feeder Liner
3	12	Muffler Clamp Assembly	16' Bale Feeder
3.2	14	Muffler Clamp Assembly	20' Bale Feeder
3.4	18	Muffler Clamp Assembly	24' Bale Feeder
3.6	20	Muffler Clamp Assembly	32' Bale Feeder
3.8	24	Muffler Clamp Assembly	40' Bale Feeder
4	3	Hex Bolt	3/8" - 16 x 1" Hex Bolt UNC
5	6	Flat Washer	3/8" Flat Washer
6	3	Center Lock Nut	3/8" - 16 Hex Nut Center Lock UNC



DETAIL A

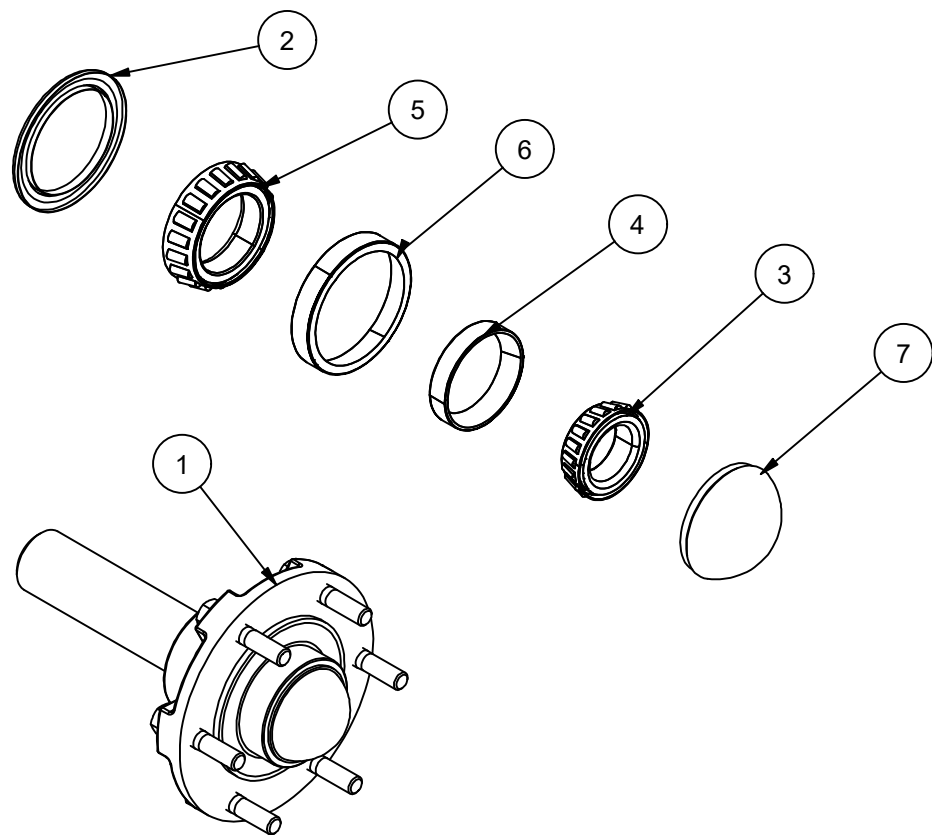


Minden Machine Shop Inc.
1302 K Road Minden, NE
800-264-6587 / 308-832-0220



Parts Diagrams

Hub, Spindle and Bearings



Parts List			
ITEM	QTY	PART NUMBER	DESCRIPTION
1	1	SPD888-10.5	Complete Hub and Spindle
2	1	16289	Seal
3	1	LM67048	Outer Cone (Bearing)
4	1	LM67010	Outer Cup
5	1	JL69349	Inner Cone (Bearing)
6	1	JL69310	Inner Cup
7	1	SPD888-4	Dust Cap
8	1	SPD888-5	Spindle
9	1	SPD888-6	Hub
10	1	SPD888-7	Castle Nut
11	1	SPD888-9	Washer

California Proposition 65

The Safe Drinking Water and Toxic Enforcement Act of 1986 (California Proposition 65, commonly known as Prop 65) applies to companies doing business in the State of California. The regulation is administered by the Office of Environmental Health Hazard Assessment (OEHHA) and mandates that no person in the course of doing business shall knowingly expose any individual to a chemical known to the State of California to cause cancer and/or reproductive toxicity without first giving clear and reasonable warning to individuals. If the business can prove that the exposure level poses no significant risk to the end consumer no warning is necessary.

Minden Machine Shop, Inc. is providing the information below to educate about the chemicals that are or could be found in the products that Minden Machine Shop, Inc. produces or uses in their products.

Material	Chemical	CAS #	Cancer, Reproductive Harm or Both?
Cast Iron	Nickel	7440-02-0	Cancer
	Arsenic	7440-38-2	Both
	Cobalt	7440-48-4	Cancer
	Lead	7439-92-1	Both
Steel	Nickel	7440-02-0	Cancer
Stainless Steel	Nickel	7440-02-0	Cancer
Paint Finishes	Carbon Black	1333-86-4	Cancer
	Toluene	108-88-3	Reproductive Harm
	Lead	7439-92-1	Both
Rubber Compounds	Acrylonitrile	107-13-1	Cancer
	Butadiene	106-99-0	Both
	DEHP	117-81-7	Both
EPDM	Carbon Black	1333-86-4	Cancer
Petroleum	Cadmium	-----	Both
Petroleum	Isoprene	78-79-5	Cancer

Additional information on Proposition 65 can be obtained by visiting the State of California's Proposition 65 website:

<https://oehha.ca.gov/proposition-65/about-proposition-65>

Summary of Proposition 65 requirements:

<https://oehha.ca.gov/proposition-65/general-info/proposition-65-plain-language>

Clear and reasonable notice requirements:

<https://oehha.ca.gov/proposition-65/cnr/notice-adoption-article-6-clear-and-reasonable-warnings>

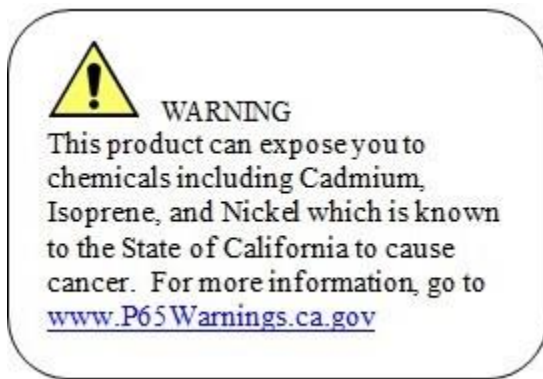
Chemicals and substances regulated by Proposition 65:

<https://oehha.ca.gov/proposition-65/proposition-65-list>

Proposition 65 Laws and Regulations:

<https://oehha.ca.gov/proposition-65/law/proposition-65-law-and-regulations>

Minden Machine Shop, Inc. has placed this decal on our products to alert the user to the possible exposures.



Minden Machine Shop Inc

LIMITED WARRANTY

Minden Machine Shop Inc warrants all products manufactured by it to be free of defect in material and workmanship for a period of one (1) year from the date of purchase.

This Minden Machine Shop Inc. warranty does not cover:

1. Parts and accessories supplied by Minden Machine Shop Inc. but manufactured by others. Minden Machine Shop Inc. will facilitate the other manufacturer warranty for the benefit of the purchaser but will not be bound thereby (example: augers, motors, trailers, tanks, etc.).
2. Products that have been altered by anyone other than a Minden Machine Shop Inc. employee or are used by the purchaser, for purposes other than what was intended at time of manufacture or used in excess of the "built specifications".
3. Products that are custom manufactured by Minden Machine Shop Inc. utilizing the purchaser's design which deviates from Minden Machine Shop Inc. normal production line manufactured or customized features of the products.
4. Malfunctions or damages to the product from misuse, negligence, customer alteration, accidents or product abuse due to incoming material or poor material flow ability or lack of required performance or required maintenance (e.g., poor material flow ability caused by incoming wet fertilizer or hot soybean meal, etc).
5. Loss of time, inconvenience, loss of material, down time or any other consequential damage.
6. Product use for a function that is different than designed intent (e.g., storing soybean meal in grain bin, unacceptable material in the bin such as hot bean meal when product originally designed for other application, etc).
7. Minden Machine Shop Inc is not responsible for any equipment that this product is attached to or mounted on.

To activate this warranty, the purchaser must make contact in writing with Minden Machine Shop Inc. within one (1) year of date of purchase. After contact, Minden Machine Shop Inc. has the right to determine the cause and qualify the legitimacy of the claim. Minden Machine Shop Inc., upon acceptance of a warranty claim, shall have a reasonable time to plan any repair or replacement and may affect repair or replacement out of its factory or through contract with a local repair service. If a purchaser after warranty notice is made, chooses to make the repair itself, Minden Machine Shop Inc. must approve any expenses before they are incurred to be responsible for customer reimbursement. Minden Machine Shop Inc. shall be liable on a warranty claim for repair or replacement of any defective products and this is the purchaser's sole and exclusive remedy. Minden Machine Shop Inc. will not be liable for any other or further remedy including claims for personal injury, property damage or consequential damage. The law of the State of Nebraska shall govern and any such claim and any issues with regard to the same shall be resolved in the Nebraska District Court for the county of Kearney.

RETURN OF MERCHANDISE

Merchandise may not be returned without written approval from the factory. All returns must have a return authorization number. Obtain this number before the return and show it on all return items. A 15% restocking charge is made on merchandise returned. Returned merchandise must be shipped pre-paid.

RECEIVING MERCHANDISE AND FILING CLAIMS

When receiving merchandise it is important to check both the number of parts and their description with packing slip. The consignee must make all claims for freight damage or shortage within 10 days from the date of delivery.

When the material leaves the factory it becomes the property of the consignee. It is the responsibility of the consignee to file a claim on any possible damage or loss. Please list your preferred routing on purchase orders.

MODIFICATIONS

It is the policy of Minden Machine Shop Inc. to improve its products whenever possible and practical to do so. We reserve the right to make changes, improvements and modifications at any time without incurring the obligation to make such changes, improvements and modifications on any equipment sold previously.

WARRANTY REGISTRATION

To register equipment, or file a claim, copy and paste the words on this page into an email or word document, fill out the appropriate information completely, and email it to larry@mindenmachine.com with the subject as EQUIPMENT WARRANTY, or fill it out and fax it to 308-832-1340.

Dealer Information: Not Applicable, check here: []

Dealer Name:

Address:

City:

State:

Zip Code:

Phone #:

Email:

End User Information:

Purchaser:

Address:

City:

State:

Zip Code:

Phone #:

Email:

Equipment:

Serial #:

Date Of Purchase: / /