

SCALE INSTALLATION AND ASSEMBLY

SCALE UNIT

DESCRIPTION	QTY.
1/4 BUTTON HEAD BOLTS	6
1/4 LOCK WASHERS	6
1/4 NUTS	6
1/4 FLAT WASHERS	2

TENDER MOUNTS

DESCRIPTION	QTY.
1/2 X 2 BOLTS	7
1/2 FLAT WASHERS	14
1/2 NYLOCK NUTS	7

TRAILER MOUNTS

DESCRIPTION	QTY.
1/2 X 1 1/2 BOLTS	16
1/2 FLAT WASHERS	16
1/2 LOCK WASHERS	16
1/2 NUTS	16
5/16 X 2-1/2 BOLTS	4
5/16 X 3 BOLTS	4
5/16 LOCKWASHERS	8
5/16 NUTS	8



STEP 1: GATHER PARTS

1. MONITOR
2. RUBBER GROMMET
3. CABLEWRAP
4. HANGER
5. BOLTS



STEP 2: MARK HOLES

USING THE HANGER AS A TEMPLATE, LEVEL THE HANGER WITH A LEVEL AND USE A PAINT PEN TO MARK THE 4 MOUNTING HOLES.



STEP 3: SWITCH HOLES

MOVE DOWN AND TO THE RIGHT OF THE 4 MOUNTING HOLES FOR THE HANGER MARK ONE HOLE FOR THE SWITCH. BE SURE THE SWITCH WILL NOT INTERFERE WITH THE HANGER AND MONITOR.



STEP 4: RUBBER GROMMET

MEASURE 8 INCHES DOWN FROM THE HANGER HOLES AND PUT A MARK WITH THE PAINT PEN. THE MARK IS ROUGHLY CENTERED BETWEEN THE HANGER HOLES.



STEP 5: CENTER PUNCH THE HOLES THAT HAVE BEEN MARKED.



STEP 6: DRILL HOLES USING A 3/16" DRILL BIT, DRILL ALL THE HOLES. NEXT, FOR THE HANGER HOLES, DRILL THEM USING A 5/16" DRILL BIT. FINALLY, THE RUBBER GROMMET HOLE MUST BE DRILLED USING A 13/16" BIT.



HOW THE HOLES SHOULD LOOK WHEN DRILLING IS COMPLETED.



STEP 7: GROMMET HOLE

LOCATE THE MANUAL HOLE PUNCH AND USE IT TO PUNCH THE HOLE FOR THE RUBBER GROMMET



USE THE SOCKET AND BREAKER BAR TO PUNCH THE HOLE FOR THE RUBBER GROMMET.



STEP 8

ATTACH THE HANGER AND THE WIRE WRAP. USE 4; 1/4" BUTTONHEAD BOLTS, 4; 1/4" LOCK WASHERS, 2; 1/4" FLAT WASHERS, 4; 1/4" NUTS. BE SURE TO MOUNT THE WIRE WRAP ON THE BACK SIDE OF THE UPRIGHT. TIGHTEN ALL FASTENERS. INSTALL THE RUBBER GROMMET INTO THE PUNCHED HOLE.



STEP 9

MOUNT THE MONITOR USING 2; 1/4" BUTTONHEAD BOLTS AND THE 1/4" NYLOCK NUTS. TIGHTEN ALL FASTENERS, BE CAREFUL NOT TO BREAK THE PLASTIC MONITOR HOUSING.



FIG. 10-1



FIG. 10-2



FIG. 10-3

STEP 10

THERE SHOULD BE 3 WIRES COMING OFF THE SWITCH. WRAP THE NOOK WIRE AND MONITOR WIRE AROUND THE WIRE WRAP BRACKET ONCE THEY ARE SHORT ENOUGH (FIG. 10-1).

NEXT, TAKE THE NOOK WIRE AND THE BATTERY WIRE AND RUN THEM DOWN THE LEG (FIG. 10-2).

FINALLY, THE BATTERY WIRE CAN BE CUT TO LENGTH FOR A PROPER FIT (FIG. 10-3).



FIG. 11-1

STEP 11

GATHER THE PARTS FOR THE TRAILER

1. WEIGHT BAR
2 @ 21' CORD LENGTH
2 @ 11' CORD LENGTH
2. MAIN HOUSING - 4
3. TENDER MOUNT - 4
4. BOLTS

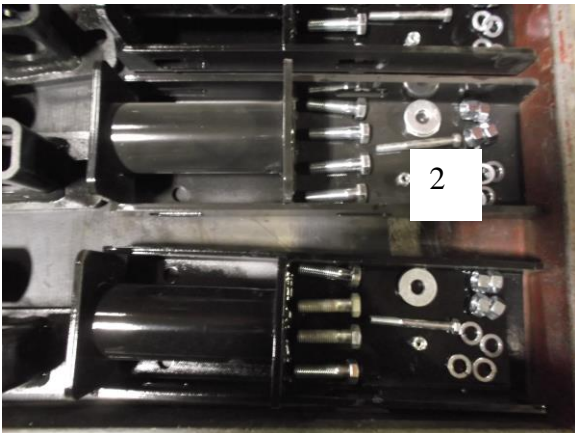
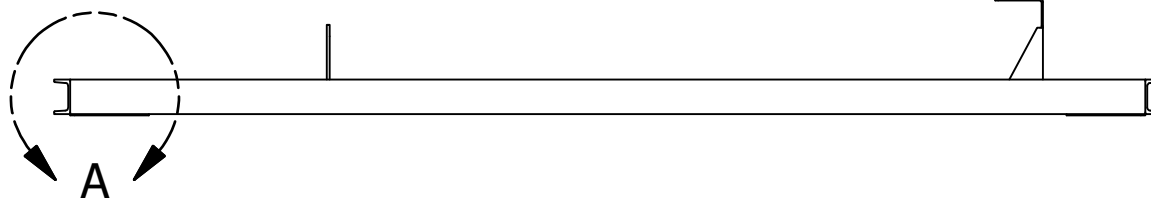
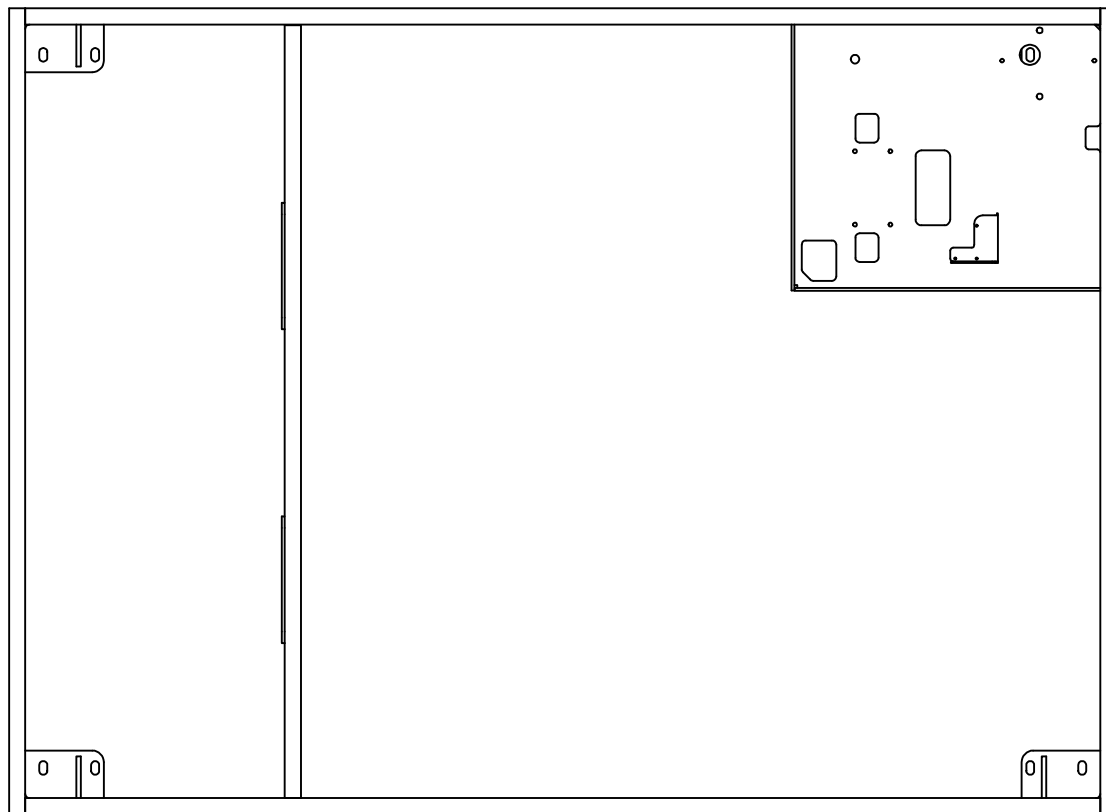
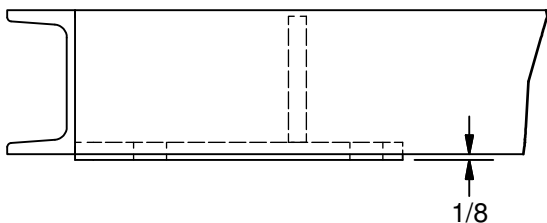
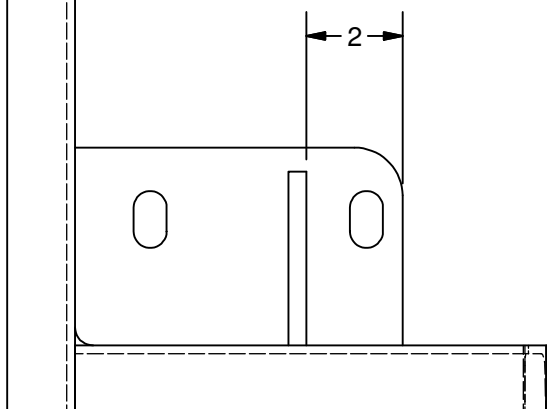



FIG. 11-2

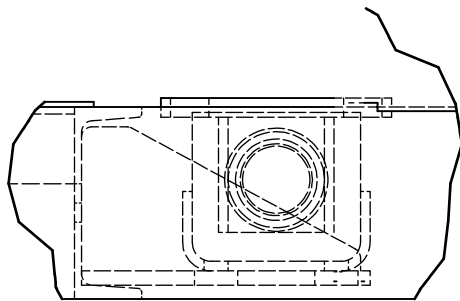
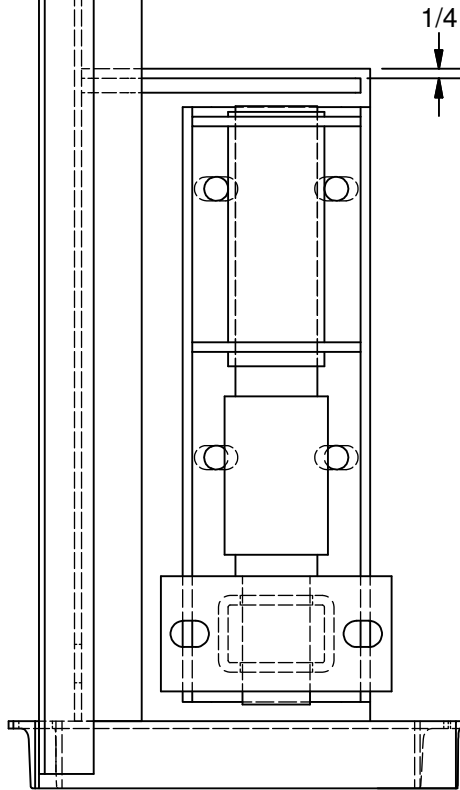


FIG. 11-3

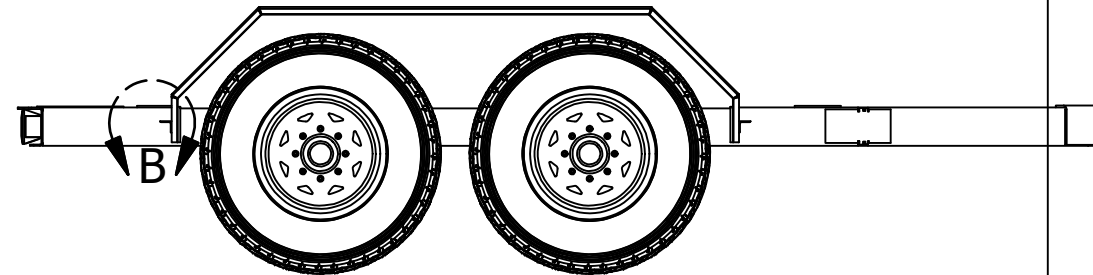
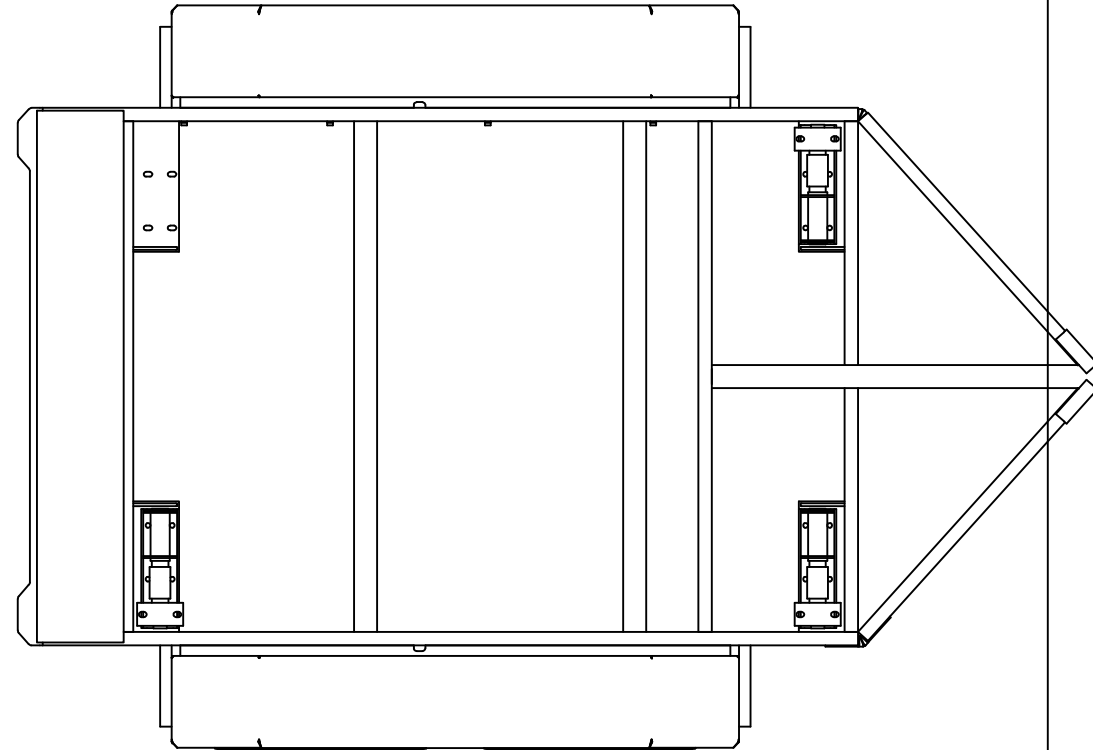


HOLES ORIENTED INWARD
 SPACE PADS DOWN .125" FROM FLUSH
 PLACE SMALL TRIANGLE GUSSETS AS SHOWN
 PAD UNDER BATTERY TRAY REQUIRES ONLY ONE BOLT
 SLIGHTLY RELOCATE BATTERY TO AVOID BOLT HEAD

Minden Machine Shop Inc. 1302 K Road Minden, NE 800-264-6587 / 308-832-0220		 Minden Machine Shop, Inc.		Customer	
Filename		Description		Customer	
10217 subframe with scale mounts.iam		10217 subframe with scale mounts		Project	
MMSI Part #		This drawing and the information heron are the property of Minden Machine Shop Inc. and may be used only as authorized by us. Unpublished- All rights reserved under the copyright laws.			
10217 subframe with scale mounts					
Drawn by	Date	Rev.	Mfg. Date	Scale	Sheet1 of2
Brian Mellies	12/29/2011	1			



HOLES ORIENTED INWARD
 PLACE PADS ON INSIDE OF CHANNEL
 TRIANGLE GUSSETS .25" TO FLUSH WITH EDGE
 LOAD CELL UNDER BATTERY TRAY REQUIRES ONLY ONE BOLT




Minden Machine Shop Inc. 1302 K Road Minden, NE 800-264-6587 / 308-832-0220			 Minden Machine Shop, Inc.			Customer Customer Project					
Filename 13 Trailer w SCALES.iam						Description Description					
MMSI Part # 10217 subframe with scale mounts						This drawing and the information heron are the property of Minden Machine Shop Inc. and may be used only as authorized by us. Unpublished- All rights reserved under the copyright laws.					
Drawn by Brian Mellies		Date 12/29/2011		Rev. 1		Mfg. Date		Scale		Sheet2 of2	



FIG. 12-1

STEP 12

BOLT THE WEIGHT BAR IN THE MAIN HOUSING USING THE 5/16 X 3 BOLT WITH THE 5/16" LOCK WASHER AND THE 5/16" NUT (FIG. 12-1).

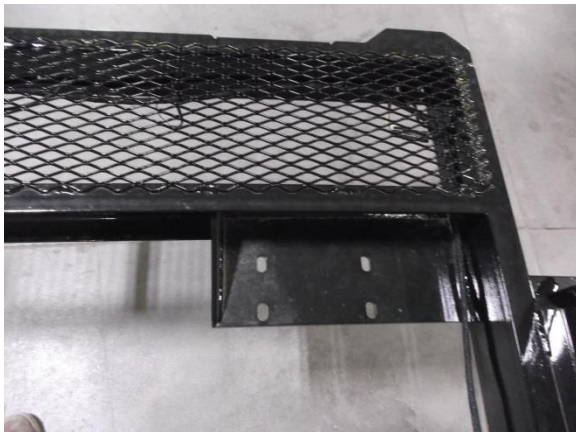
WHEN PLACING THE WEIGHT BAR, MAKE SURE THE ARROW IS DOWN AS SHOWN IN FIG. 12-2.



FIG. 12-2

SLIDE THE TENDER MOUNT ON THE END OF THE WEIGHT BAR (WITH THE ARROW STICKER) AND PUT IN THE 3/8 X 2-1/2" BOLT TO RETAIN THE TENDER MOUNT. SECURE WITH 3/8" LOCK WASHER AND 3/8" NUT (FIG. 12-2).

TIGHTEN ALL FASTENERS.



STEP 13

PLACE THE ASSEMBLE WEIGHT BARS ON THE TRAILER AND MAKE SURE THAT THEY ARE FLUSH WITH THE TRAILER MOUNTS. PLEASE NOTE: THE ASSEMBLE WEIGHT BARS WITH THE 21' CORDS WILL BE PLACED AT THE REAR OF THE TRAILER AND THE ASSEMBLED WEIGHT BARS WITH THE 11' CORDS WILL BE AT THE FRONT OF THE TRAILER.





STEP 14

INSERT THE 1/2 X 1 1/2" BOLTS INTO THE ASSEMBLED WEIGHT BARS. USE A 1/2" FLAT WASHER, 1/2" LOCK WASHER, AND 1/2" NUT TO FASTEN THE WELDMENT TO THE TRAILER. TIGHTEN ALL FASTENERS.



STEP 15

ATTACH THE TENDER TO THE WEIGHT BAR ASSEMBLIES USING THE 1/2 X 2" BOLTS, WITH 2, 1/2" FLAT WASHERS (TOP AND BOTTOM), 1/2" LOCK WASHERS AND 1/2" NUTS. TIGHTEN ALL FASTENERS. REPEAT FOR ALL WEIGHT BAR ASSEMBLIES.



FIG. 16-1

STEP 16

RUN THE WIRES BACK TO THE MONITOR.
BE SURE TO USE THE WIRE TIES THAT ARE
WELDED ON THE TENDER TO HOLD THE
WIRES IN PLACE FIG. 16-1, FIG. 16-2, AND
FIG. 16-3



FIG. 16-2



FIG. 16-3



FIG. 17-1

STEP 17

WRAP ALL THE WIRE ON THE CABLE WRAP (FIG. 17-1) UNTIL THERE IS ENOUGH WIRE TO GET TO THE MONITOR (FIG. 17-2)

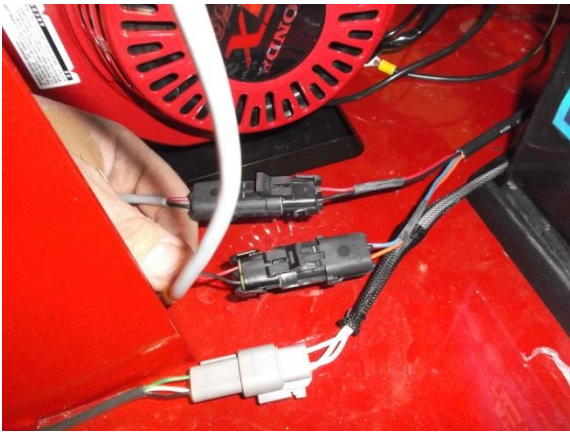


FIG. 17-2



STEP 18

CONNECT ALL THE SCALE WIRES. THERE IS NO ORDER TO HOW THE WIRES ARE CONNECTED.



STEP 19

PLUG IN THE NOOK WIRES TO THE SCALE.



STEP 20

CORRECTLY ATTACH THE BATTERY WIRES TO THE BATTERY NOTING POLARITY OF THE WIRES AND THE CORRECT BATTERY POST.



STEP 21

*CAUTION PROGRAMMING DONE AT THE FACTORY ONLY

PROGRAMMING THE SCALE

1. TURN THE MONITOR ON
2. PRESS "ON" AND "NET/GROSS" AT THE SAME TIME UNTIL IT READS "PRESS"
3. AFTER "PRESS", TYPE IN "301" AND PRESS "SELECT"
4. RUN THROUGH THE WEIGHT DISTRIBUTION NUMBERS UNTIL 2# INCREMENTS IS REACHED
5. PRESS "ON"
6. MONITOR IS NOW PROGRAMMED.

