



Wire Winder 6500
Owner's Manual



Manufactured by
Patriot Equipment
1302 K Road
Minden, NE 68959
1-308-832-0220

Table of Contents

Introduction	3
Safety and Operation Rules	4
Safety Decals	9
Machine Measurements	11
Bolt Torque Table	12
Operation	13
Troubleshooting	18
Service and Maintenance	19
Storage	19
Parts Diagram	20
Proposition 65	27
Warranty	29

INTRODUCTION

Thank you for purchasing a Patriot Equipment Wire Winder! We hope you will get many years of productive use from it. The Wire Winder has been designed to perform a certain function. All product users must read and understand this manual prior to equipment operation. This manual is considered part of your machine and should remain with the machine at all times. Do not allow anyone to operate or maintain this equipment if they have not fully read and comprehended this manual. Failure to follow the recommended procedures may result in personal injury or death or equipment damage.

Information in this manual is designed to help owners and operators to obtain the best results and safe operation from their investment. The life of any machine depends largely on the care it is given and we suggest that the manual should be read and understood and referred to frequently. If for any reason you do not understand the instructions and safety requirements, please contact your authorized dealer. The intent of this manual is to provide guidelines to cover general use and to assist in avoiding accidents and injuries.

There may be times when circumstances occur that are not covered in the manual. At those times it is best to use common sense and contact your authorized dealer or our factory.

The requirements of safety cannot be emphasized enough in this publication. We urge you to make safety your top priority when using and maintaining the equipment. We strongly advise that anyone allowed to operate this equipment be thoroughly trained and tested, to prove they understand the fundamentals of safe operation.

Some photographs, diagrams or illustrations in this manual may show doors, guards and shields opened or removed to aid in clarity and understanding of a particular procedure. All guards, shields and safety devices must be in their proper position prior to operation.

SAFETY AND OPERATION RULES

General Safety Statements

Safety precautions are essential when the use of any mechanical equipment is involved. These precautions are necessary when using, storing, and servicing mechanical equipment. Using the Wire Winder with the respect and caution demanded will considerably lessen the possibilities of personal injury. If safety precautions are overlooked or ignored, personal injury or property damage may occur.

The Wire Winder was designed for a specific application. It should not be modified and/or used for any application other than which it was designed. If there are any questions regarding its application, please write or call. Do not use this unit until you have been advised. For more information contact:

Patriot Equipment
1302 K Rd
Minden, NE 68959
308-832-0220

Read this entire manual carefully. Know your equipment. Consider the application, limitations, and the potential hazards specific to your unit. Operator and bystander safety is of prime concern to us. This manual was written with the safety of the operator and others who come in contact with the equipment. This manual was written to help you understand the safe operating procedures of the product. We want you as our partner in safety. A copy of this manual should be available to all persons who may operate this machine.

It is your responsibility as an owner, operator, or supervisor to know what specific requirements, precautions, and work hazards exist and to make these known to all other personnel working with the equipment or in the area, so that they too may take any necessary safety precautions that may be required. Avoid any alterations of the equipment. Such alterations may create a dangerous situation where serious injury or death may occur and will void warranty.

Why is SAFETY important? Three reasons:

1. Accidents disable and kill
2. Accidents cost money
3. Accidents can be avoided

Note the use of the signal words **DANGER**, **WARNING**, and **CAUTION** with safety messages. The appropriate signal word for each message has been selected using the following guidelines:

DANGER: An immediate and specific hazard which will result in severe personal injury or death if proper precautions are not taken.

WARNING: A specific hazard or unsafe practice which could result in severe personal injury or death if proper precautions are not taken.

CAUTION: Unsafe practices which could result in personal injury if proper precautions are not taken or a reminder of good safety practices.

Safety Alert Symbol



BE ALERT! YOUR SAFETY IS INVOLVED!

The symbol shown above is used to call your attention to instructions concerning your personal safety. Watch for this symbol – It points out important safety precautions. The symbol means: ATTENTION! BECOME ALERT! YOUR PERSONAL SAFETY IS INVOLVED! Read the message that follows and be alert to the possibility of personal injury or death.

Read this manual before operating or working around the equipment! This manual must be delivered with the equipment to its owner and operator. Failure to read this manual and its safety instructions is a misuse of equipment.

Safety Equipment

Please, remember safety equipment provides important protection for persons around a machine that is in operation. Be sure ALL safety shields and protective devices are installed and properly maintained. If you find any shields or guards damaged or missing, contact Patriot Equipment for the correct items.

Safety Procedures



1. Use only the correct equipment with the proper capacity when installing or removing the Wire Winder.
2. Use correct lifting equipment when unloading the Wire Winder or when unloading a full spool of wire from the Wire Winder. Equipment with too little capacity may tip towards the front where the lifted weight is.
3. Do not operate unit without safety shields or guards in place.
4. IMPORTANT: Use caution when transporting. Be alert of the transport unit's overall width when approaching obstacles, such as post sign and poles, along the road. Check the transport width of the unit to ensure clearance before entering.
5. Comply with all safety warnings and cautions in this manual as well as the operator's manuals of any tow vehicles that may be used.
6. Do not allow any riders on the machine when in use.
7. In case of any defect or awareness of potential danger, please contact Patriot Equipment at 1-800-264-6587 immediately.

Operator Qualifications



Operation of the Wire Winder shall be limited to competent and experienced persons. In addition anyone who will operate or work around the machine must use good common sense. In order to be qualified, they must also know and meet all other requirements, such as:

1. Some regulations specify that no one under the age of 18 may operate power machinery. It is your responsibility to know what these regulations are in your own area or situation.
2. Current Occupational Safety Health Administration regulations state in part: "At the time of initial assignment and at least annually thereafter, the employer shall instruct every employee or user in the safe operation and servicing of all equipment with which the employee or user is, or will be involved."
3. Unqualified persons are to stay out of the work area.
4. A person who has not read and understood all operating and safety instruction is not qualified to operate the machine.

Safety Overview

YOU are responsible for SAFE operation and maintenance of the Wire Winder. YOU must ensure that you and anyone who is going to operate and maintain or work around the Wire Winder must be familiar with the operating, maintenance, and safety information contained in the manual.

Remember YOU are the key to safety. GOOD PRACTICES protect not only you but also the people around you. Make these practices a working part of your safety program. Be certain EVERYONE operating this machine is familiar with the procedures recommended and follows safety precautions. Remember, most accidents can be prevented. Do not risk injury or death by ignoring any information addressed.

Machine owners must give operating instructions to operators before allowing them to operate the machine. They must be reviewed at least annually thereafter per OSHA regulation 1928.57.

The most important safety device on the equipment is a SAFE OPERATOR. It is the operator's responsibility to read and understand ALL instructions in the manual and to follow them. All accidents can be avoided!

Any person who has not read and understood all operation and safety instructions is not qualified to operate the Wire Winder. An untrained operator exposes themselves and bystanders to possible serious injury or death.

Do not modify the equipment in any way. Unauthorized modifications may impair the functions and/or safety and could affect the life of the equipment.

Safety Affirmation

1. I have read and understand the operator's manual and all safety signs before operation, maintenance, adjusting, or unplugging the Wire Winder.
2. I will allow only trained persons to operate the Wire Winder. *An untrained operator is not qualified to operate this equipment.
3. I have access to a fire extinguisher.
4. I have all guards in place and will not operate the Wire Winder without them.
5. I will not allow riders on the Wire Winder.
6. I understand the danger of moving parts (rotating parts, hydraulics, and pinch points) and will stop the engine before servicing.
7. I recognize the danger of the machine coming in contact with power lines.
8. I have the safety lock up pins and know and understand where and when to use them.
9. I understand that any accidents that occur with the Wire Winder are my responsibilities.
10. I understand that Patriot Equipment will not be held responsible for any accidents that involve the Wire Winder.

Sign Off Sheet

(This sheet should be signed annually as part of your safety program)

As a requirement of OSHA, it is necessary for the owner/employer to train the employee in the safe operation and safety procedures with the Wire Winder. We include this sign off sheet for your convenience and personal record keeping.

DATE	EMPLOYER SIGNATURE	EMPLOYEE SIGNATURE

Machine Inspection

After delivery of your new Wire Winder and/or completion of assembly, and before each use, inspection of the Wire Winder is mandatory. This inspection should include, but not be limited to:

1. Check to see that all guards are in place, secured and functional.
2. That all fasteners are tight.
3. That all belts and chains are free from defects and correctly tensioned.
4. All springs are in working order and secured
5. Inspect the engine for oil level and fuel level.

Serial Number

To ensure efficient and prompt service, please furnish us with the model and serial number of the machine in all correspondence or other contact. The serial number is located on a visible location of the machine.

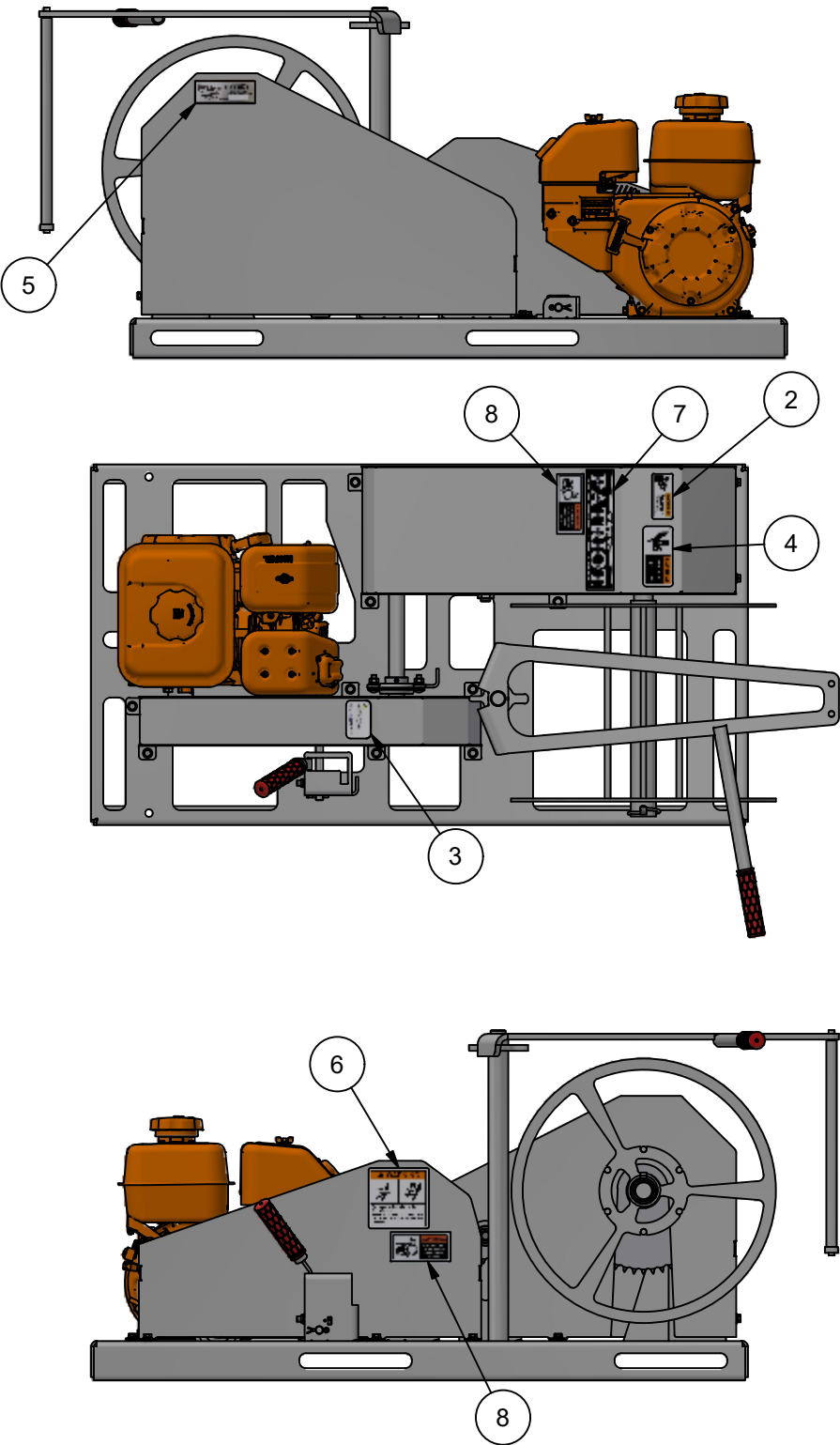
Safety Decals

1. Keep safety decals clear and legible at all times.
2. Replace decals and signs that are missing or have become unreadable.
3. Safety signs are available from your Dealer or the Manufacturer.

How to install Safety Decals

1. Be sure that the installation area is clean and dry.
2. Decide on the exact position before you remove the backing paper.
3. Align the decal over the specified area and carefully press the small portion with the exposed sticky backing in place.
4. Slowly peel back the remaining paper and carefully smooth the remaining portion of the decal in place.
5. Small air pockets can be pierced with a pin and smoothed out using a piece of decal backing paper.

WIRE WINDER
DECALS



Parts List

ITEM	QTY	PART NUMBER	DESCRIPTION
1	1	WW-6500	WW6500 Assembly
2	1	TS2017	Read Manual Before Use
3	1	TS2018	P65 California Warning
4	1	TS2012	Single Pinch Point
5	1	TS2003	Serial Number Decal
6	1	TS2013	Machine Operating Warning
7	1	TS2004	Patriot Decal
8	2	CSP152	ROTARY PINCH POINT

Minden Machine Shop Inc.
1302 K Road Minden, NE
308-832-0220

WIRE WINDER DECALS



TS2003

TS2004



TS-2017



TS-2018

TS2012

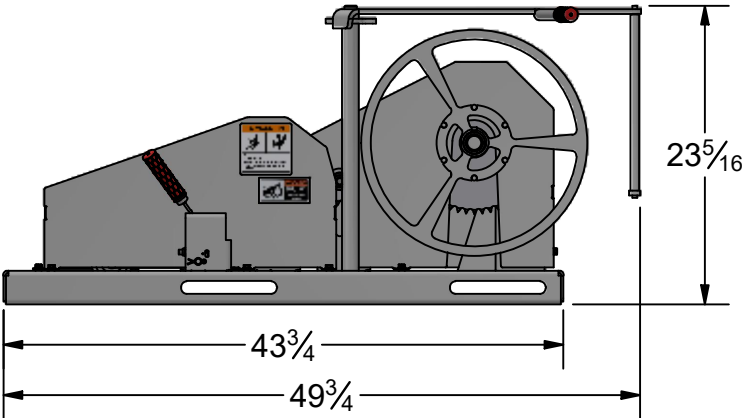
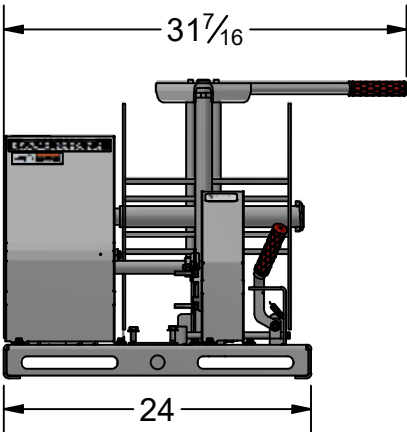
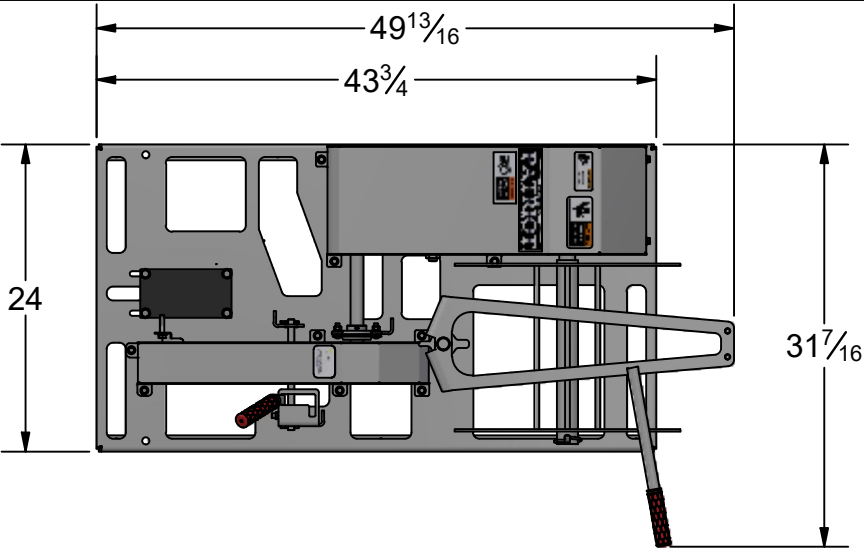


TS2013

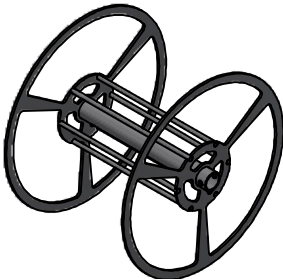


CSP152

WIRE WINDER DIMENSIONS AND CAPACITIES



WIRE WINDER EMPTY WEIGHT: APPROXIMATELY 200 LBS.



- WIRE SPOOL CAPACITIES:
- STANDARD WIRE: 2 MILES (10,560 FEET)
- BARB WIRE: 1.25 MILES (6,600 FEET)



CAUTION! FULL SPOOLS OF WIRE WILL BE HEAVY!

Minden Machine Shop Inc.
1302 K Road Minden, NE
308-832-0220

Torque Data for Standard Nuts, Bolts, and Capscrews

Tighten all bolts to torques specified in chart unless otherwise noted. Check tightness of bolts periodically, using bolt chart as guide. Replace hardware with same grade bolt.

Note: Unless otherwise specified, high-strength Grade 5 hex bolts are used throughout assembly of equipment.

Bolt Torque for Standard Bolts

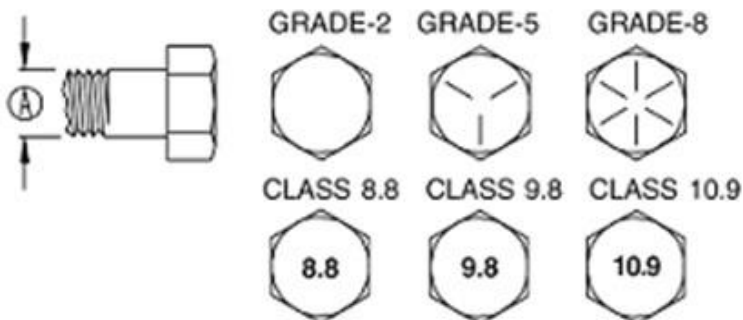
Bolt Size A	Grade 2		Grade 5		Grade 8	
	lb-ft	(N.m)	lb-ft	(N.m)	lb-ft	(N.m)
1/4"	6	8	9	12	12	16
5/16"	10	13	18	25	25	35
3/8"	20	27	30	40	45	60
7/16"	30	40	50	70	80	110
1/2"	45	60	75	100	115	155
9/16"	70	95	115	155	165	220
5/8"	95	130	150	200	225	300
3/4"	165	225	290	390	400	540
7/8"	170	230	420	570	650	880
1"	225	300	630	850	970	1310

Torque figures indicated are valid for non-greased or non-oiled threads and heads unless otherwise specified. Therefore, do not grease or oil bolts or capscrews unless otherwise specified in this manual. When using locking elements, increase torque values by 5%.

Bolt Torque for Metric Bolts

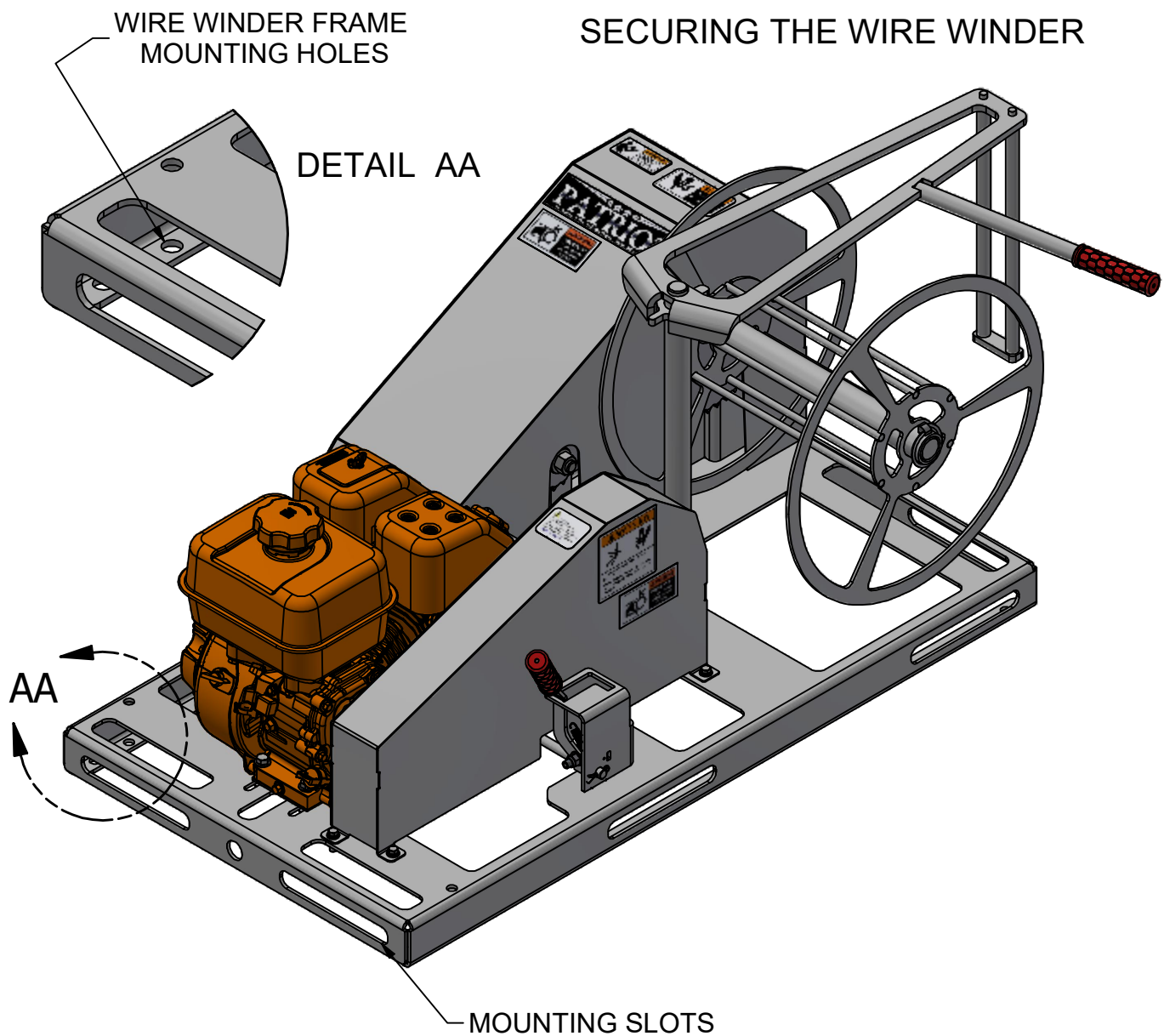
Bolt Size A	Class 8.8		Class 9.8		Class 10.9	
	lb-ft	(N.m)	lb-ft	(N.m)	lb-ft	(N.m)
6	9	13	10	14	13	17
7	15	21	18	24	21	29
8	23	31	25	34	31	42
10	45	61	50	68	61	83
12	78	106	88	118	106	144
14	125	169	140	189	170	230
16	194	263	216	293	263	357
18	268	363	364	493
20	378	513	515	689
22	516	699	702	952
24	654	886	890	1206

Grade or Class value for bolts and capscrews are identified by their head markings.



Operation

SECURING THE WIRE WINDER



DANGER!

THE WIRE WINDER NEEDS BE SECURED TO THE VEHICLE THAT IT WILL BE USED IN. USE THE MOUNTING SLOTS IN THE FRAME OF THE WIRE WINDER OR THE MOUNTING HOLES IN THE BOTTOM OF THE FRAME TO SECURE THE WIRE WINDER TO THE VEHICLE.

THE WIRE WINDER WILL HAVE TO BE SECURED SO THAT AS IT IS OPERATING, IT DOESN'T PULL ITSELF OUT OF THE VEHICLE. ALSO, THE WIRE WINDER NEEDS TO BE SECURED FOR SAFE TRANSPORT.

THE WIRE WINDER WEIGHS APPROXIMATELY 200 LBS., EMPTY.

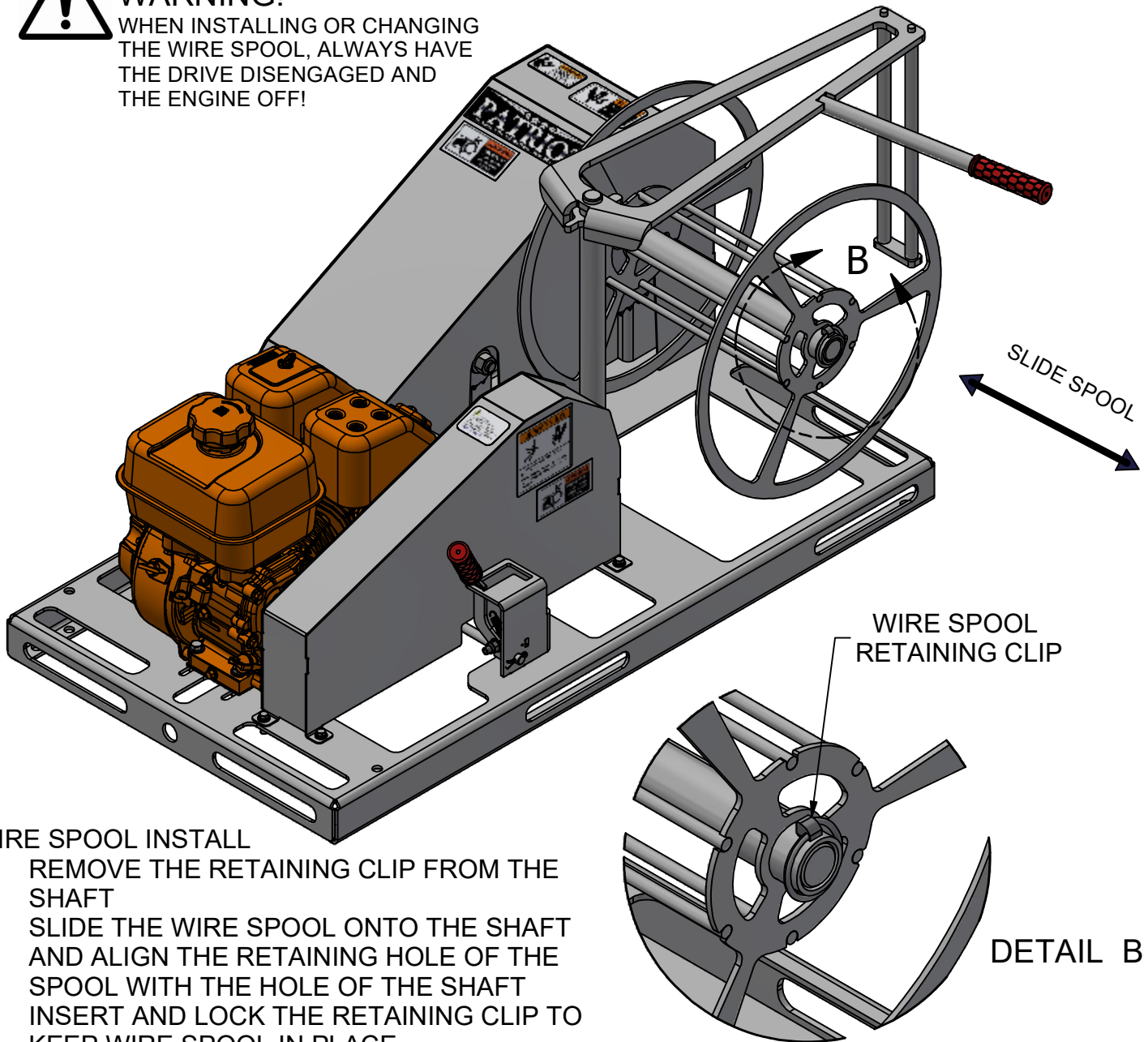
Minden Machine Shop Inc.
1302 K Road Minden, NE
308-832-0220

WIRE SPOOL ATTACHING AND DETACHING



WARNING!

WHEN INSTALLING OR CHANGING THE WIRE SPOOL, ALWAYS HAVE THE DRIVE DISENGAGED AND THE ENGINE OFF!



WIRE SPOOL INSTALL

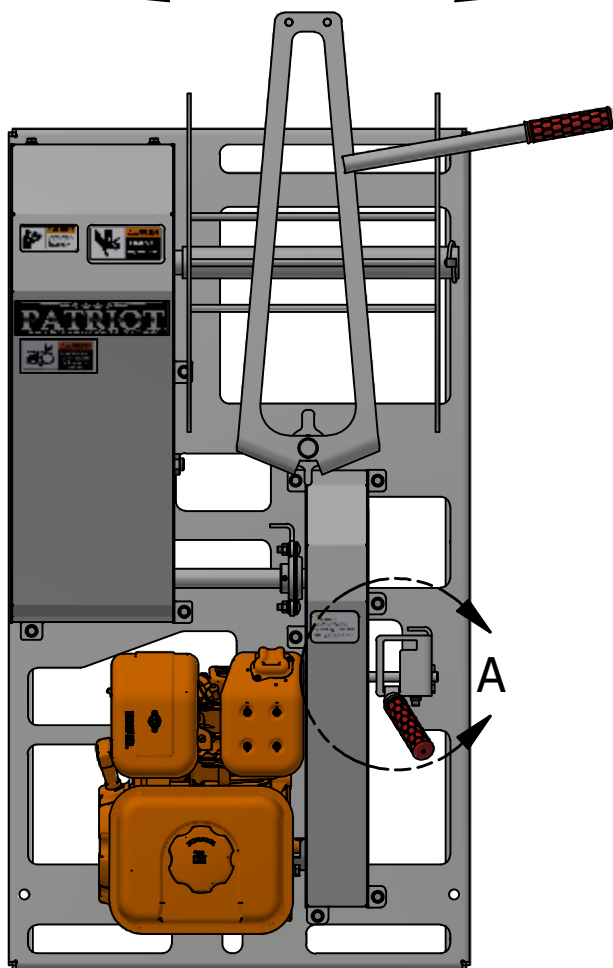
1. REMOVE THE RETAINING CLIP FROM THE SHAFT
2. SLIDE THE WIRE SPOOL ONTO THE SHAFT AND ALIGN THE RETAINING HOLE OF THE SPOOL WITH THE HOLE OF THE SHAFT
3. INSERT AND LOCK THE RETAINING CLIP TO KEEP WIRE SPOOL IN PLACE

CHANGING A WIRE SPOOL

1. WHEN THE WIRE SPOOL HAS THE DESIRED AMOUNT OF WIRE ON IT, IT WILL NEED TO BE REPLACED WITH AN EMPTY WIRE SPOOL.
2. DISENGAGE THE DRIVE AND THE ENGINE MUST BE TURNED OFF
3. REMOVE THE WIRE SPOOL RETAINING CLIP
4. SLIDE THE WIRE SPOOL OFF AND STORE IN AN APPROPRIATE LOCATION
5. SLIDE AN EMPTY WIRE SPOOL ONTO THE SHAFT AND ALIGN THE RETAINING HOLE WITH THE SHAFT HOLE
6. REPLACE THE RETAINING CLIP AND LOCK INTO PLACE TO KEEP THE WIRE SPOOL IN PLACE
7. THE WIRE WINDER IS READY TO WIND MORE WIRE

Minden Machine Shop Inc.
1302 K Road Minden, NE
308-832-0220

MOVE HANDLE BACK AND FORTH
TO LOAD THE WIRE EVENLY



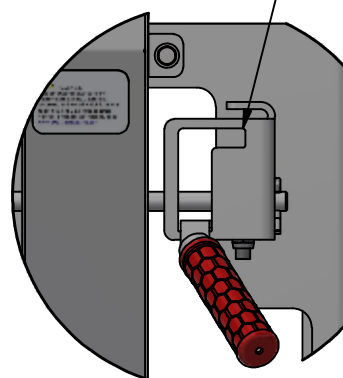
WIRE WINDER OPERATION



WARNING

ALWAYS USE A WEIGHT ON THE END OF THE WIRE BEFORE YOU START WINDING! THE WEIGHT PREVENTS THE WIRE FROM MOVING ERRATICALLY AROUND WHEN IT COMES TO THE END, NEAR THE MACHINE.

MOVE DRIVE HANDLE TO
THE SLOT TO KEEP
WIRE WINDER
ENGAGED

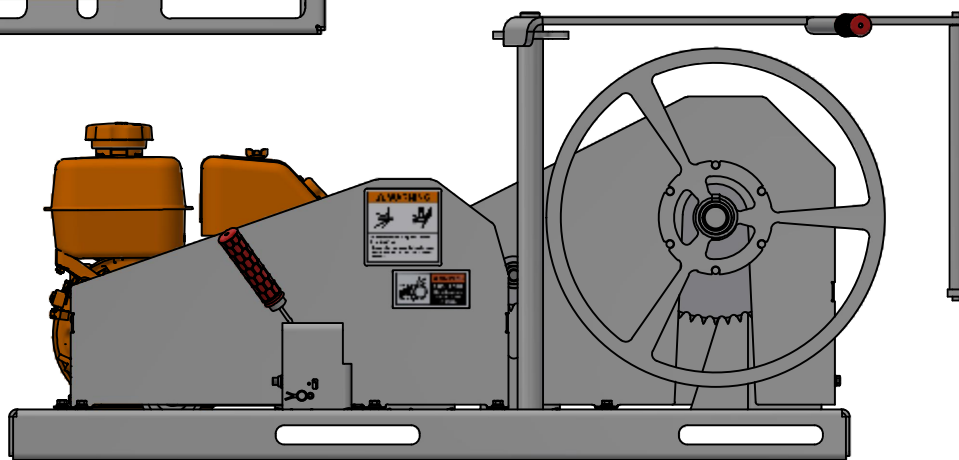


DETAIL A

WINDER
ENGAGED

MOVE DRIVE
HANDLE BACK
AND FORTH TO
ENGAGE OR
DISENGAGE THE
WIRE WINDER

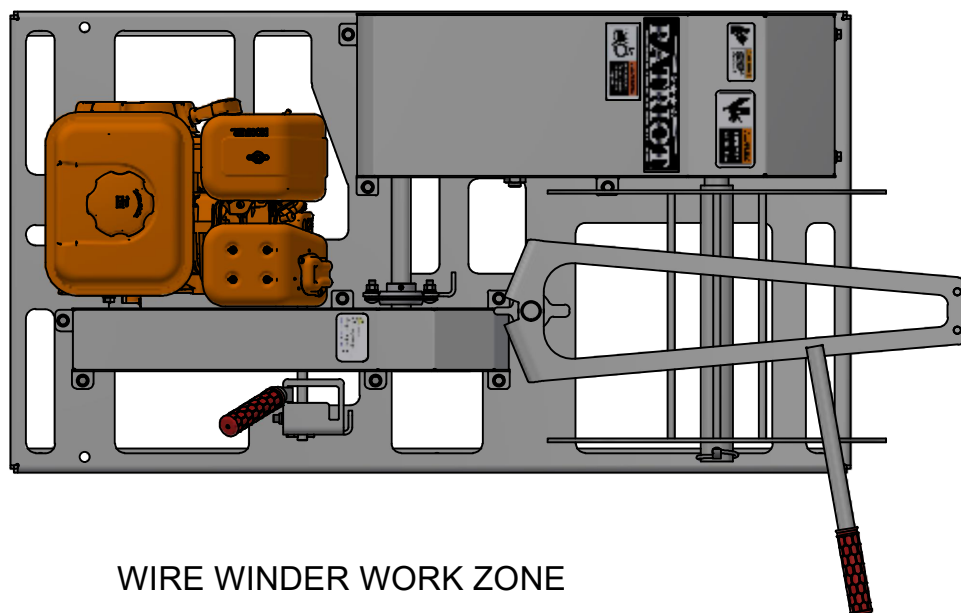
WINDER
DISENGAGED



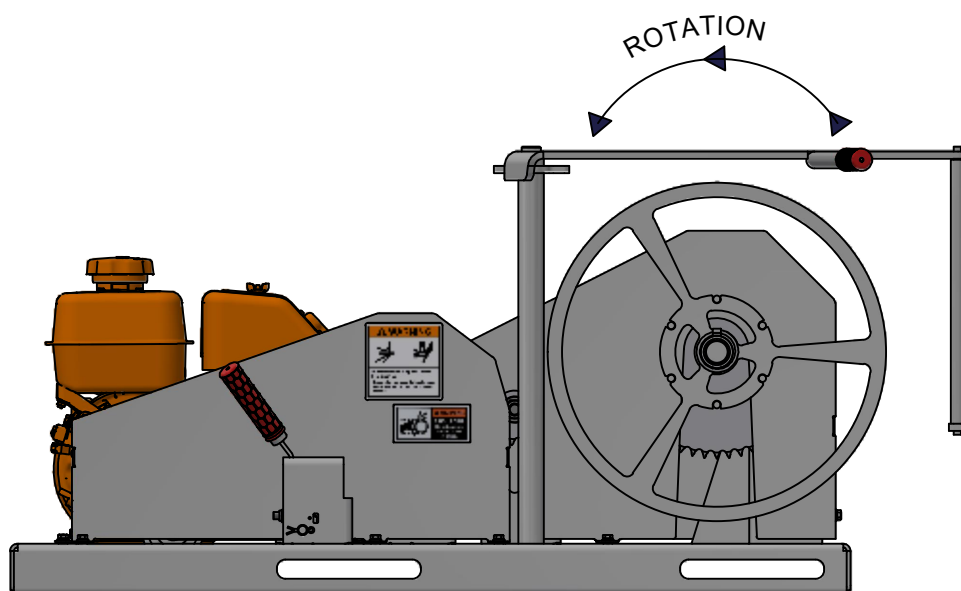
1. START THE WIRE WINDER ENGINE
2. ENGAGE THE WIRE WINDER BY MOVING THE DRIVE HANDLE TOWARDS THE WIRE ROLL AND PLACE THE DRIVE HANDLE INTO THE SLOT TO KEEP THE WIRE WINDER ENGAGED
3. SET THE THROTTLE TO THE DESIRED RPM
4. USE THE WIRE LOADER TO LOAD THE WIRE EVENLY ON THE SPOOL BY MOVING THE LOADER BACK AND FORTH.
5. ONCE THE WIRE IS LOADED, DISENGAGE THE DRIVE HANDLE TO STOP THE WIRE WINDER FROM LOADING WIRE.
6. REDUCE THE RPM ON THE ENGINE AND TURN THE ENGINE OFF.
7. SECURE THE WIRE ON THE SPOOL TO KEEP IT FROM UNSPOOLING.

Minden Machine Shop Inc.
1302 K Road Minden, NE
308-832-0220

WIRE WINDER OPERATION



NO OPERATORS
ARE ALLOWED IN
THE WORKING
AREA OF THE
WIRE WINDER
WHILE IN
OPERATION



WARNING!

DO NOT WEAR LOOSE OBJECTS NEAR THE MACHINE WHILE IN OPERATION. LOOSE OBJECTS CAN BECOME ENTANGLED WITH THE ROTATING WIRE SPOOL AND CAUSE SERIOUS INJURY OR DEATH!



WARNING!

ONLY ONE OPERATOR IS ALLOWED IN THE WORK ZONE! MORE THAN ONE OPERATOR IN THE WORK ZONE CAN LEAD TO ACCIDENTAL CONTACT WITH ROTATING PARTS WHICH COULD LEAD TO SERIOUS INJURY OR DEATH!

Minden Machine Shop Inc.
1302 K Road Minden, NE
308-832-0220

TROUBLESHOOTING
WIRE WINDER 6500

PROBLEM		SOLUTION
Engine won't run		Fuel supply turned on?
		Tank filled with fuel?
		Choke on?
		Air filter clean?
		Spark plug correctly gapped?
		Spark present?
		Oil level full?
		Consult Engine Manual
Wire Winder doesn't turn		Engine running?
		Drive belt engaged?
		Drive belt need replaced?
		Chain correctly tensioned?
		Pulleys and sprockets spinning on shafts?
		Wire spool connected correctly?
Spool shaft not turning true		Inspect bearings for wear, replace if needed
		Shaft bent?

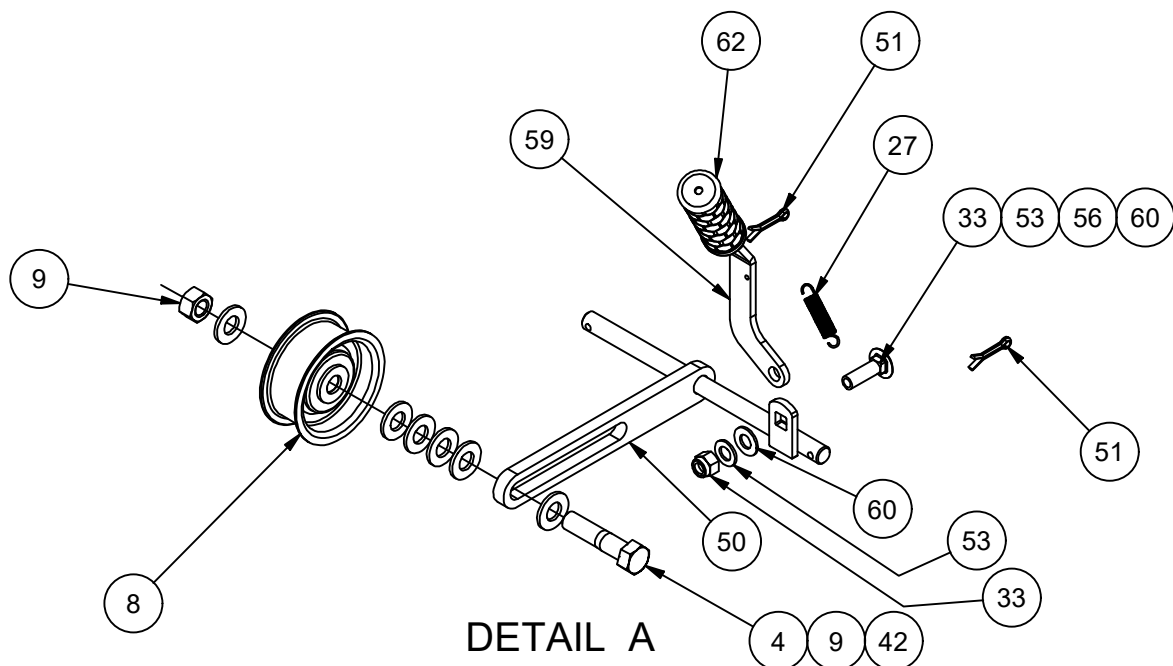
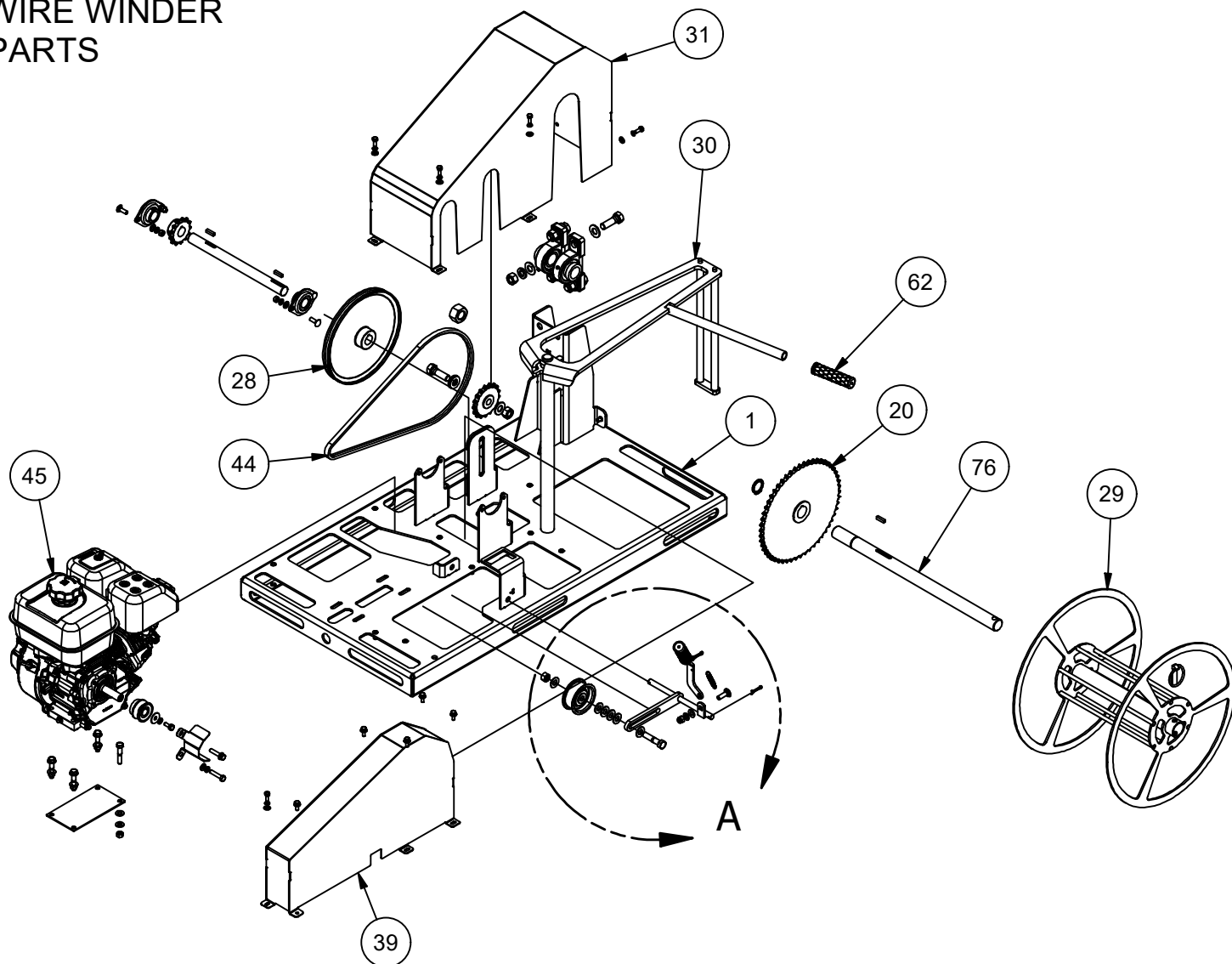
SERVICE AND MAINTENANCE
WIRE WINDER 6500

INSPECT		INTERVAL
Engine		Use manufacturer recommendations from
		owner's manual for lubricants and servicing
Chain		Inspect chain tension before each use
		Lubricate every 40 hours of use
Belt		Inspect before use
		Replace as needed for wear
Bearings		Inspect before season begins
		Lubricate bearings before initial use
		Lubricate bearings before storage
		Lubricate bearings every 80 hours of use

STORAGE
When the wire winder will be stored for an extended period of time, please do the following:
1. Change the motor oil
2. Lubricate the chain
3. Check that the belt is not under tension
4. Grease the bearings
5. Add stabilizers to the fuel supply to keep the fuel from spoiling or drain the system of fuel.
6. Have the wire spool empty of any wire
7. Store the Wire Winder where it will remain dry

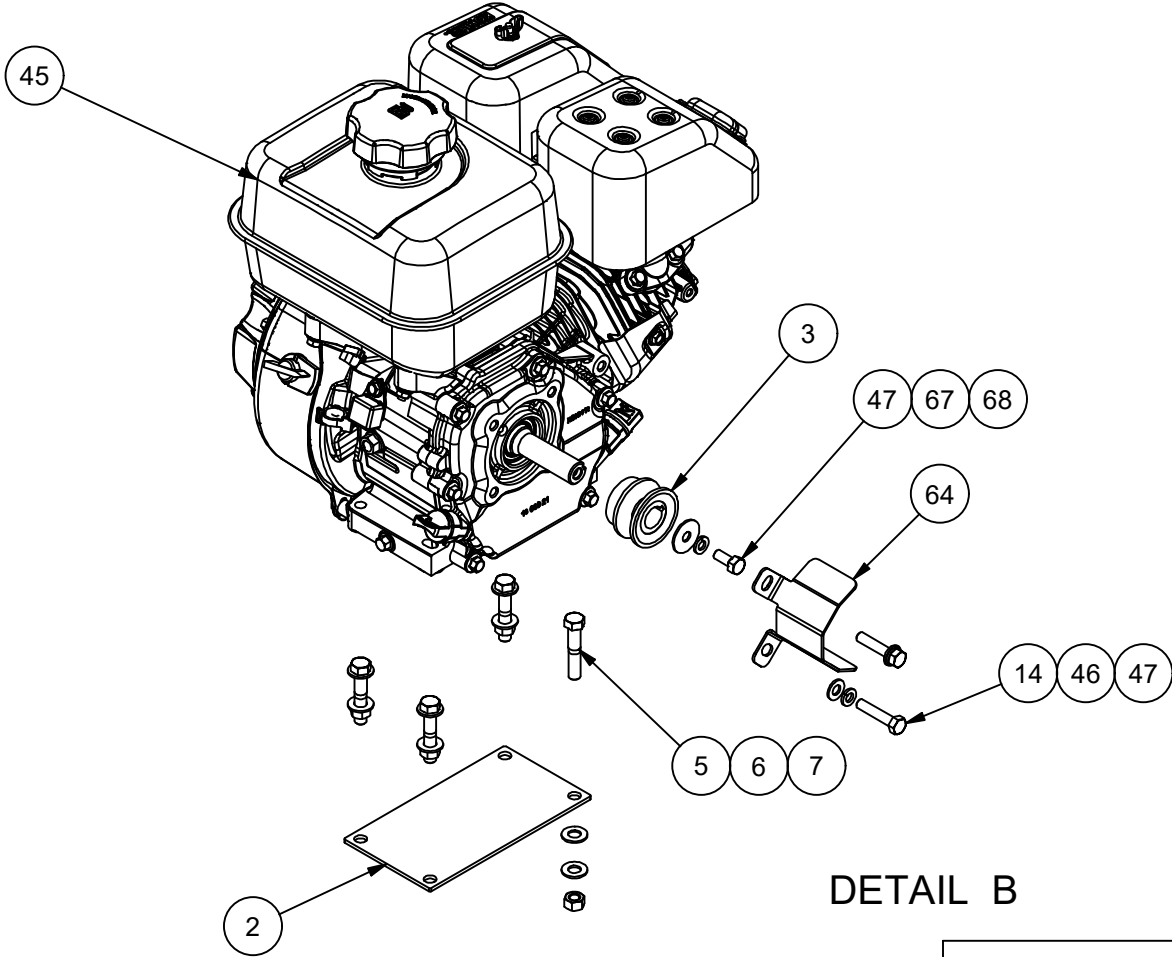
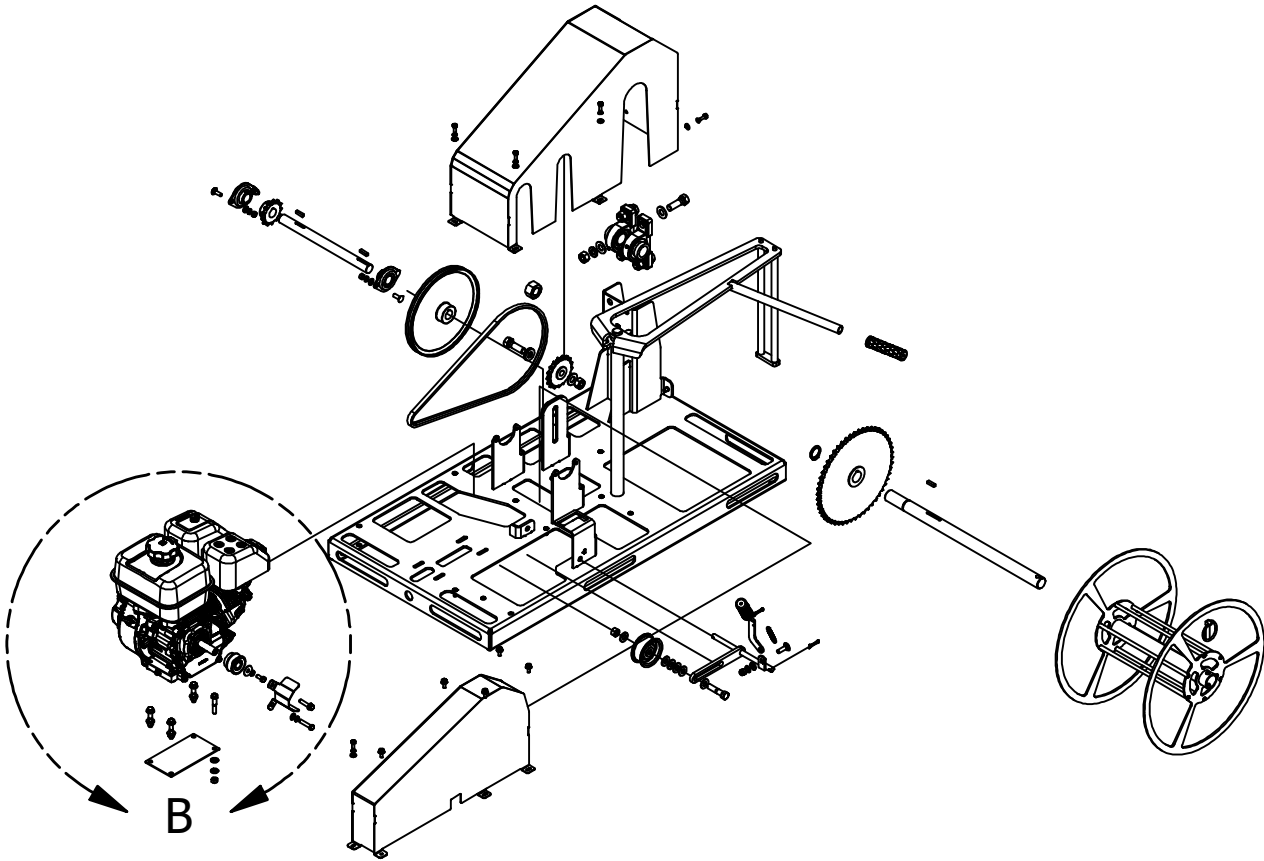
Parts Diagrams

WIRE WINDER PARTS



Minden Machine Shop Inc.
1302 K Road Minden, NE
308-832-0220

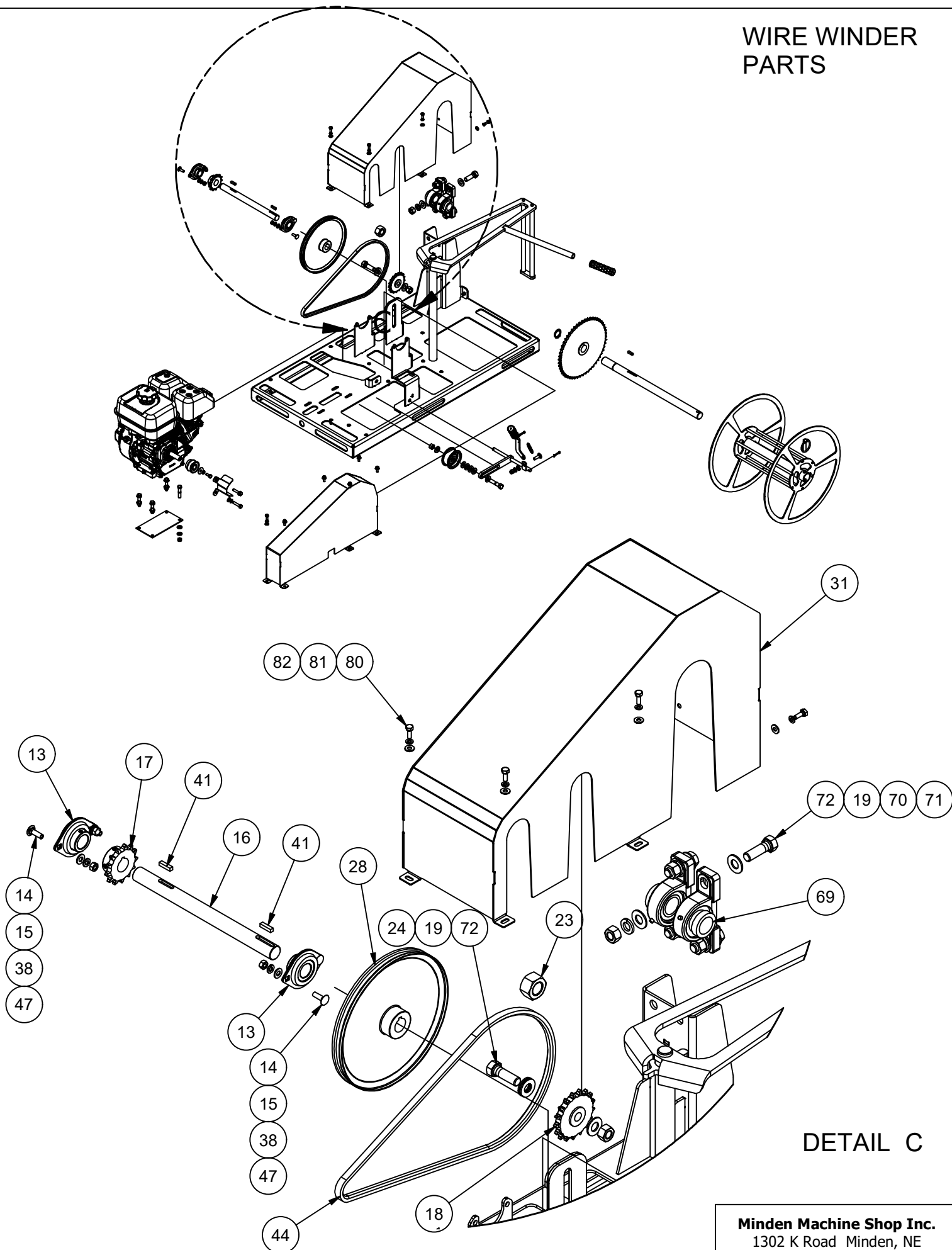
WIRE WINDER PARTS



DETAIL B

Minden Machine Shop Inc.
1302 K Road Minden, NE
308-832-0220

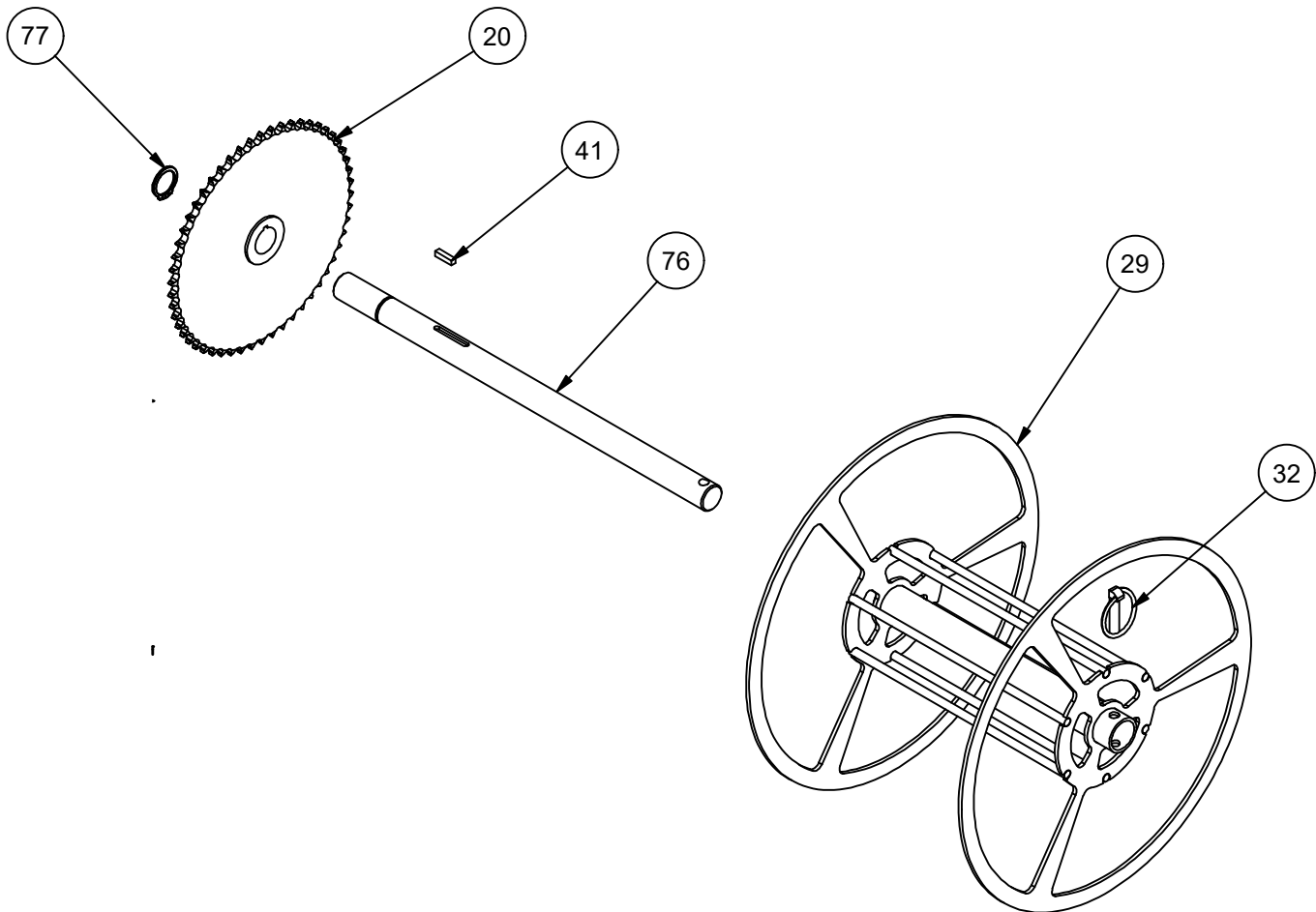
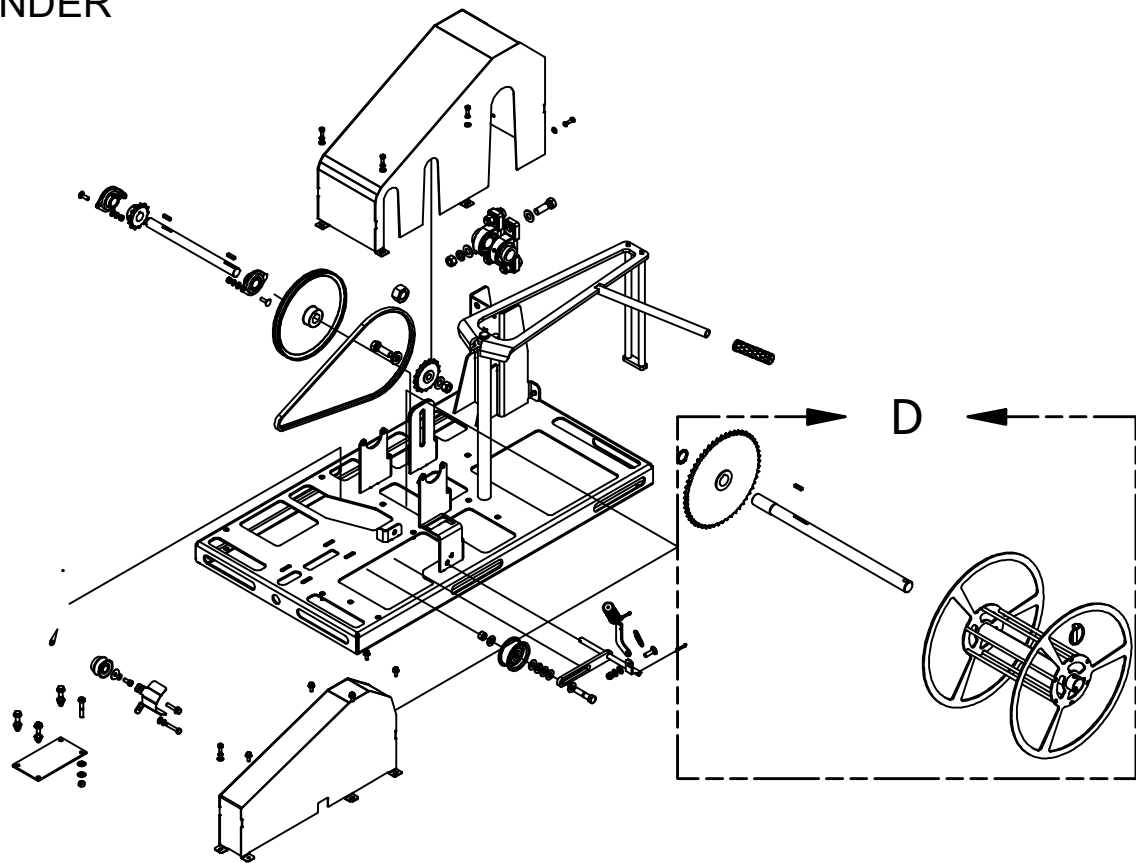
WIRE WINDER PARTS



DETAIL C

Minden Machine Shop Inc.
1302 K Road Minden, NE
308-832-0220

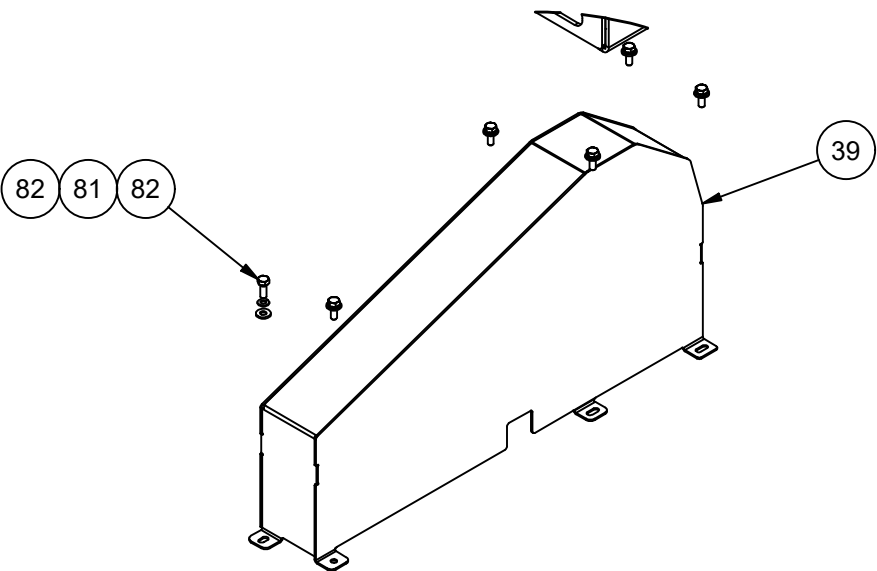
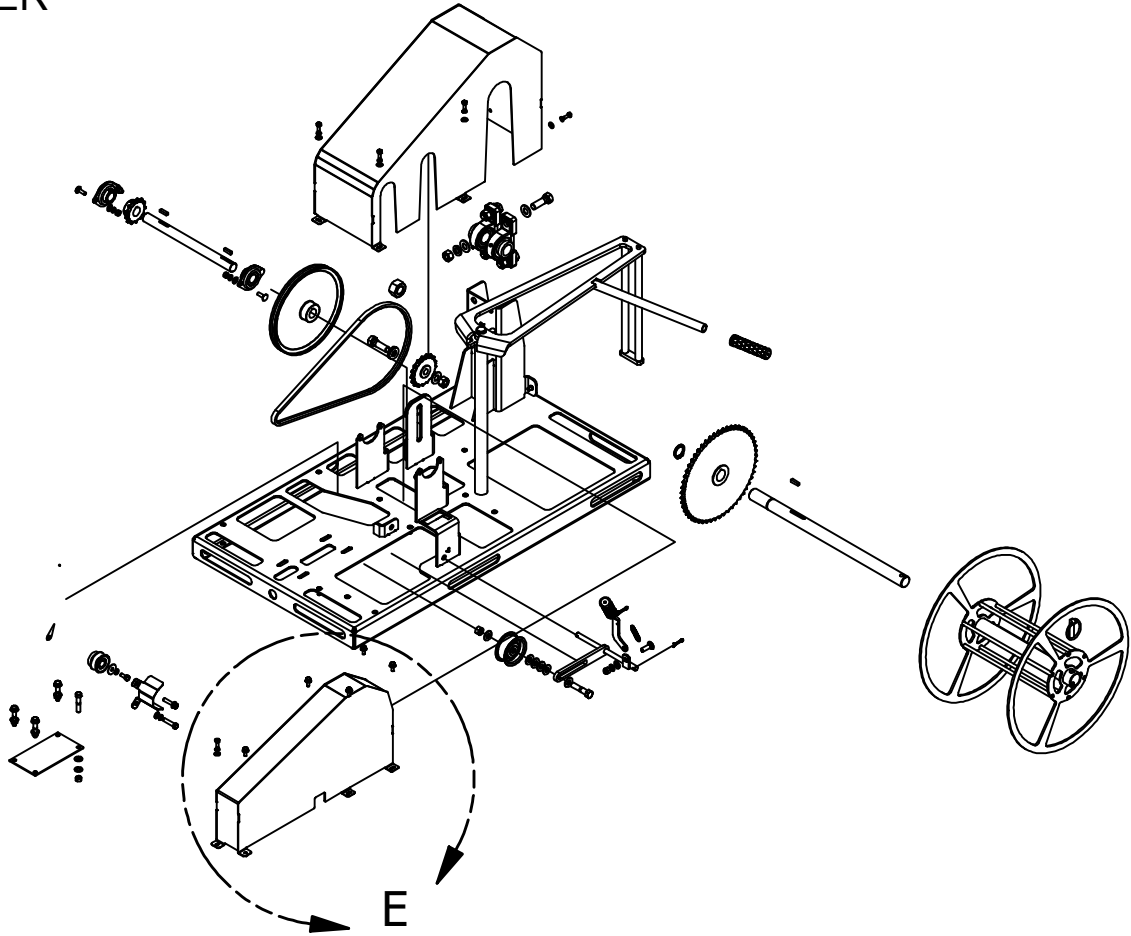
WIRE WINDER
PARTS



DETAIL D

Minden Machine Shop Inc.
1302 K Road Minden, NE
308-832-0220

WIRE WINDER
PARTS



DETAIL E

WIRE WINDER PARTS LIST

Parts List				Parts List			
ITEM	QTY	PART NUMBER	DESCRIPTION	ITEM	QTY	PART NUMBER	DESCRIPTION
1	1	WW-6500-A001	Base Plate Weldment	41	3	CR1906	1/4x1.5" Key/Square
2	1	WW-6500-P035	Baler Belting Engine Isolator	42	1	B1/2X2.25	Hex Bolt
3	1	WW-0-P047	Pulley for Engine Shaft	44	1	S4908	Gates A46 Hi Power II Belt 0.534x47.93
4	7	W1/2F	Plain Washer				
5	8	W3/8F	Plain Washer	45	1	S4650	Kohler Engine 6.5HP
6	4	B3/8X2.0	Hex Bolt	46	2	BM8X40	METRIC HEX BOLT
7	4	N3/8L	Lock Nut	47	7	W5/16L	Lock Washer
8	1	P1003	Idler Pulley for Conveyor	50	1	WW-6500-A006	Pulley Idler Axle Weldment
9	1	N1/2DL	Lock Nut	51	2	HW5/32x1CP	5/32x1 Cotter Pin
13	2	BR910	1' Sealed Bearing with Lock Collar	53	1	W3/8F	Plain Washer
13.1	4	BR915	2 Bolt Stamped Flange for 205 Bearing	56	1	B3/8X1.25CB	Round Head Square Neck Bolt
				59	1	WW-6500-A012	Pulley Tensioner Handle Weldment
14	6	W5/16F	Plain Washer	60	1	W5/16NYL	Nylon Nut
15	4	N5/16DL	Lock Nut	62	2	WW-6500-P046	Rubber Handle Grip
16	1	WW-6500-P003	Axle for Sprocket and Pulley	64	1	WW-6500-P033	Engine Pulley Retainer Plate
17	1	CR1901	#50x1"x13 Tooth Sprocket	67	1	B5/16X0.75	Hex Bolt
18	1	5017 IDLER SPROCKET	Sprocket Idler 17 Toother for No. 50 Chain	68	1	W5/16F	Plain Washer
19	12	W5/8F	Plain Washer	69	2	BR1035	1-1/4" Pillow Block Bearing
20	1	5054 SPROCKET	Sprocket 54 Tooth for No. 50 Chain	70	4	W5/8L	Lock Washer
				71	4	N5/8N	Hex Nut
23	1	N1DL	Lock Nut	72	5	B5/8X2.0	Hex Bolt
24	1	N5/8DL	Lock Nut	76	1	WW-6500-P057	Axle for 54 Tooth Sprocket and Spool
27	1	SP4016	Spring for Handles 9432K48				
28	1	P1070	10" Weld-A-Pulley	77	1	S2035	1-1/4" External Snap Ring
28.1	1	H1101	1" "W" Weld-A-Hub	79	11	N1/4RN	1/4" Rivet Nut
29	1	WW-6500-A009	Spool Weldment	80	11	W1/4F	Plain Washer
30	1	WW-6500-A008	Spool Guide Weldment	81	11	W1/4L	Lock Washer
31	1	WW-6500-A015	Chain Cover Weldment	82	11	B1/4X0.75	Hex Bolt
32	1		3/8 x 1 3/4 Lynch Pin	83	4	RC #50	#50 Chain 4 Foot
33	1	N3/8NYL	3/8 Std NC Nylock Nut	84	1	RC #50 Conn	#50 Connecting Link
38	4	B5/16X1.0CB	Round Head Square Neck Bolt	85	1	ST-CP-P0248	7mm x 1-1/4" Step Key
39	1	WW-6500-A004	Pulley Cover Weldment				

Minden Machine Shop Inc.
1302 K Road Minden, NE
308-832-0220

California Proposition 65

The Safe Drinking Water and Toxic Enforcement Act of 1986 (California Proposition 65, commonly known as Prop 65) applies to companies doing business in the State of California. The regulation is administered by the Office of Environmental Health Hazard Assessment (OEHHA) and mandates that no person in the course of doing business shall knowingly expose any individual to a chemical known to the State of California to cause cancer and/or reproductive toxicity without first giving clear and reasonable warning to individuals. If the business can prove that the exposure level poses no significant risk to the end consumer no warning is necessary.

Minden Machine Shop, Inc. is providing the information below to educate about the chemicals that are or could be found in the products that Minden Machine Shop, Inc. produces or uses in their products.

Material	Chemical	CAS #	Cancer, Reproductive Harm or Both?
Cast Iron	Nickel	7440-02-0	Cancer
	Arsenic	7440-38-2	Both
	Cobalt	7440-48-4	Cancer
	Lead	7439-92-1	Both
Steel	Nickel	7440-02-0	Cancer
Stainless Steel	Nickel	7440-02-0	Cancer
Paint Finishes	Carbon Black	1333-86-4	Cancer
	Toluene	108-88-3	Reproductive Harm
	Lead	7439-92-1	Both
Rubber Compounds	Acrylonitrile	107-13-1	Cancer
	Butadiene	106-99-0	Both
	DEHP	117-81-7	Both
EPDM	Carbon Black	1333-86-4	Cancer
Petroleum	Cadmium	-----	Both
Petroleum	Isoprene	78-79-5	Cancer

Additional information on Proposition 65 can be obtained by visiting the State of California's Proposition 65 website:

<https://oehha.ca.gov/proposition-65/about-proposition-65>

Summary of Proposition 65 requirements:

<https://oehha.ca.gov/proposition-65/general-info/proposition-65-plain-language>

Clear and reasonable notice requirements:

<https://oehha.ca.gov/proposition-65/crn/notice-adoption-article-6-clear-and-reasonable-warnings>

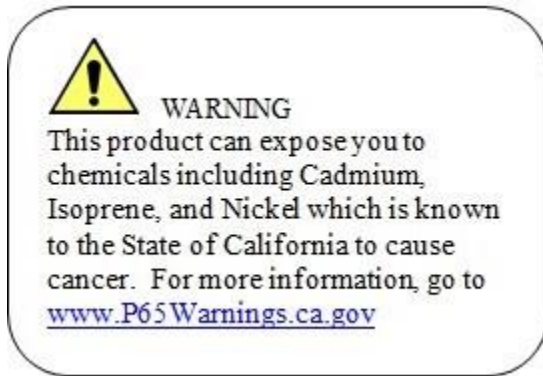
Chemicals and substances regulated by Proposition 65:

<https://oehha.ca.gov/proposition-65/proposition-65-list>

Proposition 65 Laws and Regulations:

<https://oehha.ca.gov/proposition-65/law/proposition-65-law-and-regulations>

Minden Machine Shop, Inc. has placed this decal on our products to alert the user to the possible exposures.



Minden Machine Shop Inc

LIMITED WARRANTY

Minden Machine Shop Inc warrants all products manufactured by it to be free of defect in material and workmanship for a period of one (1) year from the date of purchase.

This Minden Machine Shop Inc. warranty does not cover:

1. Parts and accessories supplied by Minden Machine Shop Inc. but manufactured by others. Minden Machine Shop Inc. will facilitate the other manufacturer warranty for the benefit of the purchaser but will not be bound thereby (example: augers, motors, trailers, tanks, etc.).
2. Products that have been altered by anyone other than a Minden Machine Shop Inc. employee or are used by the purchaser, for purposes other than what was intended at time of manufacture or used in excess of the "built specifications".
3. Products that are custom manufactured by Minden Machine Shop Inc. utilizing the purchaser's design which deviates from Minden Machine Shop Inc. normal production line manufactured or customized features of the products.
4. Malfunctions or damages to the product from misuse, negligence, customer alteration, accidents or product abuse due to incoming material or poor material flow ability or lack of required performance or required maintenance (e.g., poor material flow ability caused by incoming wet fertilizer or hot soybean meal, etc).
5. Loss of time, inconvenience, loss of material, down time or any other consequential damage.
6. Product use for a function that is different than designed intent (e.g., storing soybean meal in grain bin, unacceptable material in the bin such as hot bean meal when product originally designed for other application, etc).
7. Minden Machine Shop Inc is not responsible for any equipment that this product is attached to or mounted on.

To activate this warranty, the purchaser must make contact in writing with Minden Machine Shop Inc. within one (1) year of date of purchase. After contact, Minden Machine Shop Inc. has the right to determine the cause and qualify the legitimacy of the claim. Minden Machine Shop Inc., upon acceptance of a warranty claim, shall have a reasonable time to plan any repair or replacement and may affect repair or replacement out of its factory or through contract with a local repair service. If a purchaser after warranty notice is made, chooses to make the repair itself, Minden Machine Shop Inc. must approve any expenses before they are incurred to be responsible for customer reimbursement. Minden Machine Shop Inc. shall be liable on a warranty claim for repair or replacement of any defective products and this is the purchaser's sole and exclusive remedy. Minden Machine Shop Inc. will not be liable for any other or further remedy including claims for personal injury, property damage or consequential damage. The law of the State of Nebraska shall govern and any such claim and any issues with regard to the same shall be resolved in the Nebraska District Court for the county of Kearney.

RETURN OF MERCHANDISE

Merchandise may not be returned without written approval from the factory. All returns must have a return authorization number. Obtain this number before the return and show it on all return items. A 15% restocking charge is made on merchandise returned. Returned merchandise must be shipped pre-paid.

RECEIVING MERCHANDISE AND FILING CLAIMS

When receiving merchandise it is important to check both the number of parts and their description with packing slip. The consignee must make all claims for freight damage or shortage within 10 days from the date of delivery.

When the material leaves the factory it becomes the property of the consignee. It is the responsibility of the consignee to file a claim on any possible damage or loss. Please list your preferred routing on purchase orders.

MODIFICATIONS

It is the policy of Minden Machine Shop Inc. to improve its products whenever possible and practical to do so. We reserve the right to make changes, improvements and modifications at any time without incurring the obligation to make such changes, improvements and modifications on any equipment sold previously.

WARRANTY REGISTRATION

To register equipment, or file a claim, copy and paste the words on this page into an email or word document, fill out the appropriate information completely, and email it to larry@mindenmachine.com with the subject as EQUIPMENT WARRANTY, or fill it out and fax it to 308-832-1340.

Dealer Information: Not Applicable, check here: []

Dealer Name:

Address:

City:

State:

Zip Code:

Phone #:

Email:

End User Information:

Purchaser:

Address:

City:

State:

Zip Code:

Phone #:

Email:

Equipment:

Serial #:

Date Of Purchase: / /