

PATRIOT™

Patriot Pathfinder™

**Nurse Trailer
Owner's Manual**



**Manufactured by
Minden Machine Shop Inc.
1302 K Road
Minden NE 68959
308-832-0220**

Table Of Contents

<u>Topic</u>	<u>Page Number</u>
Introduction	3
Safety and Operation Rules	4
Transporting	9
Troubleshooting	12
Storage	12
Trailer Decals	13
Attaching Front Hitch	16
Machine Measurements	17
Dimensions	18
Lubrication	19
Parts Diagrams	21
Warranty	38

INTRODUCTION

Purpose:

The Patriot Pathfinder nurse tank trailer serves as a bulk liquid delivery system for your planter or other bulk liquid application systems.

Features:

1. Frame – Rugged built and designed to cradle tank.
2. Telescoping tongue - A telescoping tongue that allows easy hook up.
3. Pathfinder Design – This allows the trailer to follow the row behind the implement.
4. Transport Mode – This design allows the transport of the trailer at speeds up to 25 MPH
5. Field Mode – Allows for both axles to turn enabling the trailer to follow in a more precise manner.

Thank you for choosing the Patriot Pathfinder Trailer. This manual covers the operation and maintenance of the Patriot Pathfinder Trailer. All information in this manual is based on the latest production information available at the time of printing. For the latest version of this catalog please call 1-800-264-6587 or visit www.patriotequip.com and download the latest version.

Minden Machine Shop Inc. reserves the right to make changes at any time without notice and without incurring any obligation. Please become familiar with all safety, operating, maintenance and troubleshooting information. This will ensure your safety and long life for the system.

SAFETY AND OPERATION RULES

GENERAL SAFETY STATEMENTS

Safety precautions are essential when the use of any mechanical equipment is involved. These precautions are necessary when using, storing, and servicing mechanical equipment. Using this equipment with the respect and caution demanded will considerably lessen the possibilities of personal injury. If safety precautions are overlooked or ignored, personal injury or property damage may occur.

This unit is for specific applications. It should not be modified or/and used for any application other than which it was designed. If there are any questions regarding its application, write or call Minden Machine Shop, Inc for more information, at 1-800-264-6587. Do not use this unit until you have been advised.

Read this entire manual carefully - know your equipment. Consider the application, limitations, and the potential hazards specific to your unit. Occupational safety is of prime concern to us. This manual was written with the safety of the operator and others who come in contact with the equipment as our prime concern. The manual presents some of the day-to-day work problems encountered by the operator and other personnel. We wrote this manual to help you understand safe operating procedures for Patriot Pathfinder Trailers. We want you as our partner in safety. A copy of this manual should be available to all persons who may operate this machine.

It is your responsibility as an owner or operator or supervisor to know what specific requirements, precautions and work hazards exist and to make these known to all other personnel working with the equipment or in the area, so that they too may take any necessary safety precautions that may be required. Avoid any alterations of the equipment. Such alterations may create a dangerous situation where serious injury or death may occur.

Why is SAFETY important to you?

3 BIG REASONS

1	Accidents disable and kill
2	Accidents cost money
3	Accidents can be avoided

Signal Words

Note the use of the signal words **DANGER**, **WARNING** and **CAUTION** with safety messages. The appropriate signal word for each message has been selected using the following guidelines:

DANGER – An immediate and specific hazard, which will result in severe personal injury or death if proper precautions are not taken.

WARNING – A specific hazard or unsafe practice, which could result in severe personal injury or death if proper precautions are not taken.

CAUTION – Unsafe practices which could result in personal injury if proper precautions are not taken, or a reminder of good safety practices.

SAFETY ALERT SYMBOL



The symbol shown above is used to call your attention to instructions concerning your personal safety. Watch this symbol - it points out important safety precautions. It means ATTENTION! BECOME ALERT! Your personal safety is involved! Read the message that follows and be alert to the possibility of personal injury or death.

Anyone who will operate or work around a Patriot Pathfinder Trailer shall first read this manual! This manual is to be delivered with the equipment to its owner. Failure to read this manual and its safety instructions is a misuse of equipment.

SAFETY EQUIPMENT

Please, remember safety equipment provides important protection for persons working around a machine that is in operation. Be sure ALL safety shields and protective devices are installed and properly maintained. If you find any shields or guards damaged or missing, contact Minden Machine Shop Inc. for the correct items.

SERIAL NUMBER

To ensure efficient and prompt service, please furnish us with the model and serial number of your Patriot Pathfinder Trailer in all correspondence or other contact. The Serial Number is located on the left side near the tongue.

LIGHTING AND MARKING

It is the responsibility of the customer to know the lighting and marking requirements of the local highway authorities and to install and maintain the equipment to provide compliance with the regulations. You may need to add extra lights when transporting at night or during periods of limited visibility.

SAFETY OVERVIEW

YOU are responsible for the SAFE operation and maintenance of your Patriot Pathfinder Trailer.

YOU must ensure that you and anyone who will operate, maintain, or work around the Patriot Pathfinder Trailer must be familiar with the operating, maintenance, and safety information contained in the manual. This manual will take you step by step through your working day and alert you to all good safety practices while operating the trailer.

Remember YOU are the key to safety. GOOD PRACTICES protect not only you but also the people around you. Make these practices a working part of your safety program. Be certain EVERYONE operating this machine is familiar with the procedures recommended and follows safety precautions. Remember, most accidents can be prevented. Do not risk injury or death by ignoring any information addressed.

Pathfinder Trailer owners must give operating instructions to operators before allowing them to operate the trailer. They must be reviewed at least annually thereafter per OSHA regulation 1928.57.

The most important safety device on the equipment is a SAFE OPERATOR. It is the operator's responsibility to read and understand ALL instructions in the manual and to follow them. All accidents can be avoided!

Any person who has not read and understood all operation and safety instructions is not qualified to operate the Patriot Pathfinder Trailer. An untrained operator exposes himself and bystanders to possible serious injury or death.

Do not modify the equipment in any way. Unauthorized modifications may impair the functions and/or safety and could affect the life of the equipment.

SAFETY AFFIRMATION

1. I have read and understand the operator's manual and all safety signs before operation, maintenance or use of the Patriot Pathfinder.
2. I will allow only trained persons to operate the Patriot Pathfinder Trailer. *An untrained operator is not qualified to operate this equipment.
3. I have access to a fire extinguisher.
4. I have all guards in place and will not operate the Patriot Pathfinder Trailer without them.
5. I will not allow riders on the Patriot Pathfinder Trailer.
6. I understand the danger of moving parts (PTO, and pinch points) and will stop engine before servicing.
7. I recognize the danger of coming in contact with power lines.
8. I am aware of the need to secure the Patriot Pathfinder tank to its trailer.
9. I understand the danger of working with bulk liquids.
10. I understand that any accidents that occur with the Patriot Pathfinder Trailer are my responsibilities.
11. I understand that Minden Machine Shop will not be held responsible of any accidents that involve the Patriot Pathfinder Trailer.

SIGN OFF SHEET (this must be signed annually as part of your safety program)

As a requirement of OSHA, it is necessary for the employer to train the employee in the safe operation and safety procedures with this Patriot Pathfinder Trailer. We include this sign off sheet for you convenience and personal record keeping.

DATE	EMPLOYER SIGNATURE	EMPLOYEE SIGNATURE



DANGER

SAFETY PROCEDURES

1. Use only proper pumping systems when using this trailer.
2. Use only proper pulling equipment with this trailer
3. Do not use makeshift systems to pull or fill this trailer.
4. Do not attempt to raise the Patriot Pathfinder Trailer unit by hoist or forklift when it is loaded with product.
5. Check and tighten all necessary bolts and tank straps. Carrying the tank loose could cause an accident.
6. Do not park your Patriot Pathfinder Trailer on an incline or leave your machine running unattended.
7. Do not operate unit without safety devices and signs in place.
8. Do not allow any riders on the Patriot Pathfinder Trailer.
9. Do not enter the tank at any time, as serious injury may occur.
10. In case of any defect or awareness of potential danger, please contact Minden Machine Shop, Inc. at 1-800-264-6587 immediately.



OPERATOR QUALIFICATIONS

Operation of this Patriot Pathfinder Trailer shall be limited to competent and experienced persons. In addition, anyone who will operate or work around a Patriot Pathfinder Trailer must use good common sense. In order to be qualified, they must also know and meet all other requirements, such as:

1. Some regulations specify that no one under the age of 18 may operate power machinery. This includes Patriot Pathfinder Trailers. It is your responsibility to know what these regulations are in your own area or situation.
2. Current OSHA regulations state in part: "At the time of initial assignment and at least annually thereafter, the employer shall instruct every employee or user in the safe operation and servicing of all equipment with which the employee or user is, or will be involved."
3. Unqualified persons are to stay out of the work area as shown in the work diagrams.
4. A person who has not read and understood all operating and safety instruction is not qualified to operate the machine.

SAFETY DECALS

1. Keep safety decals clear and legible at all times.
2. Replace decals and signs that are missing or have become unreadable.
3. Safety signs are available from your Dealer or the Manufacture.

How to install Safety Decals

1. Be sure that the installation area is clean and dry.
2. Decide on the exact position before you remove the backing paper.
3. Align the decal over the specified area and carefully press the small portion with the exposed sticky backing in place.
4. Slowly peel back the remaining paper and carefully smooth the remaining portion of the decal in place.
5. Small air pockets can be pierced with a pin and smoothed out using a piece of decal backing paper.

DESIGNATED WORK AREA



WARNING

WORK AREA DIAGRAM

Before filling/using the Patriot Pathfinder Trailer, a designated work area should be established. The work area should be a perimeter in which no persons should be allowed that are not directly involved in the operation of the Patriot Pathfinder Trailer. Also, all persons in the work area must have read and understood this manual.



WARNING

RULES FOR SAFE WORK AREA

Under no circumstances should persons not involved in the operation be allowed to trespass into the work area. It shall be the duty of all operators to see that children and/or other persons stay out of the work area! Trespassing into the work area by anyone not involved in the actual operation, or trespassing into a hazard area by anyone, shall result in immediate shut down by the operator.

It shall be the responsibility of all operators to see that the work area has secure footing, is clean and free of all debris, and tools, which might cause tripping and/or falling. It shall also be their responsibility to keep the work area clean and orderly during the operation.

OPERATING PROCEDURES



WARNING

MACHINE INSPECTION

After delivery of your new Patriot Pathfinder Trailer and/or completion of assembly, before each use, inspection of the machine is mandatory. This inspection should include, but not be limited to:

1. Check to see that all guards are in place, secured and functional.
2. Are all fasteners tight?
3. Check all grease points and make sure they have sufficient grease.
4. Check the tires for proper inflation.
5. Inspect that the tires/rims are secured to the hubs.
6. Inspect the safety chains.
7. Is the connecting pin to the implement the correct size and in good condition?
8. Check that the tank bands are tightened correctly.
9. Inspect any additional plumbing that it is secured and not leaking.
10. Pull pin is secured in place with retaining pin.
11. Safety chains are securely attached to the pulling implement
12. Working in the field, is the Pathfinder trailer in field mode?
13. Transporting the Pathfinder on a road, is it in transport mode?
14. All pins are secured.

TRANSPORTING THE PATRIOT PATHFINDER TRAILER



DANGER

Before transporting the Patriot Pathfinder, the trailer must be put into transport mode. Failure to put the Pathfinder trailer into transport mode will result in loss of control of trailer resulting in injury or death. Do not transport Patriot Pathfinder Trailer at speeds in excess of 25 MPH and comply with your state and local regulations governing marking, towing and maximum width. Observe safe driving and operation practices.



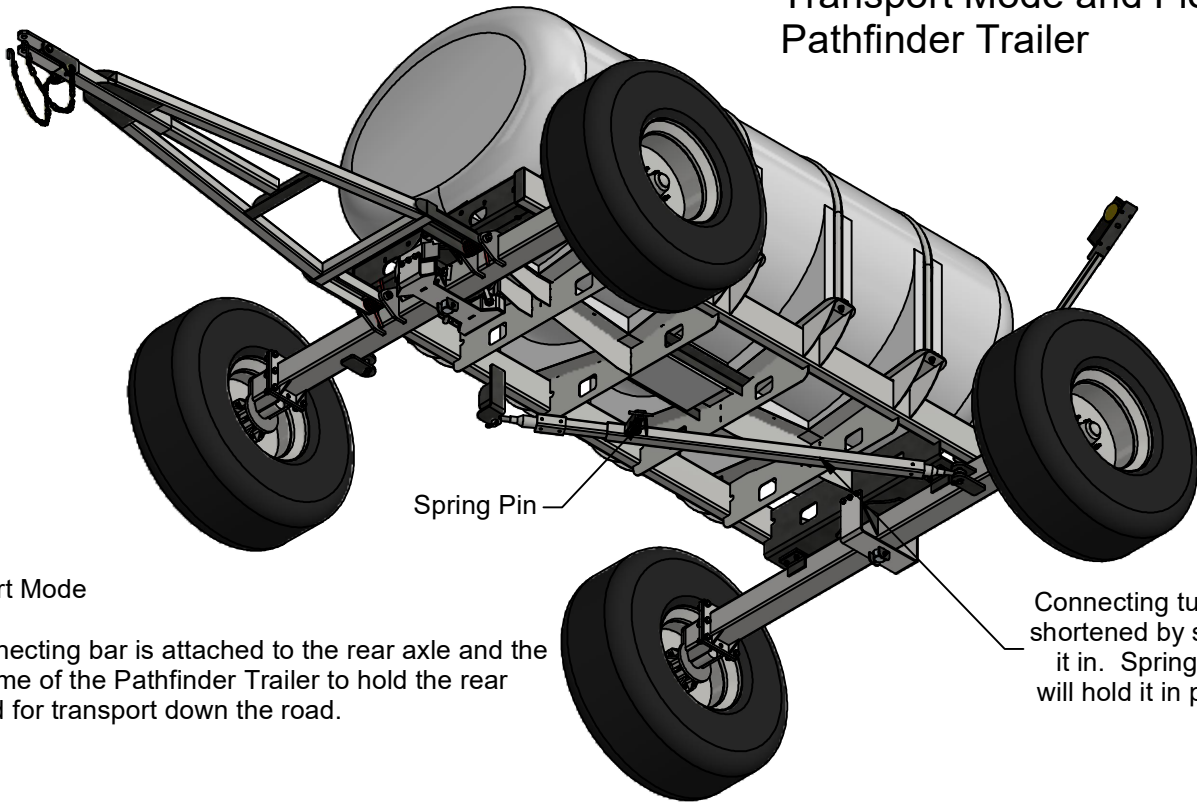
DANGER

Be alert to overhead obstructions and electrical wires. Failure to do so may result in electrocution. Maintain at least ten (10) feet of clearance. See chart showing the height and width of your trailer.

HIGHWAY AND TRANSPORT OPERATIONS

1. Pathfinder Trailer must be put correctly into transport mode before operating on a public roadway.
2. Always drive at a safe speed relative to local conditions and ensure that your speed is low enough for an emergency stop to be safe and secure. Keep speed to a minimum.
3. Reduce speed prior to turns to avoid the risk of overturning.
4. Avoid sudden uphill turns on steep slopes.
5. Always keep towing vehicle in gear to provide engine braking when going downhill. Do not coast.
6. Do not drink and drive.
7. Comply with state and local laws governing highway safety and movement of farm machinery on public roads.
8. Use approved accessory lighting, flags, and necessary warning devices to protect operators of other vehicles on the highway during daylight and nighttime transport.
9. The use of flashing amber lights is acceptable in most localities. However, some localities prohibit their use. Local laws should be checked for all highway lighting and marking requirements.
10. When driving the equipment on the road or highway under 20 MPH at night or during the day, use flashing amber warning lights and slow moving vehicle (SMV) identification emblem.
11. Plan your route to avoid heavy traffic.
12. Be a safe and courteous driver. Always yield to oncoming traffic in all situations, including narrow bridges, intersections, etc.
13. Be observant of bridge load ratings. Do not cross bridges rated lower than the gross weight at which you are operating.
14. Watch for obstructions overhead and to the side while transporting.
15. Always operate equipment in a position to provide maximum visibility at all times. Make allowances for increased length and weight of the equipment when making turns, stopping the unit, etc.

Transport Mode and Field Mode Pathfinder Trailer

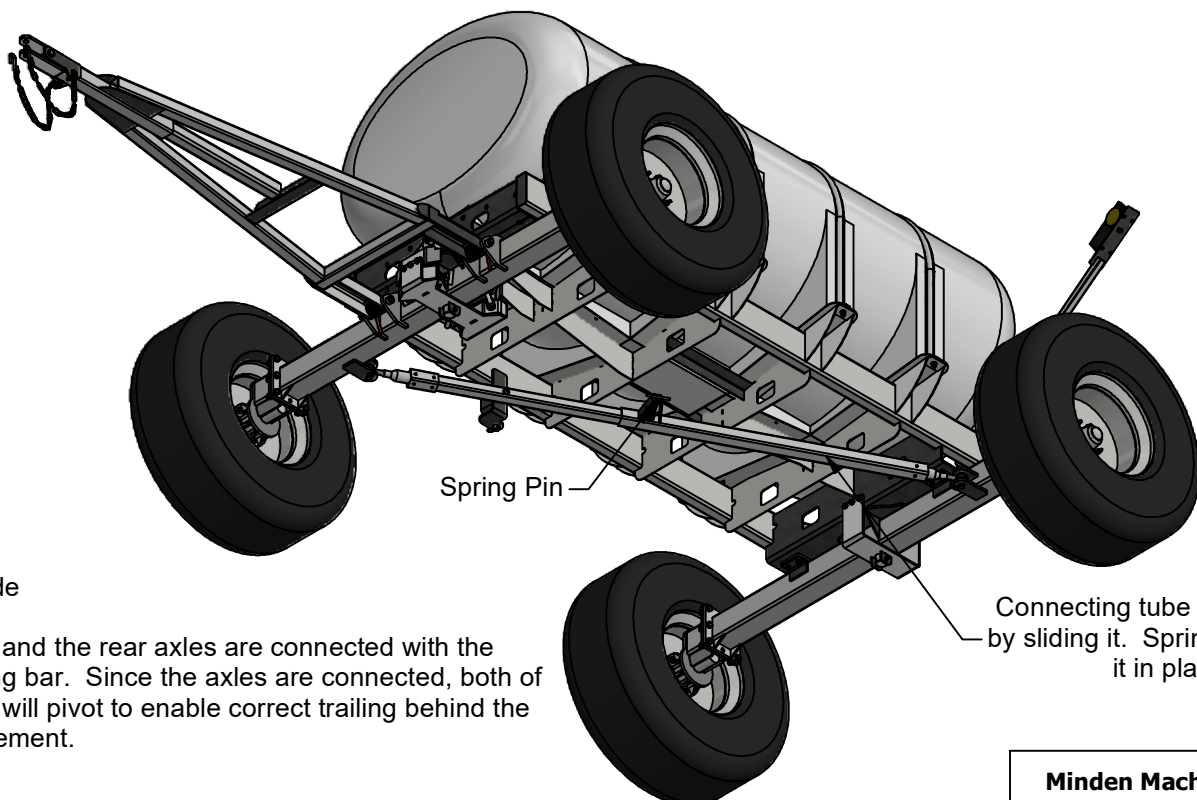


Transport Mode

The connecting bar is attached to the rear axle and the main frame of the Pathfinder Trailer to hold the rear axle rigid for transport down the road.

Connecting tube is shortened by sliding it in. Spring pin will hold it in place.

The length of the connecting tube is adjusted for each of the modes. To adjust to transport mode, remove the connecting pin in the front axle that holds the connecting tube, pull the spring pin out, which will release it. The tube is shortened until the hole aligns with the spring pin causing the pin to snap back into place. Place the connecting pin into the frame mount and connecting tube, put in retaining clip. Check to make sure all pins are secure and the spring pin is fully engaged into the tube. To adjust to field mode, remove the connecting pin from the frame mount and connecting tube. Pull the spring pin out, adjust the connecting tube to make it longer until the spring pin snaps back into place in the predrilled hole. Place the connecting tube into the front axle mount and put the connecting pin in and retain with clip. Check to make sure all pins are secure and the spring pin is fully engaged.



Field Mode

The front and the rear axles are connected with the connecting bar. Since the axles are connected, both of the axles will pivot to enable correct trailing behind the field implement.

Connecting tube is lengthened by sliding it. Spring pin will hold it in place.

Minden Machine Shop Inc.
1302 K Road Minden, NE
308-832-0220

Trouble Shooting

Symptom	Diagnosis	Correction
Pathfinder tracks poorly in the field	Are the axles square to each other? Is the Pathfinder in field mode? Is the tow vehicle hitch centered on the row? Low tire pressure?	Adjust connecting rod to square the axles. Place the Pathfinder in field mode. Adjust tow vehicle hitch to center. Check air pressure and adjust accordingly.
Pathfinder not tracking in road transport	Is the Pathfinder in transport mode? Is a tire low on air pressure? Is the rear axle square to the trailer?	Put in transport mode Check air pressure and adjust accordingly. Adjust connecting rod to square the axle to the trailer

Storage

To store the Pathfinder Trailer:

1. Rinse the tank/tanks out with water and dispose of the wastewater in accordance with the local code
2. Remove all liquids from the tank/tanks, hoses, valves, pumps and etc. to prevent any damage from freezing.
3. Wash the trailer off to remove dirt/debris
4. Remove excess grease
5. Grease all grease points
6. Use touch up paint to paint any bare metal areas
7. Store the Pathfinder Trailer in an area away from high traffic areas
8. Do not allow anyone to climb on or play on the Pathfinder Trailer
9. Inspect all pivot points and pins for wear, replace as needed.
10. Inspect safety chains and hitch for any excessive wear

Optional Equipment

A plumbing kit can be purchased with the Pathfinder Trailer. However, Patriot Equipment realizes that each end user will plumb the Pathfinder Trailer in the way that works best for their individual operation. Be sure to route the hoses out of the way and have them secured properly. The hoses need to be correctly sized for the size of pump the operator will be using.

Pathfinder Trailer Decals



TS2003



TS2012



TS2017



TS2004



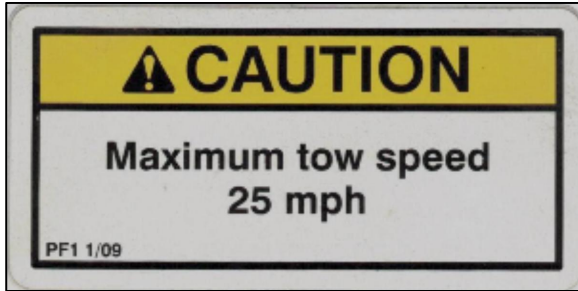
TS2013



TS2001 White

Minden Machine Shop Inc.
 1302 K Road Minden, NE
 308-832-0220

Pathfinder Trailer Decals



TS7000



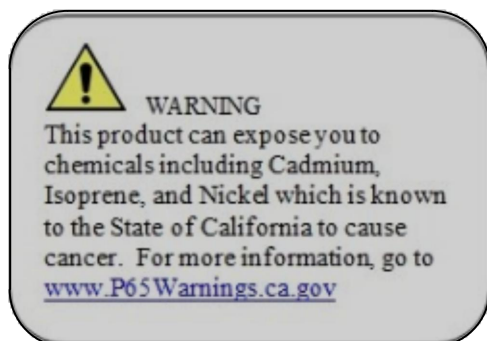
TS7001



TS7003



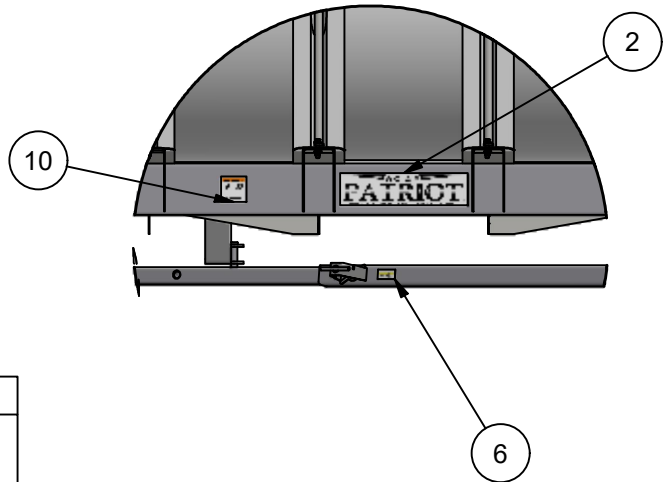
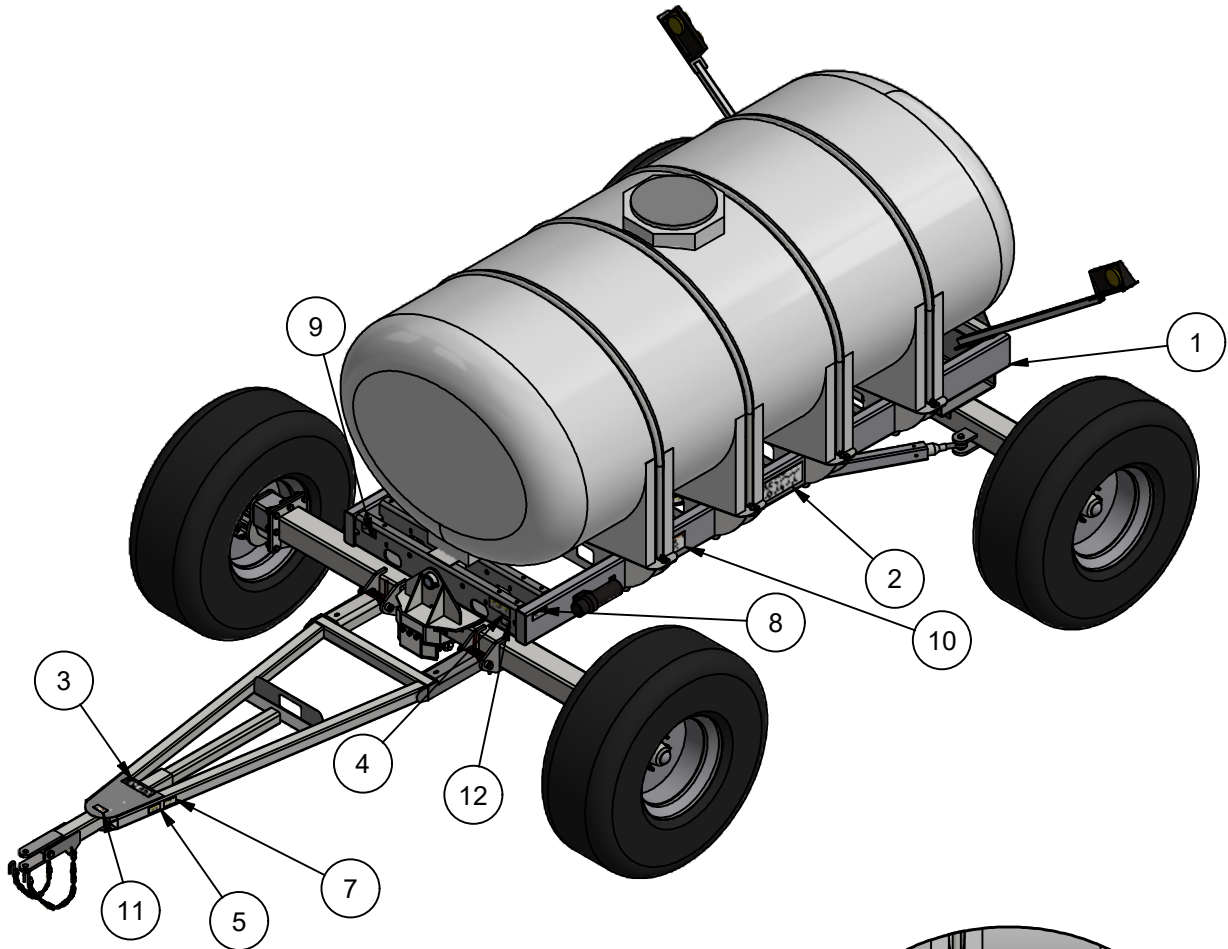
TS7004



P65 California

Minden Machine Shop Inc.
1302 K Road Minden, NE
308-832-0220

Pathfinder Decal Placement

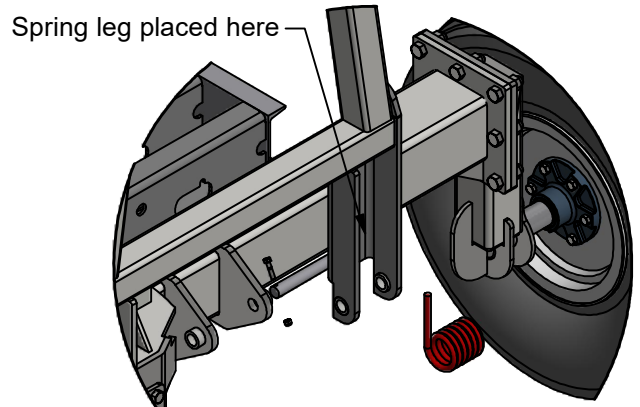
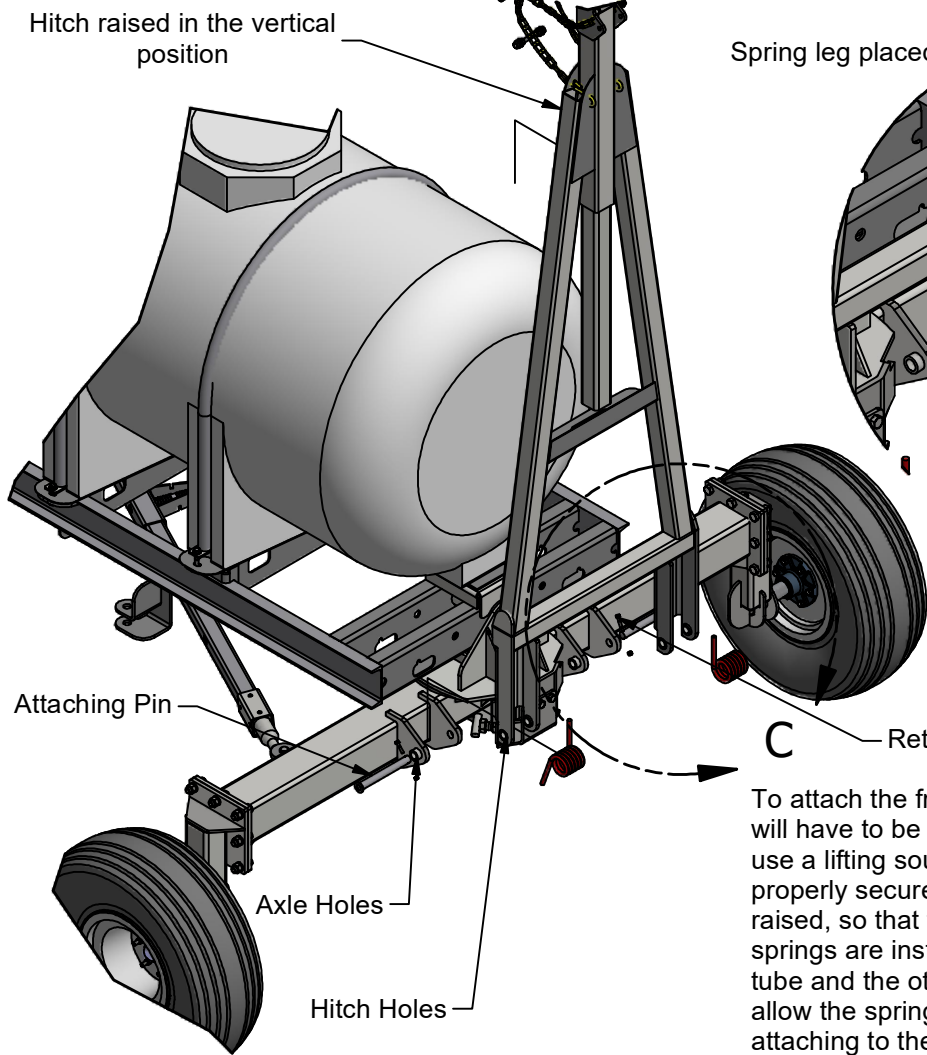


Parts List

ITEM	QTY	PART NUMBER	DESCRIPTION
1	1	PF-1600	1600 Gallon Pathfinder Assembly
2	2	TS2001 White	Patriot Decal 20"
3	1	TS2004	Patriot Decal 8"
4	1	TS7004	General Caution
5	1	TS7001	Hitch Capacity
6	1	TS7003	Cam Lock
7	1	TS7000	Max. Speed 25 MPH
8	1	TS2003	Serial Number
9	1	TS2012	Single Pinch Point
10	2	TS2013	Dual Pinch Point
11	1	TS2017	Read Manual
12	1	P65 California	P65 Warning

1600 Gallon Pathfinder used to display decals. Decals are located in the same areas on other models of Pathfinder Trailers.

Minden Machine Shop Inc.
1302 K Road Minden, NE
308-832-0220

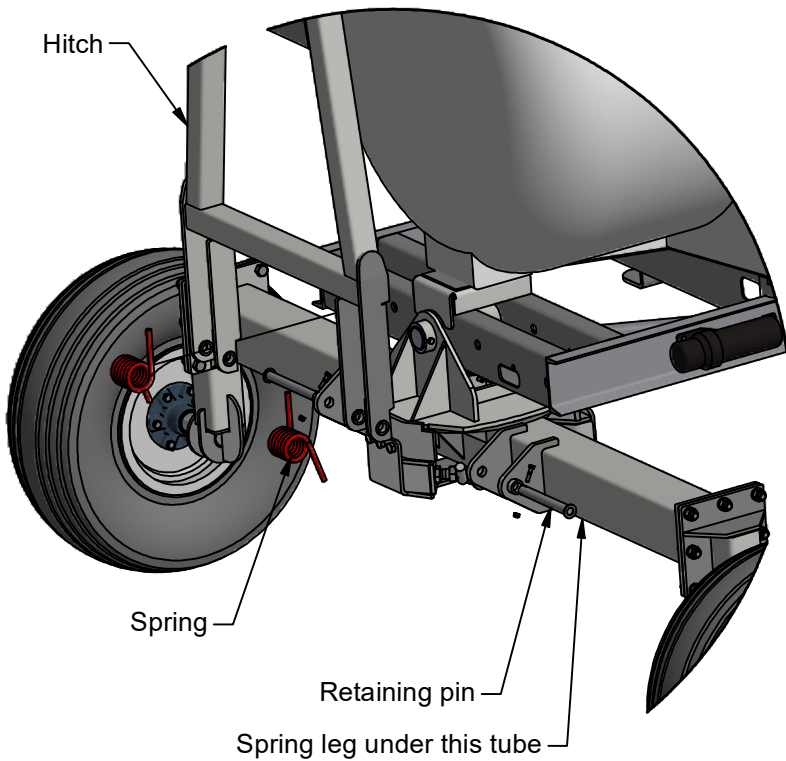


DETAIL C

C Retaining bolt and nut

To attach the front hitch to the Pathfinder Trailer, the hitch will have to be raised in the vertical position. Be sure to use a lifting source that is rated for the weight and have it properly secured so that it doesn't fall. The hitch has to be raised, so that the assist springs can be installed. The springs are installed with the spring legs below the axle tube and the other spring leg under the hitch. This will allow the spring to assist the user to raise the hitch when attaching to the tow implement. To attach the front hitch:

1. Using a rated lifting implement to raise the hitch vertically. Be sure it is connected correctly so the hitch will not fall.
2. Locate the attaching pins.
3. Align the hitch attaching holes to the axle attaching holes. Insert the pin into the first set of holes.
4. Insert the lift assist springs with one spring leg under the axle tube and the other spring leg under the hitch.
5. Insert the attaching pin through the center of the spring and into the other side of the hitch holes and the axle attaching holes.
6. Retain the pin with the 5/16" bolt and the 5/16" nylock nut. Tighten the nut on the bolt.
7. Repeat steps 3 through 6 for the other side.
8. Once both retaining pins are inserted and retained, lower the hitch to the ground.
9. The hitch should be assisted with the springs when lifted.
10. Remove the lifting implement when the hitch is lowered to the ground and the hitch is confirmed to be installed correctly.

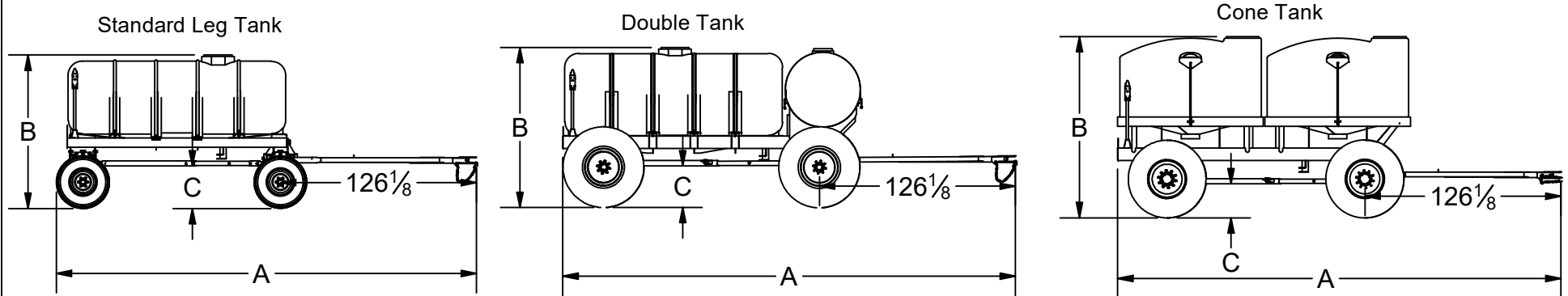


Front hitch weighs approximately 200 pounds

Minden Machine Shop Inc.
1302 K Road Minden, NE
308-832-0220

Machine Measurements

Pathfinder Dimensions



Pathfinder Dimensions								
Model	Style	Tank	Tire Size	Tire Height	Tire Width	Total Length (A)	Total Height (B)	Clearance (C)
1000S	Standard	1010 Gallons	12.5 x 15/8 Ply	32"	12"	275"	97"	27"
1000S	Standard	1010 Gallons	3.5 x 16.1/6 Ply	41"	13.5"	279"	101"	31"
1600S	Standard	1610 Gallons	17.5L x 24/8Ply	49"	17.5"	280"	102"	26"
1600S	Standard	1610 Gallons	320/85R38	60"	12.5"	285"	107"	31"
2000S	Standard	2000 Gallons	19.5L x 24/12Ply	52"	19"	281"	115"	27"
2000S	Standard	2000 Gallons	320/85R38	60"	12.5"	285"	119"	31"
2000D	Double	1610 Gallons 400 Gallons	19.5L x 24/12Ply	52"	19"	291"	103"	27"
2000D	Double	1610 Gallons 400 Gallons	320/85R38	60"	12.5"	295"	107"	31"
2040C	Cone	1020 Gallon 1020 Gallon	19.5L x 24/12Ply	52"	19"	285"	107"	27"
2040C	Cone	1020 Gallons 1020 Gallons	320/85R38	60"	12.5"	285"	111"	31"
2100D	Double	1610 Gallons 500 Gallons	19.5L x 24/12Ply	52"	19"	291"	103"	27"
2500D	Double	2000 Gallon 500 Gallon	19.5L x 24/12Ply	52"	19"	291"	113"	27"
2610S	Standard	2610 Gallon	19.5L x 24/12Ply	52"	19"	279"	126"	27"
2640C	Cone	1320 Gallon 1320 Gallon	19.5L x 24/12Ply	52"	19"	285"	118"	27"

Patriot Equipment
1302 K Road Minden, NE
308-832-0220

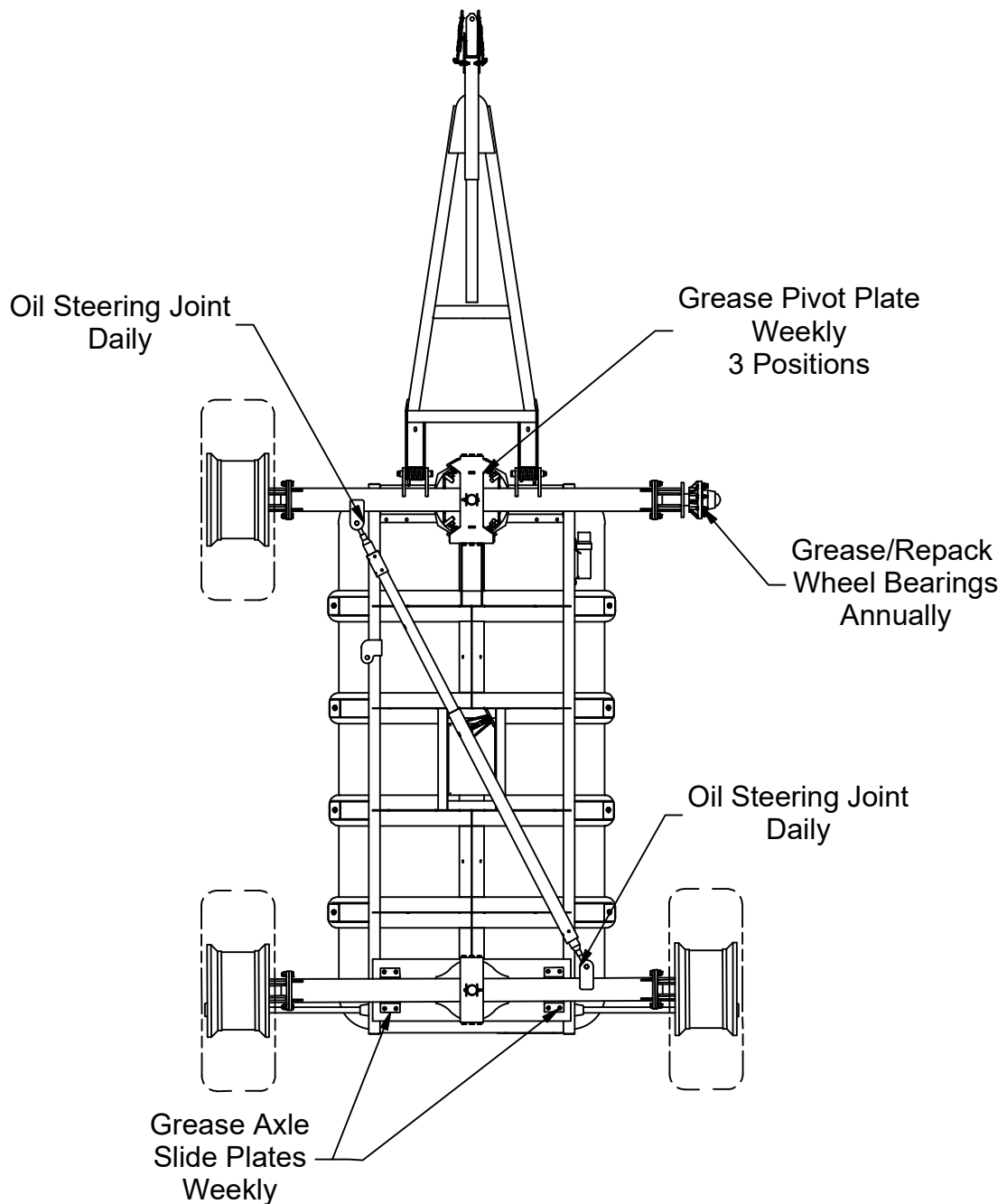
This drawing, and the information hereon, are the property of Minden Machine Shop Inc., and may be used only as authorized by us. Unpublished - All rights reserved under the copyright laws.

Lubrication and Maintenance



Warning!

For economical and efficient operation of your Patriot Pathfinder Trailer, maintain regular and correct lubrication. Neglect leads to reduced efficiency, excessive wear and needless down time.



Minden Machine Shop Inc.

1302 K Road Minden, NE

308-832-0220

Torque Data for Standard Nuts, Bolts, and Capscrews

Tighten all bolts to torques specified in chart unless otherwise noted. Check tightness of bolts periodically, using bolt chart as guide. Replace hardware with same grade bolt.

Note: Unless otherwise specified, high-strength Grade 5 hex bolts are used throughout assembly of equipment.

Bolt Torque for Standard Bolts

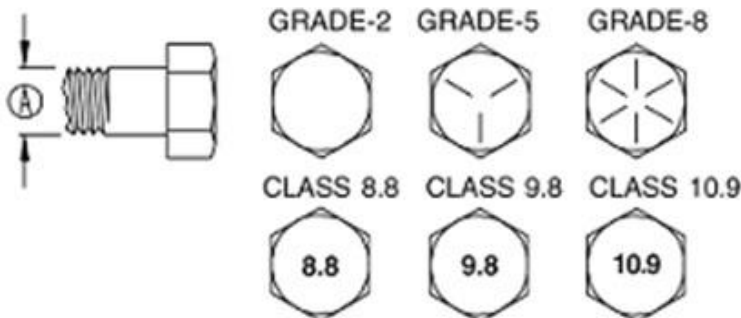
Bolt Size A	Grade 2		Grade 5		Grade 8	
	lb-ft	(N.m)	lb-ft	(N.m)	lb-ft	(N.m)
1/4"	6	8	9	12	12	16
5/16"	10	13	18	25	25	35
3/8"	20	27	30	40	45	60
7/16"	30	40	50	70	80	110
1/2"	45	60	75	100	115	155
9/16"	70	95	115	155	165	220
5/8"	95	130	150	200	225	300
3/4"	165	225	290	390	400	540
7/8"	170	230	420	570	650	880
1"	225	300	630	850	970	1310

Torque figures indicated are valid for non-greased or non-oiled threads and heads unless otherwise specified. Therefore, do not grease or oil bolts or capscrews unless otherwise specified in this manual. When using locking elements, increase torque values by 5%.

Bolt Torque for Metric Bolts

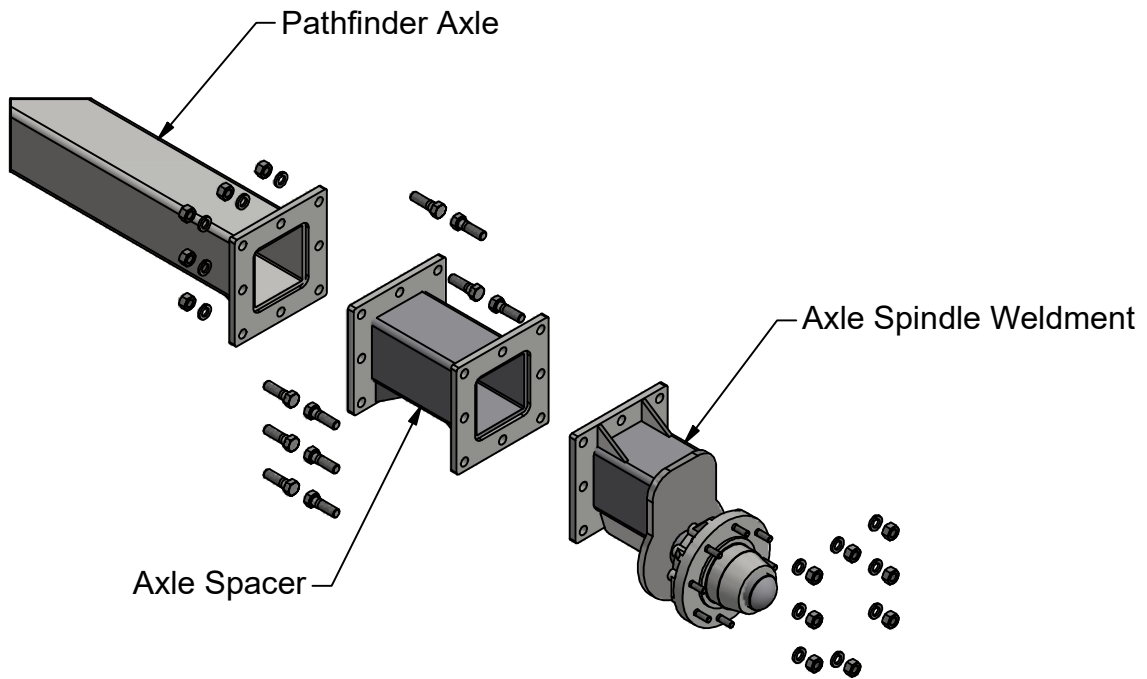
Bolt Size A	Class 8.8		Class 9.8		Class 10.9	
	lb-ft	(N.m)	lb-ft	(N.m)	lb-ft	(N.m)
6	9	13	10	14	13	17
7	15	21	18	24	21	29
8	23	31	25	34	31	42
10	45	61	50	68	61	83
12	78	106	88	118	106	144
14	125	169	140	189	170	230
16	194	263	216	293	263	357
18	268	363	364	493
20	378	513	515	689
22	516	699	702	952
24	654	886	890	1206

Grade or Class value for bolts and capscrews are identified by their head markings.



Parts Diagrams

Pathfinder Axle Spacer Kits



8 Bolt Spacers			
Part Number	Length	Row Spacing	Wheel Base
Standard Axle	No Spacer	30"	120"
PF-CP-A012	Narrow Tire Spacer		
PF-CP-A024	6"	22"	132" (11" offset)
PF-CP-A028	10"	20"	140"
PF-CP-A025	12"	36"	144"
PF-CP-A026	16"	38"	152"
PF-CP-A027	20"	40"	160"

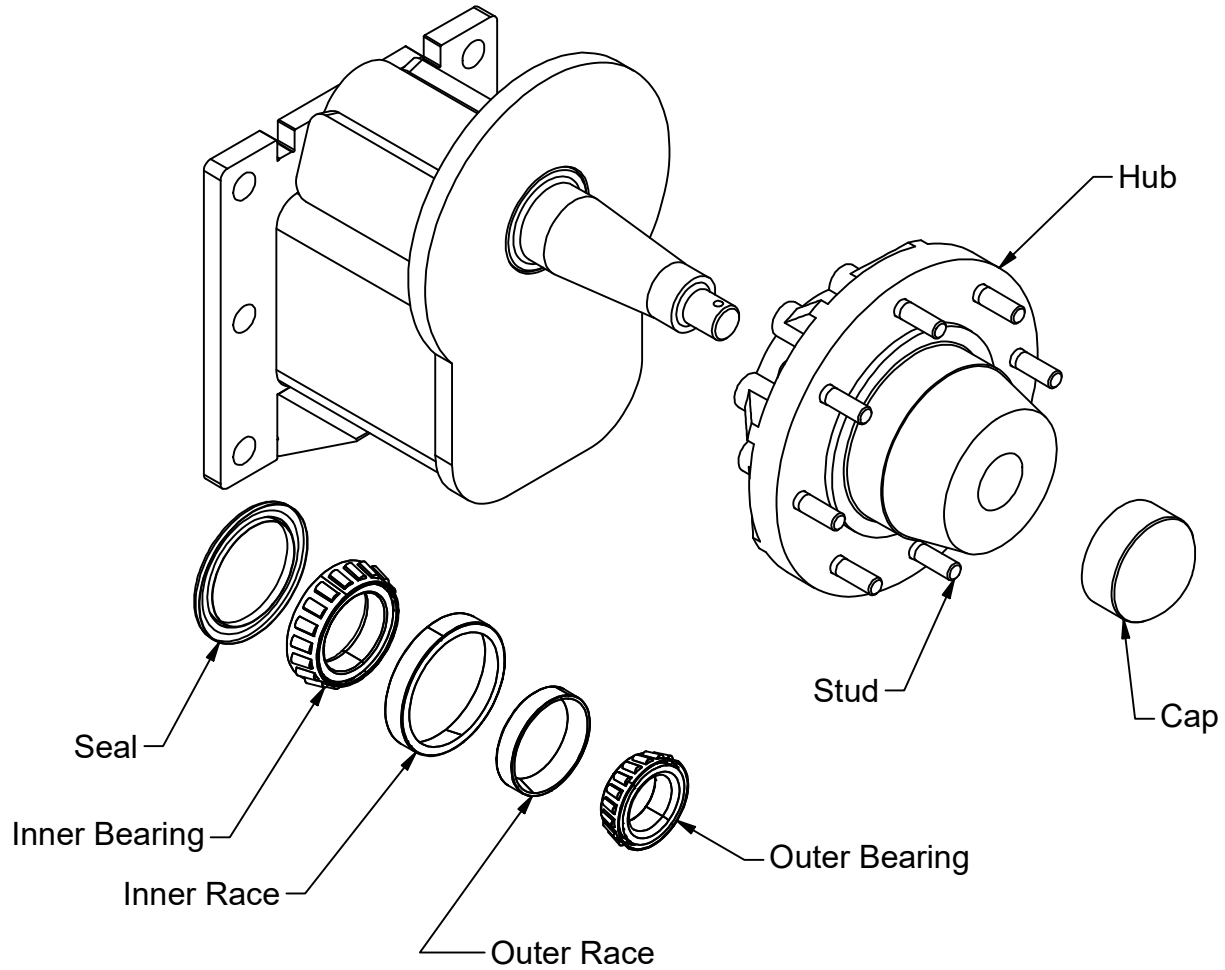
Fasteners - 8 Bolt Extensions		
Part Number	Quantity	Description
B3/4x2.5	64	3/4" Hex Bolt x 2-1/2"
W3/4L	64	3/4" Lock Washer
N3/4N	64	3/4" Nut

10 Bolt Spacer			
Part Number	Length	Row Spacing	Wheel Base
Standard Axle	No Spacer	30"	120"
PF-CP-A031	6"	22"	132" (11" Offset)
PF-CP-A032	10"	20"	140"
PF-CP-A033	12"	36"	144"
PF-CP-A034	16"	38"	152"
PF-CP-A035	20"	40"	160"

Fasteners - 10 Bolt Extensions		
Part Number	Quantity	Description
B3/4x2.5	80	3/4" Hex Bolt x 2-1/2"
W3/4L	80	3/4" Lock Washer
N3/4N	80	3/4" Nut

Minden Machine Shop Inc.
 1302 K Road Minden, NE
 308-832-0220

Pathfinder Hub and Spindle Parts



Pathfinder Hubs Parts List

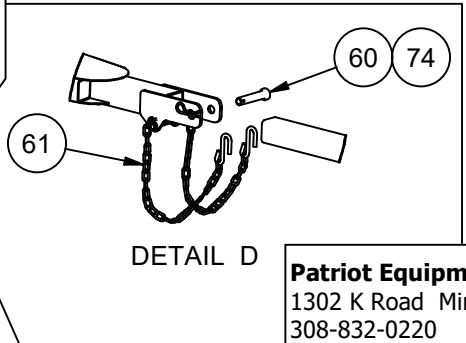
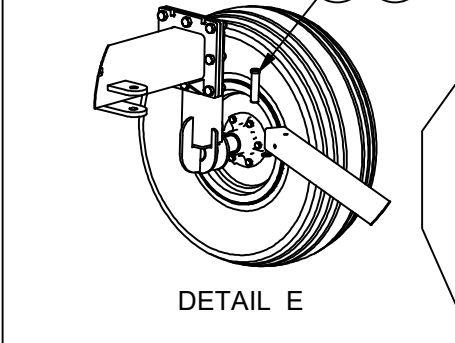
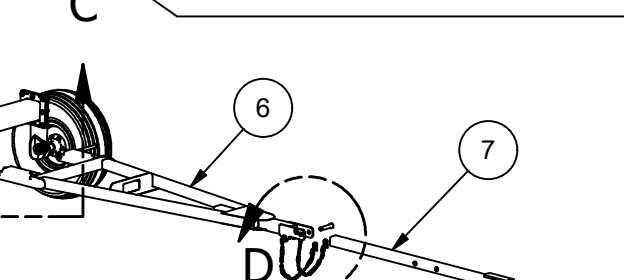
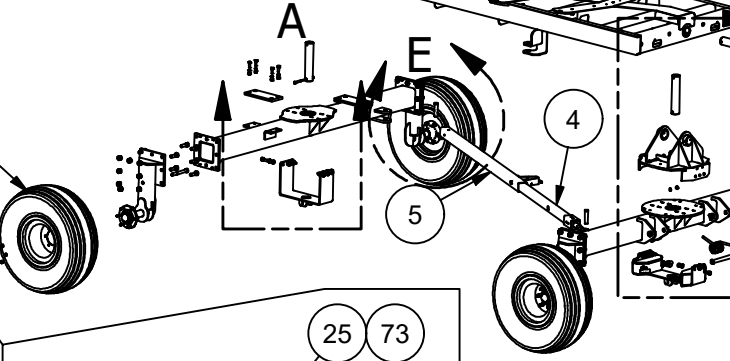
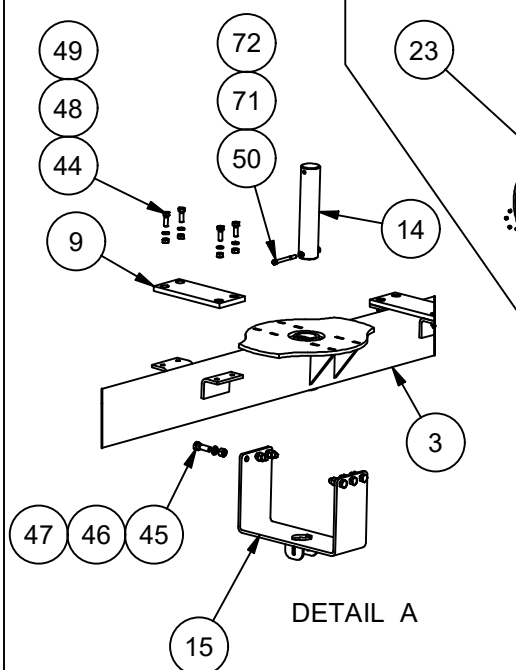
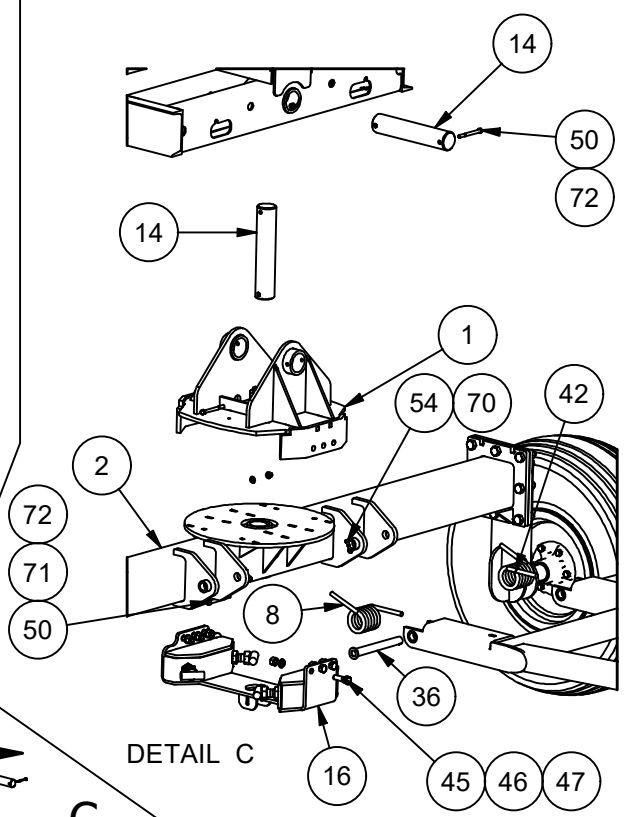
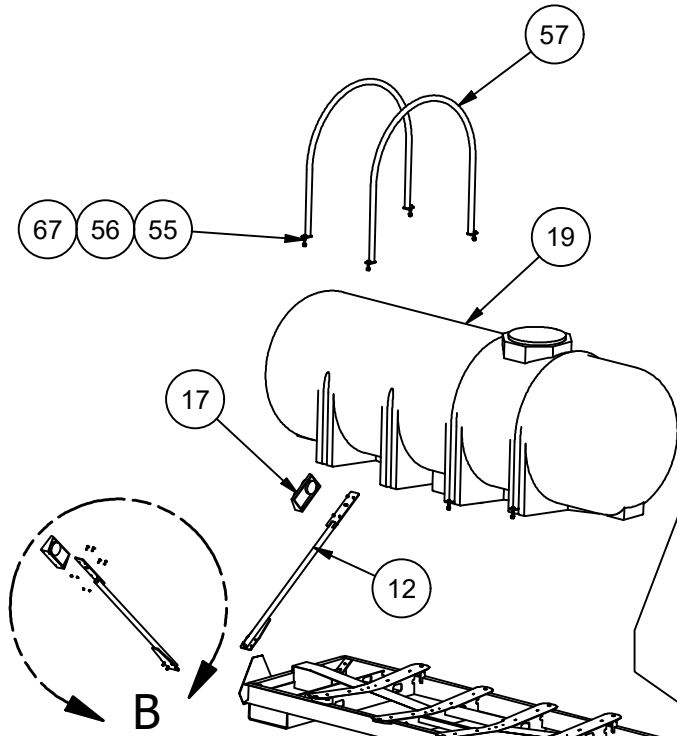
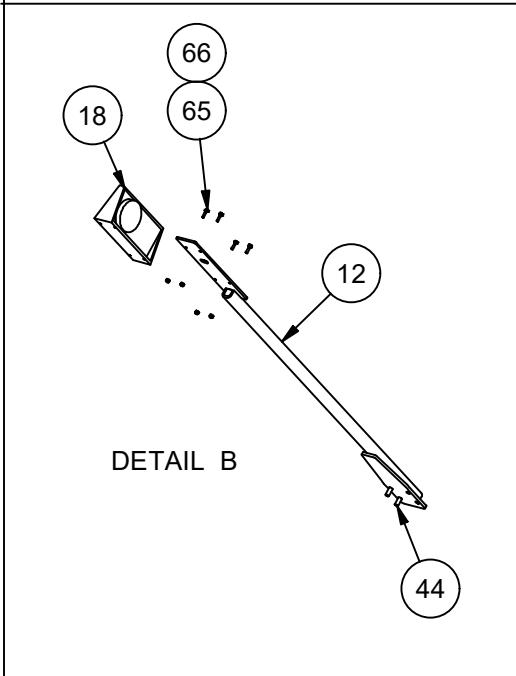
Model	Inner Race	Inner Bearing	Outer Race	Outer Bearing	Seal	Cap	Hub	Replacement Stud	Hub Nut
PFT-1000	SPD803-5 (25520)	SPD803-6 (25590)	SPD803-7 (25821)	SPD803-8 (25877)	SPD803-4 (906285)	SPD803-1 (909982)	N803	SPD803-3	SPD803-9
PFT-1600 PFT-2000	SPD875-6 (382A)	SPD875-7 (387AS)	SPD875-8 (LM501310)	SPD875-9 (LM501349)	SPD875-5 (946486)	SPD875-14 (909912)	SPD875-11 (N75-8)	SPD875-12	SPD875-13
PFT-2500 PFT-2610 PFT-2640	SPD871-2 (39520)	SPD871-3 (39585)	SPD871-4 (453A)	SPD871-5 (460)	SPD871-1 (906497)	SPD871-6 (909983)	N871		

Pathfinder Hub Stud Sizes

Hub	Stud Size
N803	9/16-18
N871	3/4-16
875	5/8-18

Minden Machine Shop Inc.
1302 K Road Minden, NE
800-264-6587 / 308-832-0220

PF-1000 Part List



Patriot Equipment
 1302 K Road Minden, NE
 308-832-0220

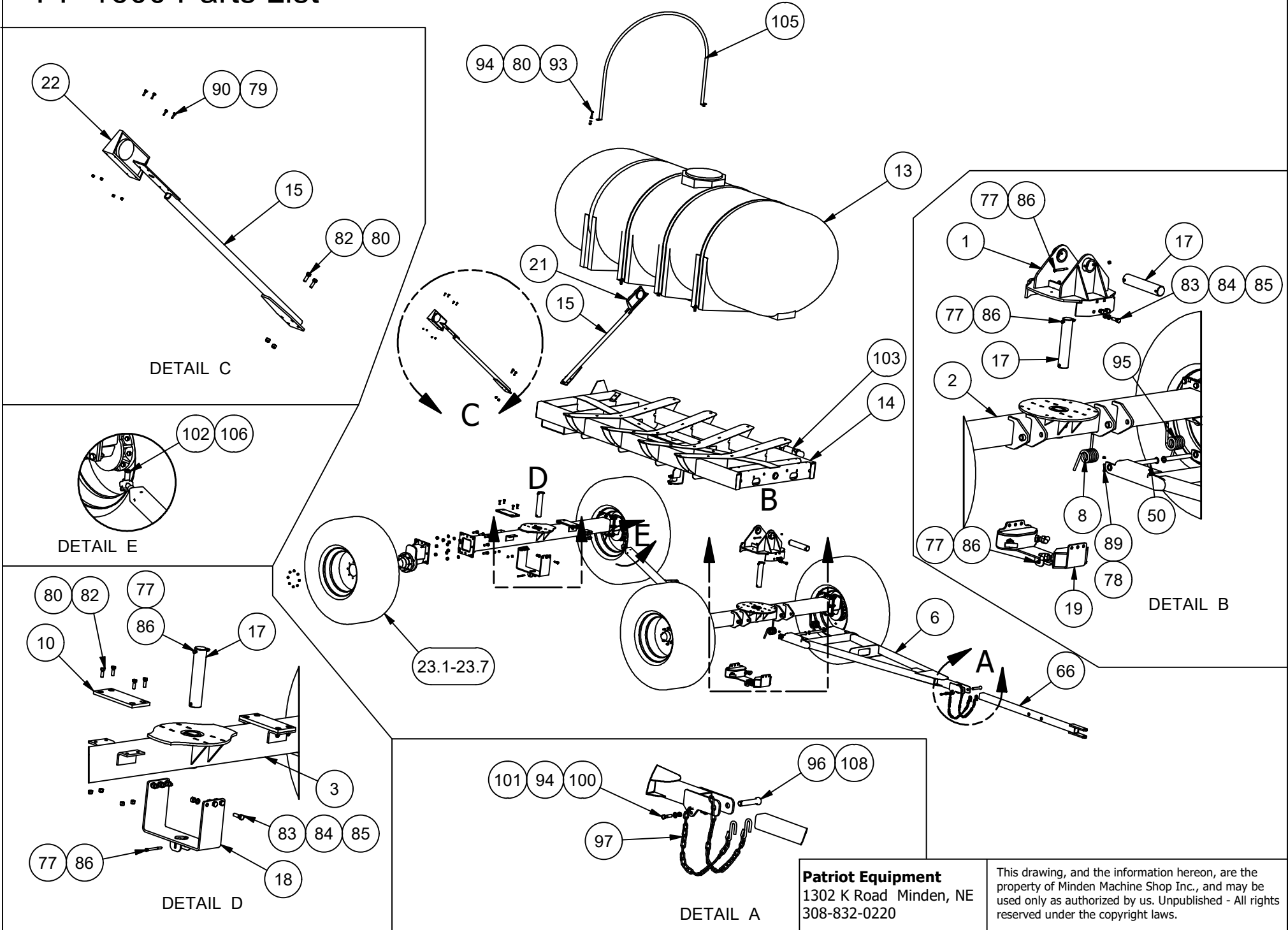
This drawing, and the information herein, are the property of Minden Machine Shop Inc., and may be used only as authorized by us. Unpublished - All rights reserved under the copyright laws.

Pathfinder Trailer 1000 Gallon				Pathfinder Trailer 1000 Gallon			
ITEM	QTY	PART NUMBER	DESCRIPTION	ITEM	QTY	PART NUMBER	DESCRIPTION
1	1	PF-CP-A007	Front Fifth Wheel Adjustable	51	32	N3/4N	Hex Nut "3/4" UNC
2	1	PF-CP-A001	6x6 Front Axle Weldment	52	32	W3/4L	Lock Washer
3	1	PF-CP-A002	6x6 Rear Axle Weldment	53	4	B3/4x6.5	Hex Bolt
4	1	PF-CP-A015	Front Tie Tube Weldment	54	2	B5/16x1.5	Hex Bolt
5	1	PF-CP-A016	Rear Tie Tube Weldment	55	8	B1/2x2.5	Hex Bolt
6	1	PF-CP-A021	Tongue Reciever Weldment 3 1-2	56	20	W1/2F	Plain Washer
7	1	PF-CP-A022	Tongue Extension 3 inch	57	2	T1000W-2	Long Tank Hoop
8	1	SP4003	Torsion Spring	58	2	T1000W-1	Short Tank Hoop
9	2	PFT4012	UHMW Axle Pad	59	24	N1/2NY	Nylock Nut
12	2	PF-CP-A014	Tail Light Bracket	60	1	PFT4010	1" x 5" Pin
14	3	PF-CP-P006	1 7_16 Pivot Pin	61	2	TR1595	Safety Chains
15	1	PF-CP-A005	Rear Pivot Support Weldment	63	2	B1/2x2.0	Hex Bolt
16	1	PF-CP-A008	Front Pivot Support Weldment	64	2	N1/2L	Lock Nut
17	1	PFT4007L	Light Flasher Left	65	8	B1/4x1.0	Hex Bolt
18	1	PFT4007R	Light Flasher Right	66	8	N1/4NY	Nylock Nut
19	1	T1000W	1000 White Tank	67	8	N1/2NY	Nylock Nut
19.1	1	T1000Y	1000 Yellow Tank	68	1	TR1590	Manual Holder
20	1	PF-1000-A002	1000 Gallon Main Frame	70	2	N5/16NY	Nylock Nut
21	4	PF-1000-A003	Axle Spindle Weldment	71	4	W3/8F	Flat Washer
22	4	PFT9133	White Rim 13.5x16.1 Tire	72	4	N3/8NYL	3/8 Std NC Nylock Nut
22.1	4	PFT9134	Yellow Rim 13.5x16.1 Tire	73	2	PNCP6667	3/16 "R" Clip
23	4	PFT9152	12.5x15 Yellow Rim and Tire	74	1	PNCP6667	1/4 X 4 "R" Clip
23.1	4	PFT9151	12.5x15 White Rim and Tire				
23.2	4	PFT9131	13.5x16.1 Yellow Rim and Tire				
23.3	4	PFT9132	13.5x16.1 White Rim and Tire				
25	2	PFT4011	Clevis Pin				
36	2	PF-CP-A020	Tongue Pin Weldment				
42	1	SP1060	Left Hand Torsion Spring				
43	28	B3/4x2.5	Hex Bolt				
44	12	B1/2x1.5	Hex Bolt				
45	12	B5/8x2.0	Hex Bolt				
46	12	N5/8N	Hex Nut "5/8" UNC				
47	12	W5/8L	Lock Washer				
48	8	W1/2L	Lock Washer				
49	8	N1/2N	Hex Nut "1/2" UNC				
50	6	B3/8x4.0	Hex Bolt				

Patriot Equipment
1302 K Road Minden, NE
308-832-0220

This drawing, and the information hereon, are the property of Minden Machine Shop Inc., and may be used only as authorized by us. Unpublished - All rights reserved under the copyright laws.

PF-1600 Parts List



Patriot Equipment
 1302 K Road Minden, NE
 308-832-0220

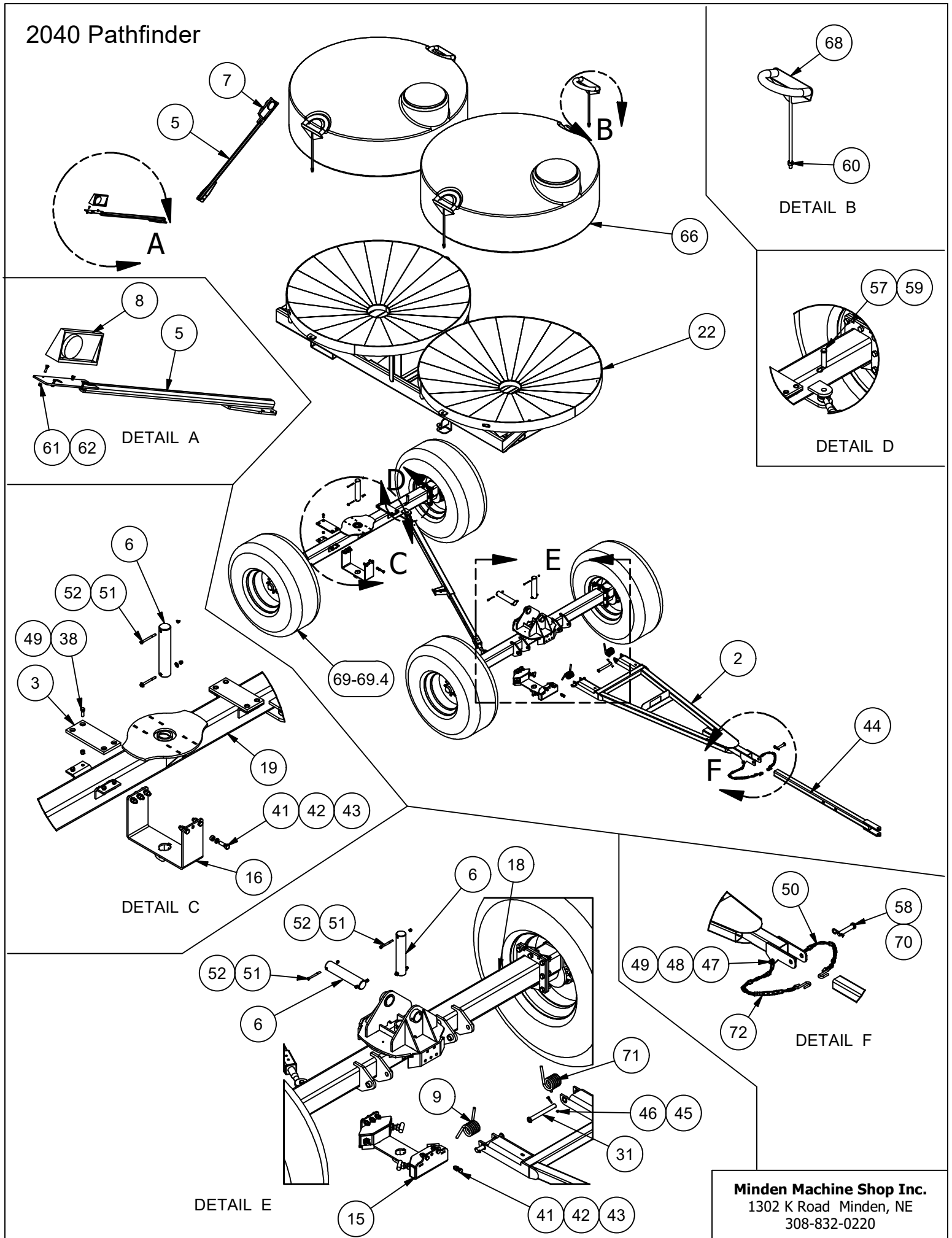
This drawing, and the information herein, are the property of Minden Machine Shop Inc., and may be used only as authorized by us. Unpublished - All rights reserved under the copyright laws.

Pathfinder Trailer 1600 Gallon				Pathfinder Trailer 1600 Gallon			
ITEM	QTY	PART NUMBER	DESCRIPTION	ITEM	QTY	PART NUMBER	DESCRIPTION
1	1	PF-CP-A007	Front Fifth Wheel Adjustable	81	28	B3/4x2.5	Hex Bolt
2	1	PF-CP-A001	6x6 Front Axle Weldment	82	12	B1/2x1.5	Hex Bolt
3	1	PF-CP-A002	6x6 Rear Axle Weldment	83	12	B5/8x2.0	Hex Bolt
4	1	PF-CP-A015	Front Tie Tube Weldment	84	12	W5/8L	Lock Washer
5	1	PF-CP-A016	Rear Tie Tube Weldment	85	12	N5/8N	Hex Nut "5/8" UNC
6	1	PF-CP-A021	Tongue Reciever Weldment	86	6	B3/8x4.0	Hex Bolt
8	1	SP4003	Right Hand Torsion Spring	87	28	W3/4L	Lock Washer
9	4	PF-CP-A011	Axle Spindle Weldment	88	28	N3/4N	Hex Nut "3/4" UNC
10	2	PFT4012	UHMW Axle Pad	89	2	B5/16x1.5	Hex Bolt
13	1	T1600W	1600 Gallon Tank White	90	8	B1/4x1.0	Hex Bolt
13.1	1	T1600Y	1600 Gallon Tank Yellow	93	4	B1/2x2.5	Hex Bolt
14	1	PF-1600-A001	1600 Gallon Main Frame	94	16	W1/2F	Plain Washer
15	2	PF-CP-A014	Tail Light Bracket	95	1	SP4003	Left Hand Torsion Spring
17	3	PF-CP-P006	1 7_16 Pivot Pin	96	1	PFT4010	1" x 5" Pin
18	1	PF-CP-A005	Rear Pivot Support Weldment	97	1	TR1595	Safety Chain
19	1	PF-CP-A008	Front Pivot Support Weldment	99	32	N1/2NYL	Nylock Nut
21	1	PFT4007L	Light Flasher Left	100	2	B1/2x2.0	Hex Bolt
22	1	PFT4007R	Light Flasher Right	101	2	N1/2L	Lock Nut
23.1	4	PFT9142	17.5x24 Tire Yellow Rim	102	3	PFT4011	1' x 4" Pin
23.2	1	PFT9143	Yellow Rim for 17.5x24 Tire	103	1	TR1590	Manual Holder
23.3	1	PFT9144	White Rim for 17.5x24 Tire	105	4	TR1610W-1	Hoop Assembly
23.4	4	PFT9121	380/85R38 Tire Yellow Rim	106	3	PNCP6666	3/16 "R" Clip
23.5	4	PFT9122	380/85R38 Tire White Rim	108	1	PNCP6667	1/4 X 4 "R" Clip
23.6	1	PFT9123	White Rim for 380/85R38 Tire				
23.7	1	PFT9124	Yellow Rim for 380/85R38 Tire				
50	2	PF-CP-A020	Tongue Pin Weldment				
66	1	PF-CP-A022	Tongue Extension 3 inch				
77	6	N3/8NYL	Nylock Nut				
78	2	N5/16NYL	Nylock Nut				
79	8	N1/4NYL	Nylock Nut				
80	16	N1/2NYL	Nylock Nut				

Patriot Equipment
1302 K Road Minden, NE
308-832-0220

This drawing, and the information hereon, are the property of Minden Machine Shop Inc., and may be used only as authorized by us. Unpublished - All rights reserved under the copyright laws.

2040 Pathfinder

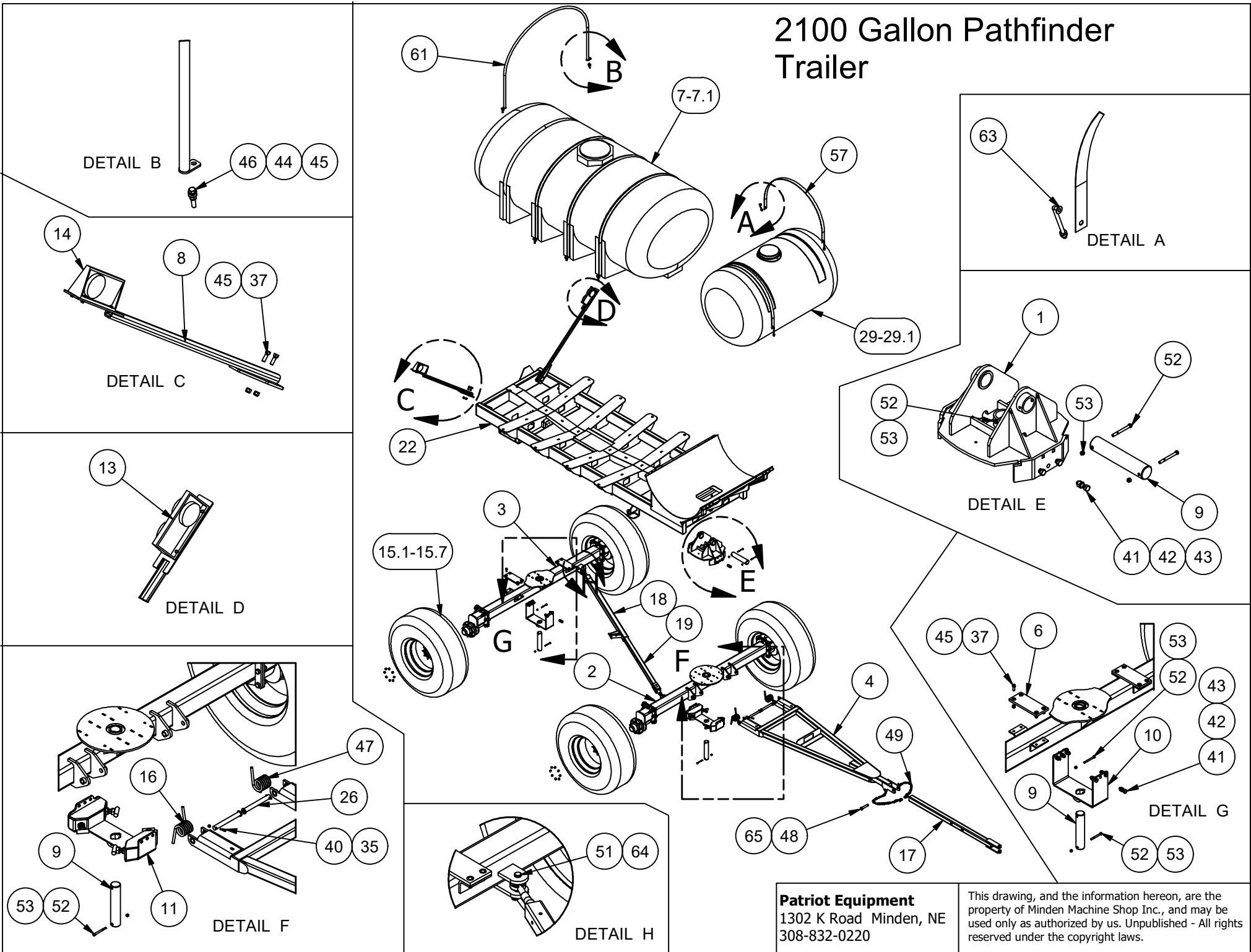


Minden Machine Shop Inc.
 1302 K Road Minden, NE
 308-832-0220

PF-2040 Parts List				PF-2040 Parts List			
ITEM	QTY	PART NUMBER	DESCRIPTION	ITEM	QTY	PART NUMBER	DESCRIPTION
1	1	PF-CP-A007	Front Fifth Wheel Adjustable	53	4	W3/8F	Plain Washer
				54	32	B3/4x2.5	Hex Bolt
2	1	PF-CP-A021	Tongue Reciever Weldment 3 1-2	55	32	W3/4L	Lock Washer
				56	32	N3/4N	Hex Nut "3/4" UNC
3	2	PFT4012	UHMW Axle Pad	57	2	PFT4011	Clevis Pins and Cotter Pins - Clevis Pin
5	2	PF-CP-A014	Tail Light Bracket Heavy Weldment				
6	3	PF-CP-P006	1 7_16 Pivot Pin	58	1	PFT4010	1" x 5" Long
7	1	PFT4007L	Light Flasher Left	59	2	PNCP6666	3/16 "R" Clip
8	1	PFT4007R	Light Flasher Right	60	4	N3/4NYL	3/4 Std NC Nylock Nut
9	1	SP4003	RIGHT HAND RAMP SPRING	61	8	N1/4NYL	1/4 Std NC Nylock Nut
				62	8	B1/4X1.0	Hex Bolt
11	1	PF-CP-A016	Rear Tie Tube Weldment	64	4	PF-CP-A011	Axle Spindle Weldment
12	1	PF-CP-A015	Front Tie Tube Weldment	66	2	T1020B	1020 Cone Tank Black
15	1	PF-CP-A008	Front Pivot Support Weldment	66.1	2	T1020W	1020 Cone Tank White
				68	4	Tie Down	With Tank
16	1	PF-CP-A005	Rear Pivot Support Weldment	69	4	PFT91101	19.5x24 Tire w/Yellow Rim
				69.1	4	PFT91102	19.5x24 Tire w/White Rim
				69.2	4	PFT91109	19.5x24 Tire Only
18	1	PF-CP-A001	6x6 Front Axle Weldment	69.3	4	PFT91107	19.5x24 White Rim 8 Bolt
19	1	PF-CP-A002	6x6 Rear Axle Weldment	69.4	4	PFT91108	19.5x24 Yellow Rim 8 Bolt
22	1	PF-2640-A002	Main Frame Weldment For 2640	70	1	PNCP6667	1/4 X 4 "R" Clip
				71	1	SP1060	LEFT HAND RAMP SPRING
31	2	PF-CP-A020	Tongue Pin Weldment				
38	12	B1/2x1.5	Hex Bolt				
41	12	N5/8N	Hex Nut "5/8" UNC				
42	12	B5/8x2.0	Hex Bolt				
43	12	W5/8L	Lock Washer				
44	1	PF-CP-A022	Tongue Extension 3 inch				
45	2	B5/16x1.5	Hex Bolt				
46	2	N5/16NYL	5/16 Std NC Nylock Nut				
47	2	B1/2x2.0	Hex Bolt				
48	2	W1/2F	Plain Washer				
49	53	N1/2NYL	1/2 Std NC Nylock Nut				
50	1	TR1595	SAFETY CHAIN				
51	6	B3/8x4.0	Hex Bolt				
52	6	N3/8NYL	3/8 Std NC Nylock Nut				

Minden Machine Shop Inc.
1302 K Road Minden, NE
308-832-0220

2100 Gallon Pathfinder Trailer



Patriot Equipment
 1302 K Road Minden, NE
 308-832-0220

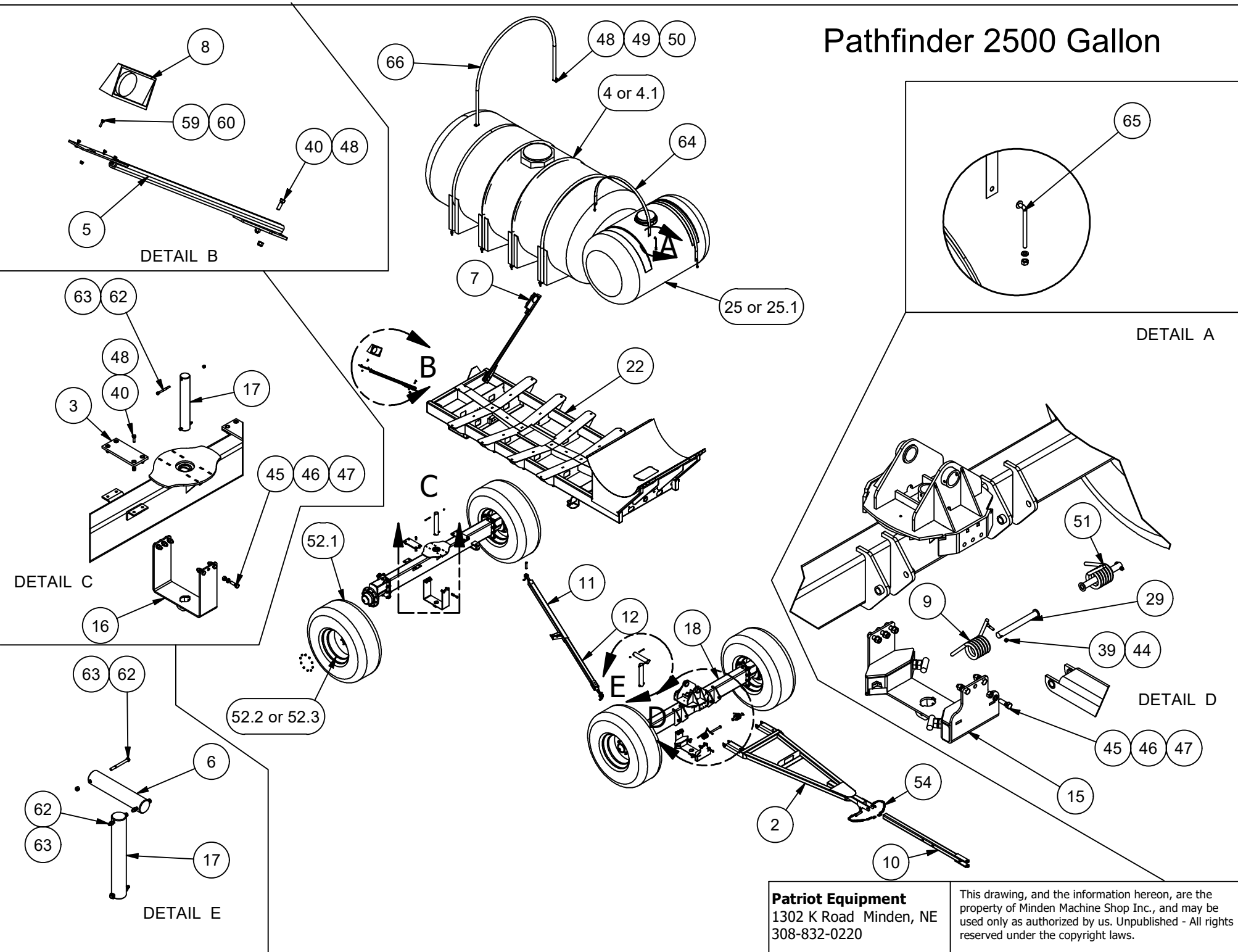
This drawing, and the information herein, are the property of Minden Machine Shop Inc., and may be used only as authorized by us. Unpublished - All rights reserved under the copyright laws.

2100 Pathfinder Trailer				2100 Pathfinder Trailer			
ITEM	QTY	PART NUMBER	DESCRIPTION	ITEM	QTY	PART NUMBER	DESCRIPTION
1	1	PF-CP-A007	Front Fifth Wheel Adjustable	41	12	B5/8x2.0	Hex Bolt
2	1	PF-CP-A001	6x6 Front Axle Weldment	42	12	N5/8N	Hex Nut "5/8" UNC
3	1	PF-CP-A002	6x6 Rear Axle Weldment	43	12	W5/8L	Lock Washer
4	1	PF-CP-A021	Tongue Reciever Weldment 3 1-2	44	20	W1/2F	Plain Washer
5	4	PF-CP-A011	Axle Spindle Weldment	45	20	N1/2NY	Nylock Nut
6	2	PFT4012	UHMW Axle Pad	46	10	B1/2x2.5	Hex Bolt
7	1	T1600W	1610 Ell. Leg Tank White	48	1	PFT4010	1" x 5" Pin
7.1	1	T1600Y	1610 Ell. Leg Tank Yellow	49	2	TR1595	Safety Chain
8	2	PF-CP-A014	Tail Light Bracket	51	2	PFT4011	1" x 4" Pin
9	3	PF-CP-P006	1-7/16 Pivot Pin	52	6	B3/8x4.0	Hex Bolt
10	1	PF-CP-A005	Rear Pivot Support Weldment	53	6	N3/8NY	Nylock Nut
11	1	PF-CP-A008	Front Pivot Support Weldment	54	8	B1/4x1.0	Hex Bolt
13	1	PFT4007L	Light Flasher Left	55	8	N1/4NY	Nylock Nut
14	1	PFT4007R	Light Flasher Right	56	32	N1/2N	Hex Nut
15.1	4	PFT91102	19.5x24 Tires and White Rims	57	2	PF-CP-P001	Tank Strap for 500 Gal. Tank
15.2	1	PFT91107	White Rim	58.1	4	W1/2L	Lock Washer
15.3	1	PFT91108	Yellow Rim	58.2	4	N1/2N	Hex Nut
15.4	1	PFT9121	380/85R38 Tire and Yellow Rim	59	1	TR1590	Manual Holder
15.5	1	PFT9122	380/85R38 Tire and White Rim	61	4	TR1610W-1	Tank Hoop
15.6	1	PFT9123	White Rim	63	4	ST100	1/2x6" J-Bolt w/ Lock Washer and Nut
15.7	1	PFT9124	Yellow Rim	64	2	PNCP6666	3/16" "R" Clip
16	2	SP4003	Torsion Spring	65	1	PNCP6667	1/4 X 4 "R" Clip
17	1	PF-CP-A022	Tongue Extension 3 inch				
18	1	PF-CP-A016	Rear Tie Tube Weldment				
19	1	PF-CP-A019	2x2 Tie Tube Weldment				
22	1	PF-2100-A001	2100 Gallon Pathfinder Main Frame				
26	2	PF-CP-A020	Tongue Pin Weldment				
29	1	T13	500 Gallon Tank White				
29.1	1	T13Y	500 Gallon Tank Yellow				
35	2	N5/16NY	Nylock Nut				
36	28	B3/4x2.5	Hex Bolt				
37	12	B1/2x1.5	Hex Bolt				
38	28	N3/4N	Hex Nut "3/4" UNC				
39	28	W3/4L	Lock Washer				
40	2	B5/16x1.5	Hex Bolt				

Patriot Equipment
1302 K Road Minden, NE
308-832-0220

This drawing, and the information hereon, are the property of Minden Machine Shop Inc., and may be used only as authorized by us. Unpublished - All rights reserved under the copyright laws.

Pathfinder 2500 Gallon



Patriot Equipment
 1302 K Road Minden, NE
 308-832-0220

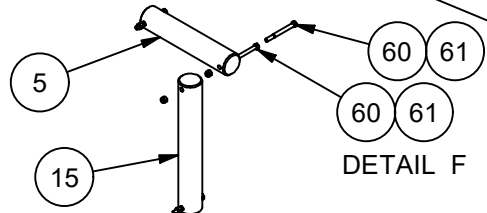
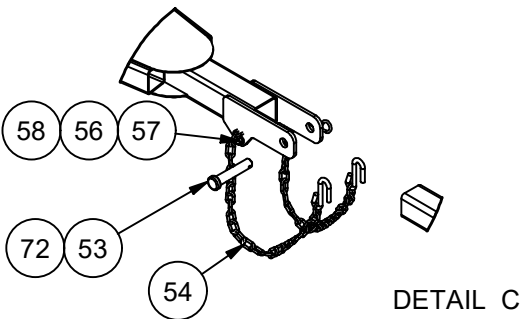
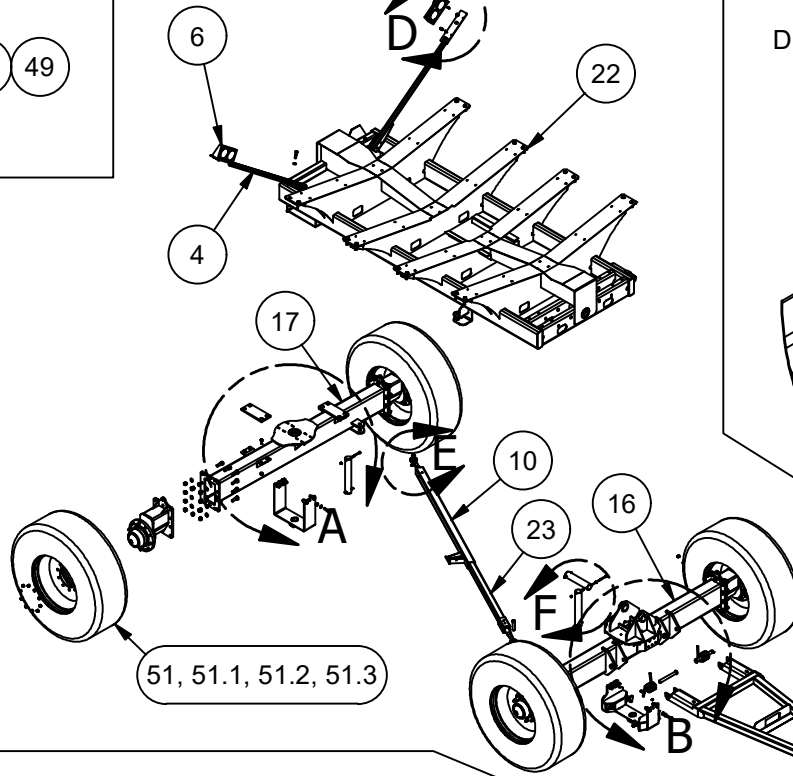
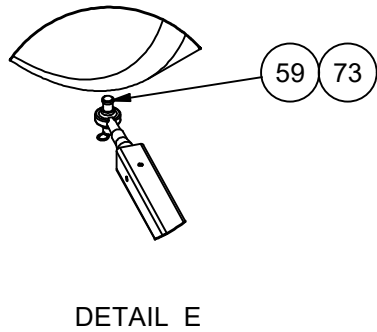
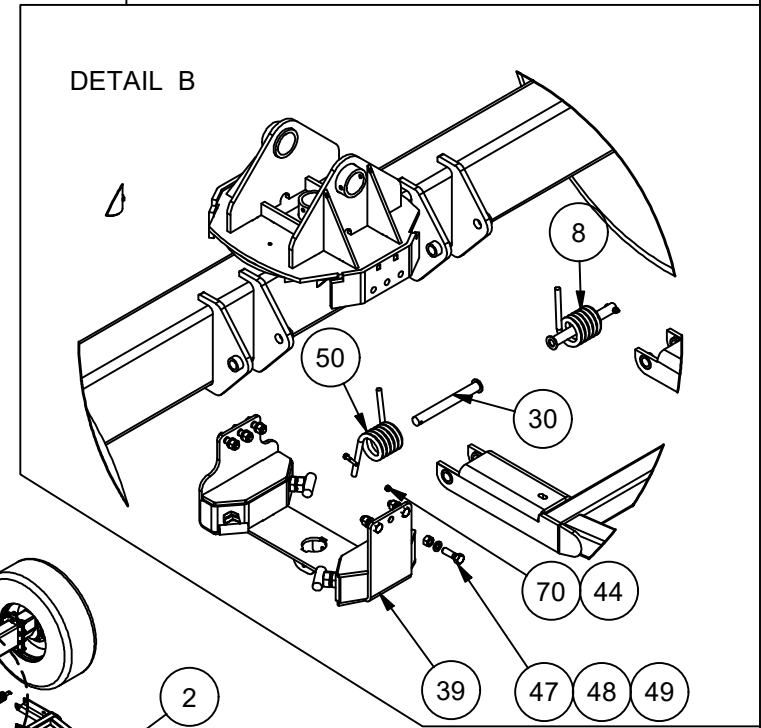
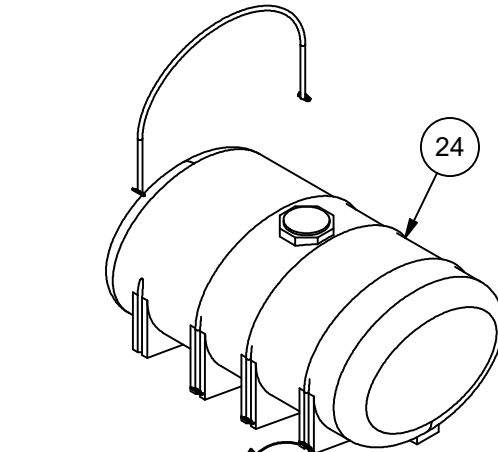
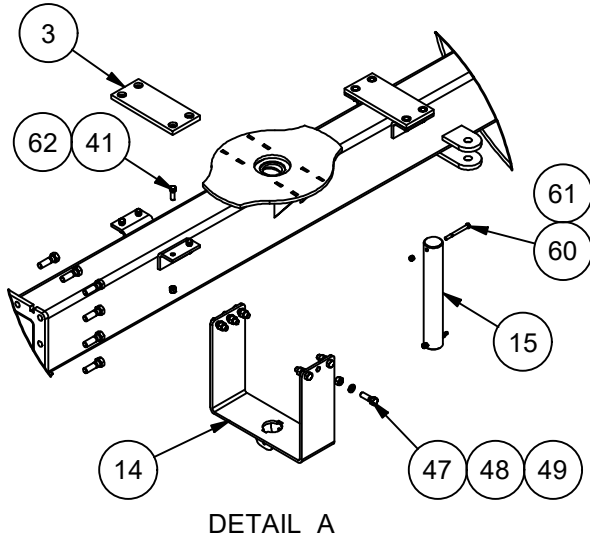
This drawing, and the information herein, are the property of Minden Machine Shop Inc., and may be used only as authorized by us. Unpublished - All rights reserved under the copyright laws.

2500 Gallon Pathfinder				2500 Gallon Pathfinder			
ITEM	QTY	PART NUMBER	DESCRIPTION	ITEM	QTY	PART NUMBER	DESCRIPTION
1	1	PF-CP-A007	Front Fifth Wheel Adjustable	51	1	SP1060	LEFT HAND RAMP SPRING
2	1	PF-CP-A021	Tongue Reciever 3 1-2	52.1	4	PFT91104	19.5x24 Tire White Rim
3	2	PFT4012	Axle Pad	52.2	1	PFT91105	White Rim
4	1	T2010Y	2010 Gal. El. Leg Tank Yellow	52.3	1	PFT91106	Yellow Rim
4.1	1	T2010W	2010 Gal. El. Leg Tank White	53	1	PFT4010	1" x 5" Pin
5	2	PF-CP-A014	Tail Light Bracket Heavy	54	2	TR1595	Safety Chain
6	1	PF-CP-P006	1 7_16 Pivot Pin	56	2	B1/2x2.0	Hex Bolt
7	1	PFT4007L	Light Flasher Left	57	2	N1/2L	Lock Nut
8	1	PFT4007R	Light Flasher Right	58	2	PFT4011	1"x4" Pin
9	2	SP4003	Torsion Spirng	59	8	B1/4x1.0	Hex Bolt
10	1	PF-CP-A022	Tongue Extension 3 inch	60	8	N1/4NY	Nylock Nut
11	1	PF-CP-A016	Rear Tie Tube Weldment	61	40	N1/2NY	Nylock Nut
12	1	PF-CP-A019	2x2 Tie Tube Weldment	62	6	B3/8x4.0	Hex Bolt
15	1	PF-CP-A009	6x10 Front Pivot Support	63	6	N3/8NY	Nylock Nut
16	1	PF-CP-A006	6x10 Rear Pivot Support	64	2	PF-CP-P001	Tank Strap for 500 Gal. Tank
17	2	PF-CP-P015	1 7_16 Pivot Pin 6x10	65	4	ST100	J-Bolt with Nut and Washer
18	1	PF-CP-A003	6x10 Front Axle Weldment	65.1	4	W1/2L	Lock Washer
19	1	PF-CP-A004	6x10 Rear Axle Weldment	65.2	4	N1/2N	Hex Nut
20	4	PF-CP-A013	Axle Spindle Weldment 6x10	66	4	With Tank	Tank Hoop
22	1	PF-2500-A001	2500 Gal. PF Main Frame	67	1	TR1590	Manual Holder
25	1	T13	500 Gal. Tank White	69	2	PNCP6666	3/16" "R" Clip
25.1	1	T13Y	500 Gal. Tank Yellow	70	1	PNCP6667	1/4 X 4 "R" Clip
29	2	PF-CP-A020	Tongue Pin Weldment	71	2	W3/8F	Plain Washer
39	2	N5/16NY	Nylock Nut				
40	12	B1/2x1.5	Hex Bolt				
41	40	B3/4x2.5	Hex Bolt				
42	40	W3/4L	Lock Washer				
43	40	N3/4N	Hex Nut "3/4" UNC				
44	2	B5/16x1.5	Hex Bolt				
45	12	B5/8x2.0	Hex Bolt				
46	12	W5/8L	Lock Washer				
47	12	N5/8N	Hex Nut "5/8" UNC				
48	20	N1/2NY	Nylock Nut				
49	8	B1/2x2.5	Hex Bolt				
50	22	W1/2F	Plain Washer				

Patriot Equipment
1302 K Road Minden, NE
308-832-0220

This drawing, and the information hereon, are the property of Minden Machine Shop Inc., and may be used only as authorized by us. Unpublished - All rights reserved under the copyright laws.

Pathfinder 2610



Patriot Equipment
 1302 K Road Minden, NE
 308-832-0220

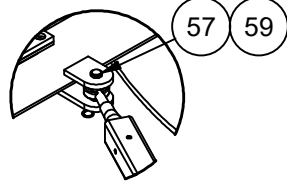
This drawing, and the information herein, are the property of Minden Machine Shop Inc., and may be used only as authorized by us. Unpublished - All rights reserved under the copyright laws.

Pathfinder 2610				Pathfinder 2610			
ITEM	QTY	PART NUMBER	DESCRIPTION	ITEM	QTY	PART NUMBER	DESCRIPTION
1	1	PF-CP-A007	Front Fifth Wheel Adjustable	51	4	PFT91103	19.5x24 Tire Yellow Rim
2	1	PF-CP-A021	Tongue Reciever 3 1-2	51.1	4	PFT91104	19.5x24 Tire White Rim
3	2	PFT4012	Axle Pad	51.2	1	PFT91105	White Rim
4	2	PF-CP-A014	Tail Light Bracket	51.3	1	PFT91106	Yellow Rim
5	1	PF-CP-P006	1 7_16 Pivot Pin	52	1	PF-CP-A022	Tongue Extension 3 inch
6	1	PFT4007L	Light Flasher Left	53	1	PFT4010	1" x 5" Pin
7	1	PFT4007R	Light Flasher Right	54	1	TR1595	Safety Chain
8	2	SP4003	Torsion Spring	56	36	W1/2F	Plain Washer
10	1	PF-CP-A016	2.5x2.5 Tie Tube	57	2	B1/2x2.0	Hex Bolt
14	1	PF-CP-A006	6x10 Rear Pivot Support	58	2	N1/2L	Lock Nut
15	2	PF-CP-P015	1 7_16 Pivot Pin 6x10	59	2	PFT4011	1"x4" Pin
16	1	PF-CP-A003	6x10 Front Axle Weldment	60	6	B3/8x4.0	Hex Bolt
17	1	PF-CP-A004	6x10 Rear Axle Weldment	61	6	N3/8NY	Nylock Nut
18	4	PF-CP-A013	Axle Spindle Weldment 6x10	62	28	N1/2NY	Nylock Nut
22	1	PF-2610-P001	2610 Gal. PF Main Frame	63	8	B1/4x1.0	Hex Bolt
23	1	PF-CP-A015	Front Tie Tube Weldment	64	8	N1/4NY	1/4 Std NC Nylock Nut
24	1	T2610Y	2610 El. D.L.T Yellow	65	16	B1/2x2.5	Hex Bolt
24.1	1	T2610W	2610 El.D.L.T White	66	1	TR1590	Manual Holder
30	2	PF-CP-A020	Tongue Pin Weldment	68	2	With Tank	2610 Short Band
39	1	PF-CP-A009	6x10 Front Pivot Support	69	2	With Tank	2610 Long Band
40	40	B3/4x2.5	Hex Bolt	70	2	N5/16NY	Nylock Nut
41	12	B1/2x1.5	Hex Bolt	71	40	N1/2NY	Nylock Nut
42	40	W3/4L	Lock Washer	72	1	PNCP6667	1/4 X 4 "R" Clip
43	40	N3/4N	Hex Nut "3/4" UNC	73	2	PNCP6666	3/16 "R" Clip
44	2	B5/16x1.5	Hex Bolt				
47	12	B5/8x2.0	Hex Bolt				
48	12	N5/8N	Hex Nut "5/8" UNC				
49	12	W5/8L	Lock Washer				
50	1	SP4003	RIGHT HAND RAMP SPRING				

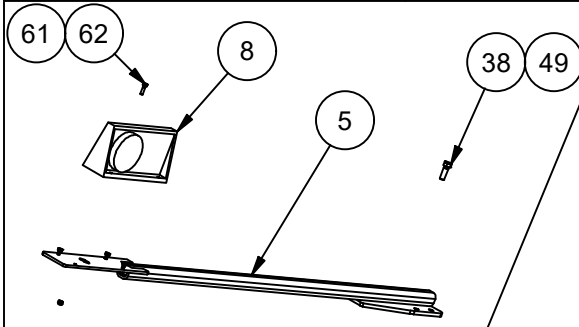
Patriot Equipment
1302 K Road Minden, NE
308-832-0220

This drawing, and the information hereon, are the property of Minden Machine Shop Inc., and may be used only as authorized by us. Unpublished - All rights reserved under the copyright laws.

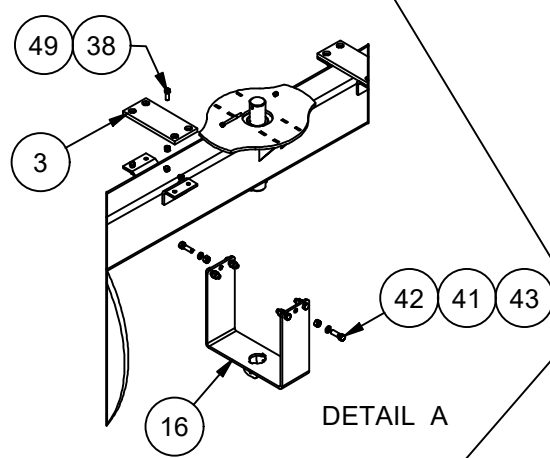
Pathfinder 2640



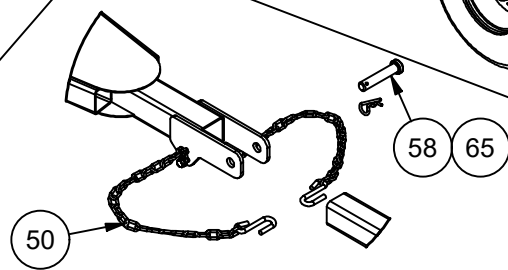
DETAIL C



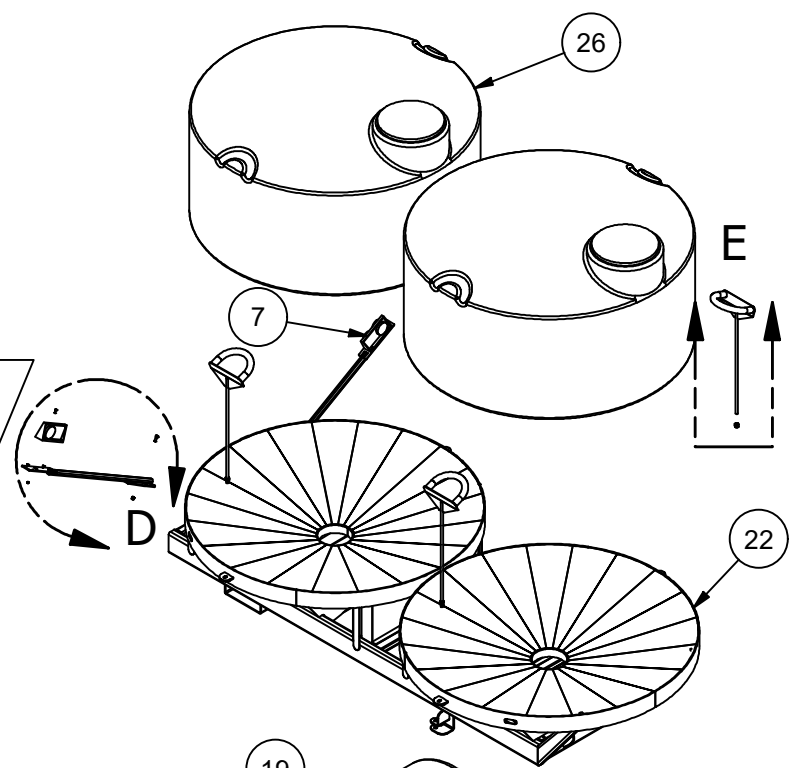
DETAIL D



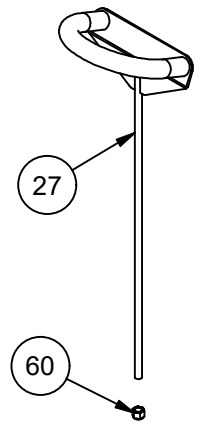
DETAIL A



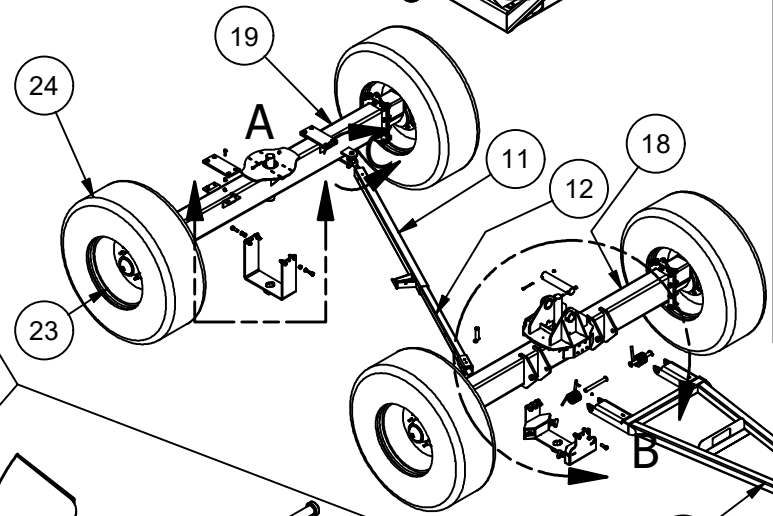
DETAIL F



E



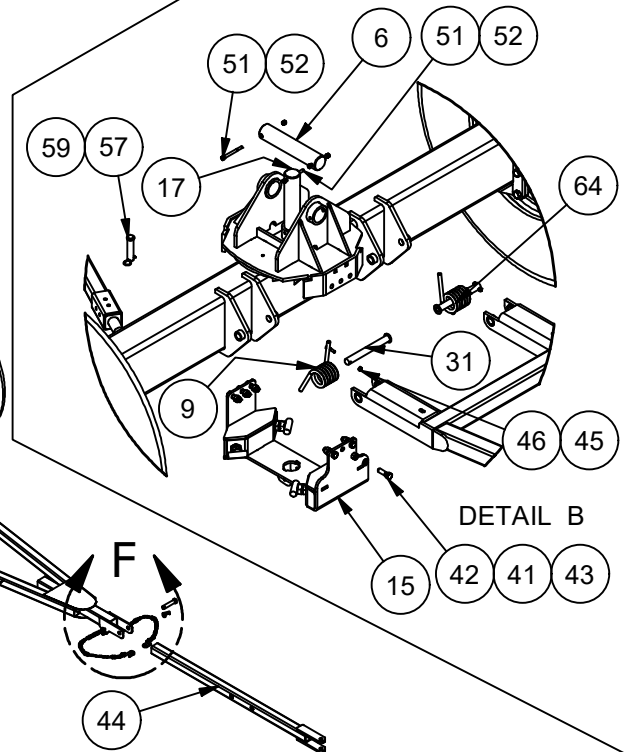
DETAIL E



A

B

F



DETAIL B

Patriot Equipment
1302 K Road Minden, NE
308-832-0220

This drawing, and the information hereon, are the property of Minden Machine Shop Inc., and may be used only as authorized by us. Unpublished - All rights reserved under the copyright laws.

Pathfinder 2640				Pathfinder 2640			
ITEM	QTY	PART NUMBER	DESCRIPTION	ITEM	QTY	PART NUMBER	DESCRIPTION
1	1	PF-CP-A007	Front Fifth Wheel Adjustable	46	2	N5/16NY	Nylock Nut
2	1	PF-CP-A021	Tongue Reciever 3 1-2	47	2	B1/2x2.0	Hex Bolt
3	2	PFT4012	Axle Pad	48	2	W1/2F	Plain Washer
5	2	PF-CP-A014	Tail Light Bracket	49	14	N1/2NY	1/2 Std NC Nylock Nut
6	1	PF-CP-P006	1 7_16 Pivot Pin	50	2	TR1595	Safety Chain
7	1	PFT4007L	Light Flasher Left	51	6	B3/8x4.0	Hex Bolt
8	1	PFT4007R	Light Flasher Right	52	6	N3/8NY	Nylock Nut
9	1	SP4003	Torsion Spring	53	4	W3/8F	Plain Washer
11	1	PF-CP-A016	2.5x2.5 Tie Tube	54	40	B3/4x2.5	Hex Bolt
12	1	PF-CP-A015	2x2 Tie Tube	55	40	W3/4L	Lock Washer
15	1	PF-CP-A009	6x10 Front Pivot Support	56	40	N3/4N	Hex Nut "3/4" UNC
16	1	PF-CP-A006	6x10 Rear Pivot Support	57	2	PFT4011	1"x4" Pin
17	2	PF-CP-P015	1 7_16 Pivot Pin 6x10	58	1	PFT4010	1" x 5" Pin
18	1	PF-CP-A003	6x10 Front Axle Weldment	59	2	PNCP6666	3/16 "R" Clip
19	1	PF-CP-A004	6x10 Rear Axle Weldment	60	4	N3/4NY	Nylock Nut
20	4	PF-CP-A013	Axle Spindle 6x10	61	8	N1/4NY	Nylock Nut
22	1	PF-2640-A002	Main Frame For 2640	62	8	B1/4x1	Hex Bolt
23	4	PFT91103	19.5x24 Tire Yellow Rim	63	13	N1/2NY	Nylock Nut
23.1	4	PFT91104	19.5x24 Tire White Rim	64	1	SP1060	LEFT HAND RAMP SPRING
23.2	1	PFT91105	White Rim	65	1	PNCP6667	1/4 X 4 "R" Clip
23.3	1	PFT91106	Yellow Rim				
26	2	T1320B	1320 Gal. Cone Tank				
27	4	Tie Down	Supplied with Tank				
31	2	PF-CP-A020	Tongue Pin Weldment				
38	12	B1/2x1.5	Hex Bolt				
41	12	N5/8N	Hex Nut "5/8" UNC				
42	12	B5/8x2.0	Hex Bolt				
43	12	W5/8L	Lock Washer				
44	1	PF-CP-A022	Tongue Extension 3 inch				
45	2	B5/16x1.5	Hex Bolt				

Patriot Equipment
1302 K Road Minden, NE
308-832-0220

This drawing, and the information hereon, are the property of Minden Machine Shop Inc., and may be used only as authorized by us. Unpublished - All rights reserved under the copyright laws.

Minden Machine Shop Inc

LIMITED WARRANTY

Minden Machine Shop Inc warrants all products manufactured by it to be free of defect in material and workmanship for a period of one (1) year from the date of purchase.

This Minden Machine Shop Inc. warranty does not cover:

1. Parts and accessories supplied by Minden Machine Shop Inc. but manufactured by others. Minden Machine Shop Inc. will facilitate the other manufacturer warranty for the benefit of the purchaser but will not be bound thereby (example: augers, motors, trailers, tanks, etc.).
2. Products that have been altered by anyone other than a Minden Machine Shop Inc. employee or are used by the purchaser, for purposes other than what was intended at time of manufacture or used in excess of the “built specifications”.
3. Products that are custom manufactured by Minden Machine Shop Inc. utilizing the purchaser’s design which deviates from Minden Machine Shop Inc. normal production line manufactured or customized features of the products.
4. Malfunctions or damages to the product from misuse, negligence, customer alteration, accidents or product abuse due to incoming material or poor material flow ability or lack of required performance or required maintenance (e.g., poor material flow ability caused by incoming wet fertilizer or hot soybean meal, etc).
5. Loss of time, inconvenience, loss of material, down time or any other consequential damage.
6. Product use for a function that is different than designed intent (e.g., storing soybean meal in grain bin, unacceptable material in the bin such as hot bean meal when product originally designed for other application, etc).
7. Minden Machine Shop Inc is not responsible for any equipment that this product is attached to or mounted on.

To activate this warranty, the purchaser must make contact in writing with Minden Machine Shop Inc. within one (1) year of date of purchase. After contact, Minden Machine Shop Inc. has the right to determine the cause and qualify the legitimacy of the claim. Minden Machine Shop Inc., upon acceptance of a warranty claim, shall have a reasonable time to plan any repair or replacement and may affect repair or replacement out of its factory or through contract with a local repair service. If a purchaser after warranty notice is made, chooses to make the repair itself, Minden Machine Shop Inc. must approve any expenses before they are incurred to be responsible for customer reimbursement. Minden Machine Shop Inc. shall be liable on a warranty claim for repair or replacement of any defective products and this is the purchaser’s sole and exclusive remedy. Minden Machine Shop Inc. will not be liable for any other or further remedy including claims for personal injury, property damage or consequential damage. The law of the State of Nebraska shall govern and any such claim and any issues with regard to the same shall be resolved in the Nebraska District Court for the county of Kearney.

RETURN OF MERCHANDISE

Merchandise may not be returned without written approval from the factory. All returns must have a return authorization number. Obtain this number before the return and show it on all return items. A 15% restocking charge is made on merchandise returned. Returned merchandise must be shipped pre-paid.

RECEIVING MERCHANDISE AND FILING CLAIMS

When receiving merchandise it is important to check both the number of parts and their description with packing slip. The consignee must make all claims for freight damage or shortage within 10 days from the date of delivery.

When the material leaves the factory it becomes the property of the consignee. It is the responsibility of the consignee to file a claim on any possible damage or loss. Please list your preferred routing on purchase orders.

MODIFICATIONS

It is the policy of Minden Machine Shop Inc. to improve its products whenever possible and practical to do so. We reserve the right to make changes, improvements and modifications at any time without incurring the obligation to make such changes, improvements and modifications on any equipment sold previously.

WARRANTY REGISTRATION

To register equipment, or file a claim, copy and paste the words on this page into an email or word document, fill out the appropriate information completely, and email it to larry@mindenmachine.com with the subject as EQUIPMENT WARRANTY, or fill it out and fax it to 308-832-1340.

Dealer Information: Not Applicable, check here: []

Dealer Name:
 Address:
 City:
 State:
 Zip Code:
 Phone #:
 Email:

End User Information:

Purchaser:
 Address:
 City:
 State:
 Zip Code:
 Phone #:
 Email:

Equipment:
 Serial #:
 Date Of Purchase: / /

Equipment:
 Trailer Model Number:
 Trailer VIN Number:
 Date Of Purchase: / /
 Dealer Name:

TIRE IDENTIFICATION NUMBERS

QTY	1	2	3	4	5	6	7	8	9	10	11	12
1												
2												
3												
4												
5												
6												
7												
8												

Please return within 14 days of purchase

CLAIM FILE

Defect: